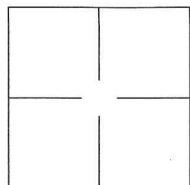


CORNER RECORD

Agency Index DPW# 18-070Document Number APN 006-052-23 ADJCity of SAN ANSELMOCounty of MARIN, CaliforniaBrief Legal Description MONUMENT ON MADRONE AVENUE.

CORNER TYPE

Government Corner ☐ Control ☐
Meander ☐ Property ☐
Rancho ☐ Other ☒

Date of Survey 2018-08-16

COORDINATES (Optional)

N. _____ E. _____

Elevation _____

Units Metric ☐ U.S. Survey Foot ☐

Horizontal Datum _____

Zone _____ Epoch Date _____

Vertical Datum: _____

☐ Complies with Public Resources Code §§8801-8819☐ Complies with Public Resources Code §§8890-8902PLS Act Ref.: ☐ 8765(d) ☒ 8771 ☐ 8773

Other: _____

Corner/
Monument: ☐ Left as found ☐ Established ☐ Rebuilt ☐ Pre-Construction
☐ Found and tagged ☒ Reestablished ☐ Referenced ☒ Post-Construction

Narrative of corner identified and monument as found and set or reset:

☒ See sheet #2 for description(s):

SET NEW MONUMENT IN MADRONE AVENUE AS SHOWN ON SHEET 2.

SURVEYOR'S STATEMENT

This Corner Record was prepared by me or under my direction in conformance with

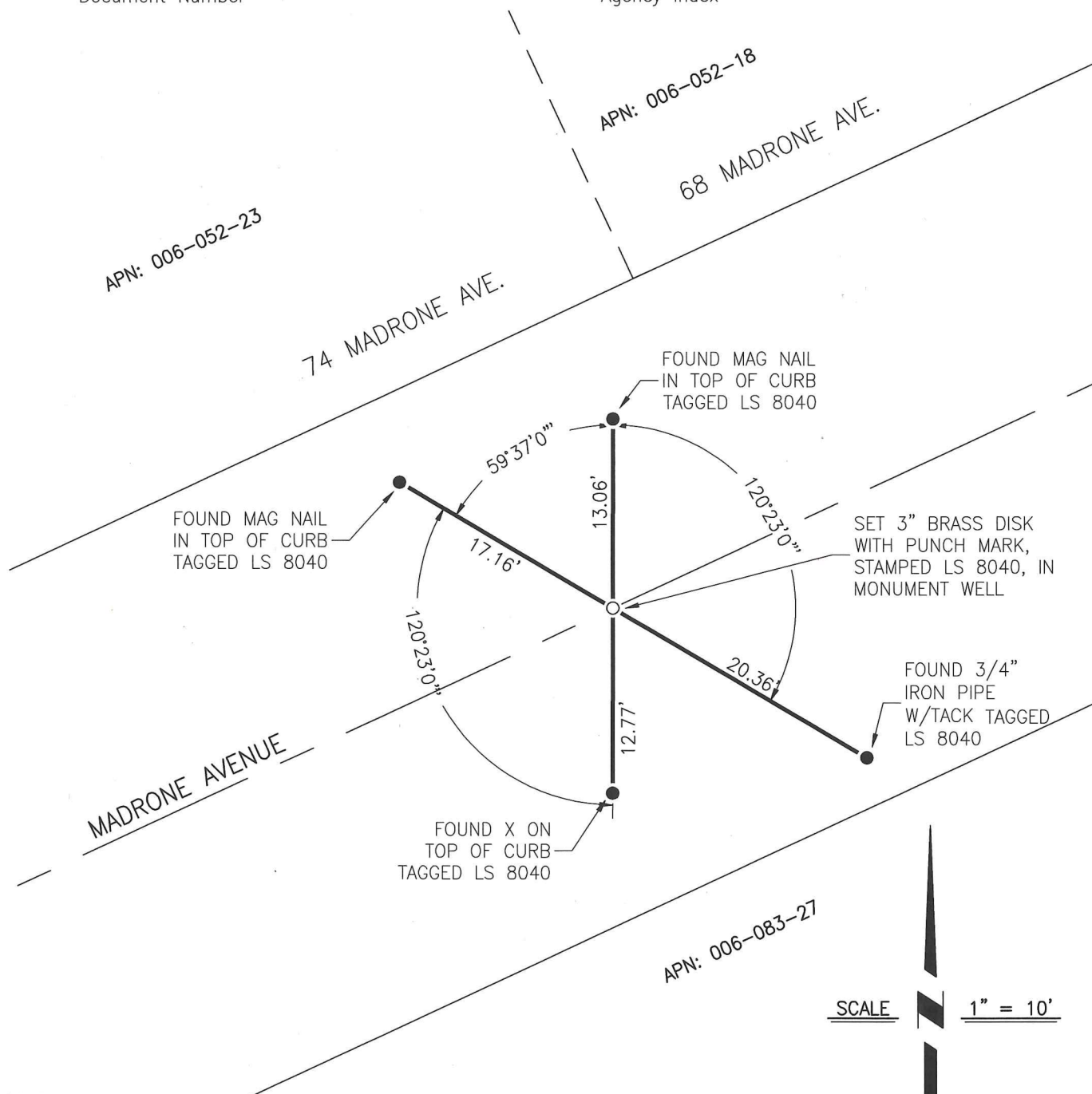
the Land Surveyor's Act on 27 NOV, 2018.Signed [Signature] P.L.S. or R.C.E. No.: 8040

COUNTY SURVEYOR'S STATEMENT

This Corner Record was received OCTOBER 29, 2018 and examinedand filed DEC. 11, 2018.Signed [Signature] P.L.S. or R.C.E. No.: 9292Title DEPUTY C.S.

County Surveyor's Comment _____





NOTES

1. ALL DISTANCES SHOWN HEREON ARE IN U.S. SURVEY FEET AND DECIMALS THEREOF.
2. MONUMENTS RESET PER SWINGTIES SHOWN ON CORNER RECORD ON FILE WITH MARIN COUNTY SURVEYOR

LEGEND:

- FOUND REFERENCE POINT AS NOTED PER CORNER RECORD DPW#18-046, APN 006-052-23
- SET MONUMENT AS NOTED