

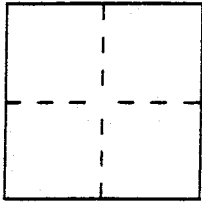
CORNER RECORD

Document Number A. P. # 005-300-26

City of SAN ANSELMO

County of MARIN, California

Brief Legal Description 21 05 65 LOT 54, ^{UNIT 3} WOODLAND PARK, 10RM92 & 111 WOODSIDE DRIVE, SAN ANSELMO



CORNER TYPE

- Government Corner
- Meander
- Rancho
- Date of Survey _____
- Control
- Property
- Other

COORDINATES (Optional)

N. _____
 E. _____
 Zone _____ Datum _____
 Elev. _____

Corner — Left as found Found and tagged Established Reestablished Rebuilt

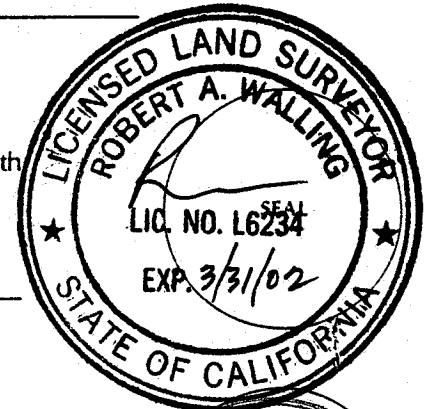
Identification and type of corner found: Evidence used to identify or procedure used to establish or reestablish the corner:
FOUND RE-BARS, IRON PIPES & LEAD W/TAG IN POSITIONS AS SHOWN ON 21 05 65.

A description of the physical condition of the monument as found and as set or reset:
SET 1/2" RE-BAR WITH CAP 'LS 6234'

SURVEYOR'S STATEMENT

This Corner Record was prepared by me or under my direction in conformance with the Land Surveyors' Act on Oct. 10 192000.

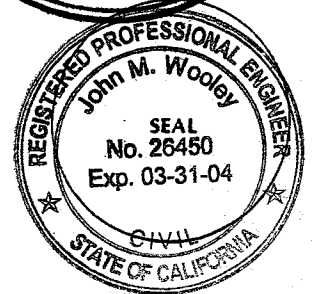
Signed [Signature] L.S. or R.C.E. Number LS 6234



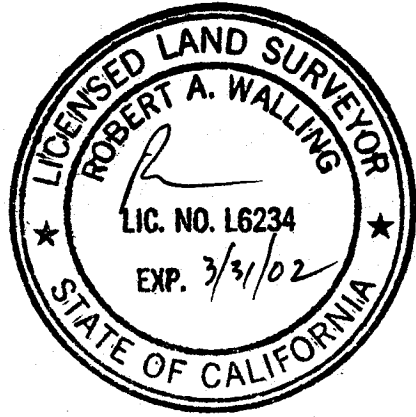
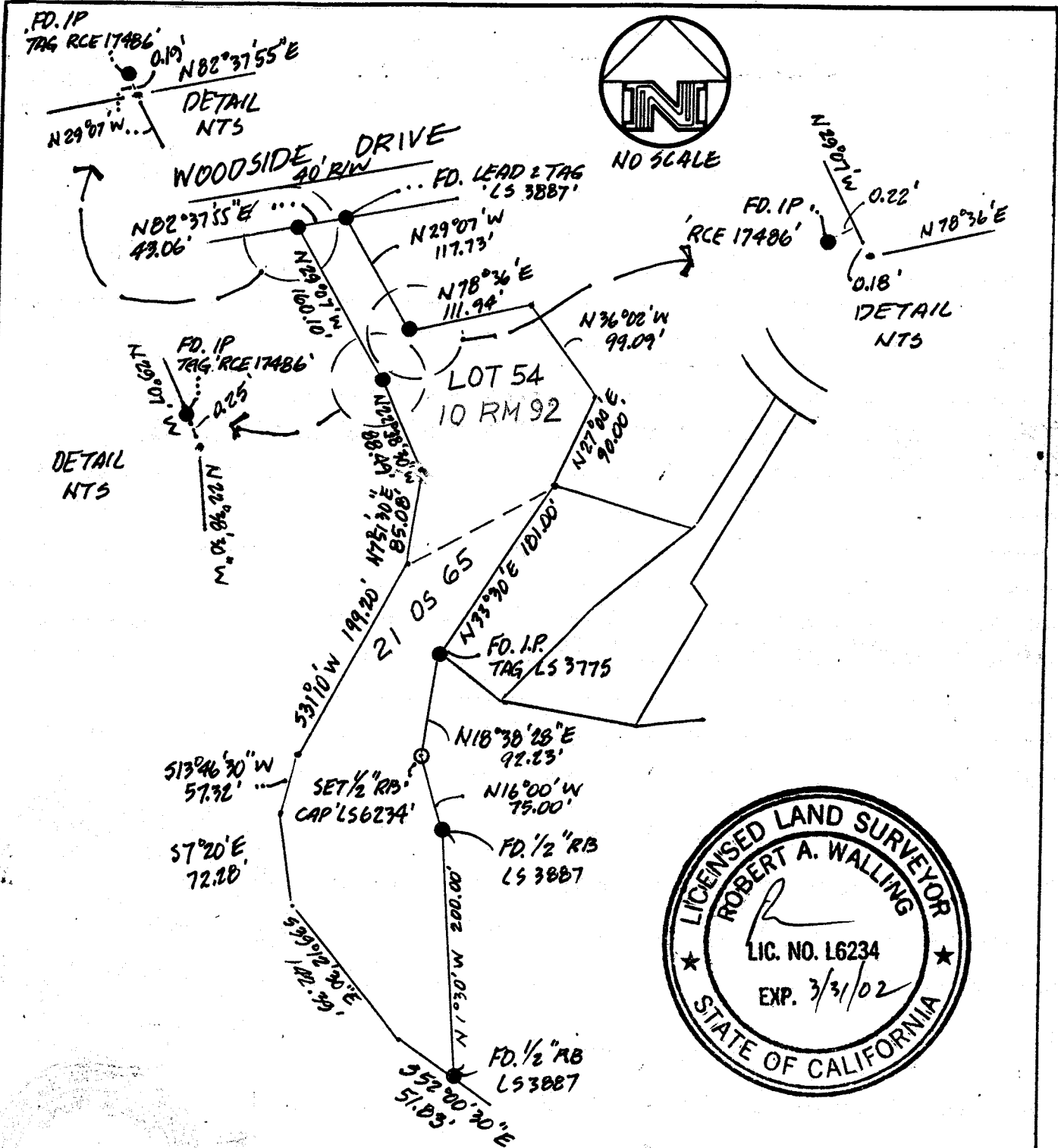
COUNTY SURVEYOR'S STATEMENT

This Corner Record was received 10-23-2000 192000 and examined and filed 10-25-2000 192000.

Signed [Signature] Title DEPUTY



County Surveyor's Comment _____



SURVEY PLAT
 111 WOODSIDE DR., SAN ANSELMO, CA.
 APN. 005-300-26



BOB WALLING TECHNICAL SERVICES
 P.O. Box 1346 • Glen Ellen, CA 95442
 (707) 938-1593 (415) 382-1593

10/20/2000

JN.100-27