

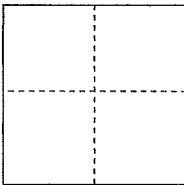
# CORNER RECORD

Documented Number APN 005-292-03

City of SAN ANSELMO

County of MARIN, California

Brief Legal Description LOT 8 OAK SPRINGS UNIT 5, 12 RM 89



**CORNER TYPE**

Government Corner  Control

Meander  PROPERTY

Rancho  Other

**COORDINATES(Optional)**

N. \_\_\_\_\_

E. \_\_\_\_\_

Zone \_\_\_\_\_ NAD27  NAD83

NAD83 Epoch \_\_\_\_\_

Elevation \_\_\_\_\_

Vert. Datum: NGVD 29  NADV88

Meas. Units: Metric  Imperial

Date of Survey June 29<sup>th</sup>, 2015

Corner- Left as found  Found and tagged  Established  Reestablished  Rebuilt

Identification and type of corner found: Evidence used to identify or procedure used to establish or reestablish the corner:

**See previous corner record for this parcel filed September 21, 2015. The purpose of this corner record is to correct the name of the City only in which this survey took place. The correct City location is San Anselmo.**

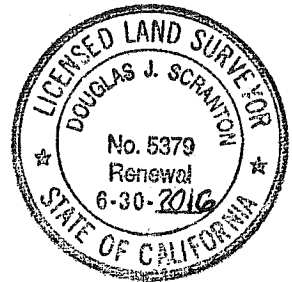
A description of the physical condition of the monument as found and as set or reset: \_\_\_\_\_

**SURVEYOR'S STATEMENT**

This Corner Record was prepared by me or under my direction in conformance with

the Land Surveyor's Act on APRIL 27, 2016

Signed Douglas J. Scranton P.L.S. or R.C.E. No.: PLS 5379



**COUNTY SURVEYOR'S STATEMENT**

This Corner Record was received MAY 4, 2016 and examined

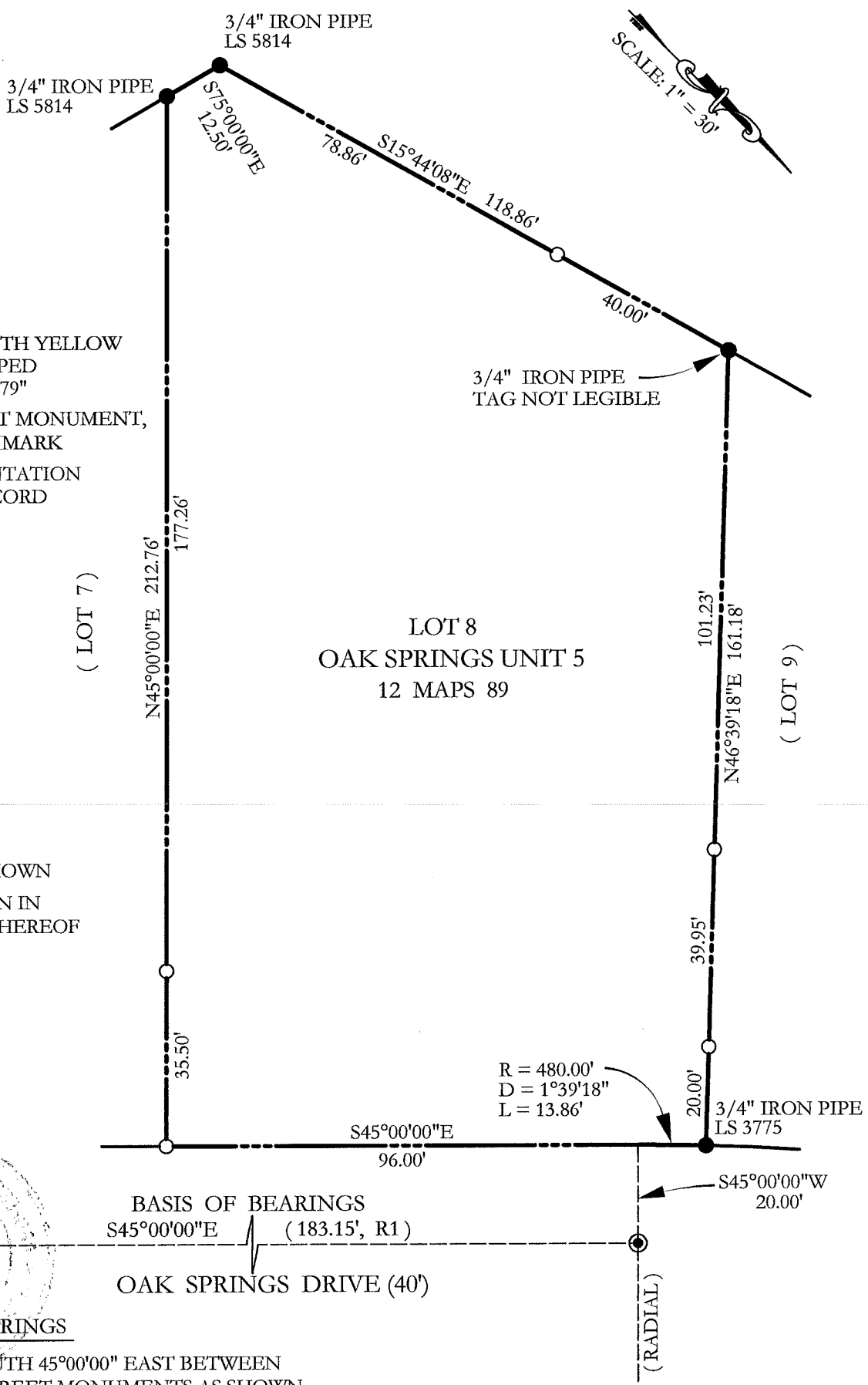
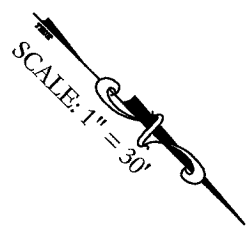
and filed JULY 7, 2016

Signed Richard G. Simonitch P.L.S. or R.C.E. No.: 7821



Title County Surveyor

County Surveyor's Comment \_\_\_\_\_



**LEGEND**

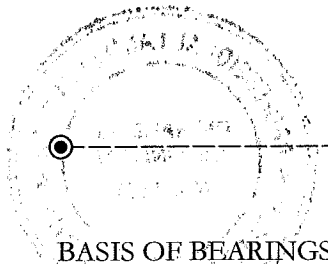
- SET 1/2" REBAR WITH YELLOW PLASTIC CAP STAMPED "SCRANTON, PLS 5379"
- ⊙ STANDARD STREET MONUMENT, DISK WITH PUNCHMARK
- FOUND MONUMENTATION AS NOTED, NO RECORD

**REFERENCES**

R1 12 MAPS 89

**NOTES:**

NO EASEMENTS ARE SHOWN  
 ALL DIMENSIONS GIVEN IN FEET AND DECIMALS THEREOF



**BASIS OF BEARINGS**

TAKEN AS SOUTH 45°00'00" EAST BETWEEN STANDARD STREET MONUMENTS AS SHOWN HEREON AND AS SAID MONUMENTS ARE DEPICTED UPON R1