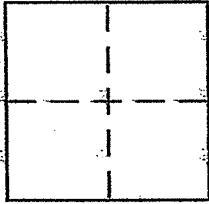


CORNER RECORD

Document Number 005.261.29
City of SAN ANSELMO County of MARIN, California

Brief Legal Description LOT 9, 20 PM 62



CORNER TYPE

Government Corner Control
Meander Property
Rancho Other
Date of Survey 2/26/08

COORDINATES (Optional)

N. _____
E. _____
Zone _____ NAD27 NAD83
NAD83 Epoch _____
Elev. _____
Vert. Datum: NGVD29 NAVD88
Meas. Units: Metric Imperial

Corner - Left as found Found and tagged Established Reestablished Rebuilt

Identification and type of corner found: Evidence used to identify or procedure used to establish or reestablish the corner:

REESTABLISH A PORTION OF THE COURSE
N 73°00' W, 40' AS SHOWN ON 20 PM 62
SEE REVERSE SIDE FOR DETAILS & SEE
ALSO PREVIOUS CORNER RECORD ON THIS
PARCEL DONE BY THIS OFFICE

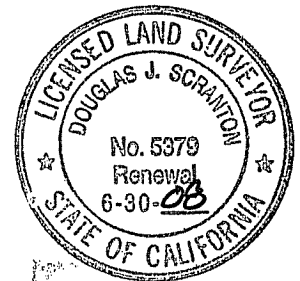
A description of the physical condition of the monument as found and as set or reset:

set 1/2" rebar
with PLS CAP 5379 AFFIXED TO TOP &
DRIVEN FLUSH TO SURROUNDING GRADE

SURVEYOR'S STATEMENT

This Corner Record was prepared by me or under my direction in conformance with the Land Surveyors Act on 3/20/2008

Signed Douglas J. Scranton P.L.S or R.C.E. No. PLS 5379



COUNTY SURVEYOR'S STATEMENT

This Corner Record was received MARCH 25, 2008

and examined and filed APRIL 30, 2008

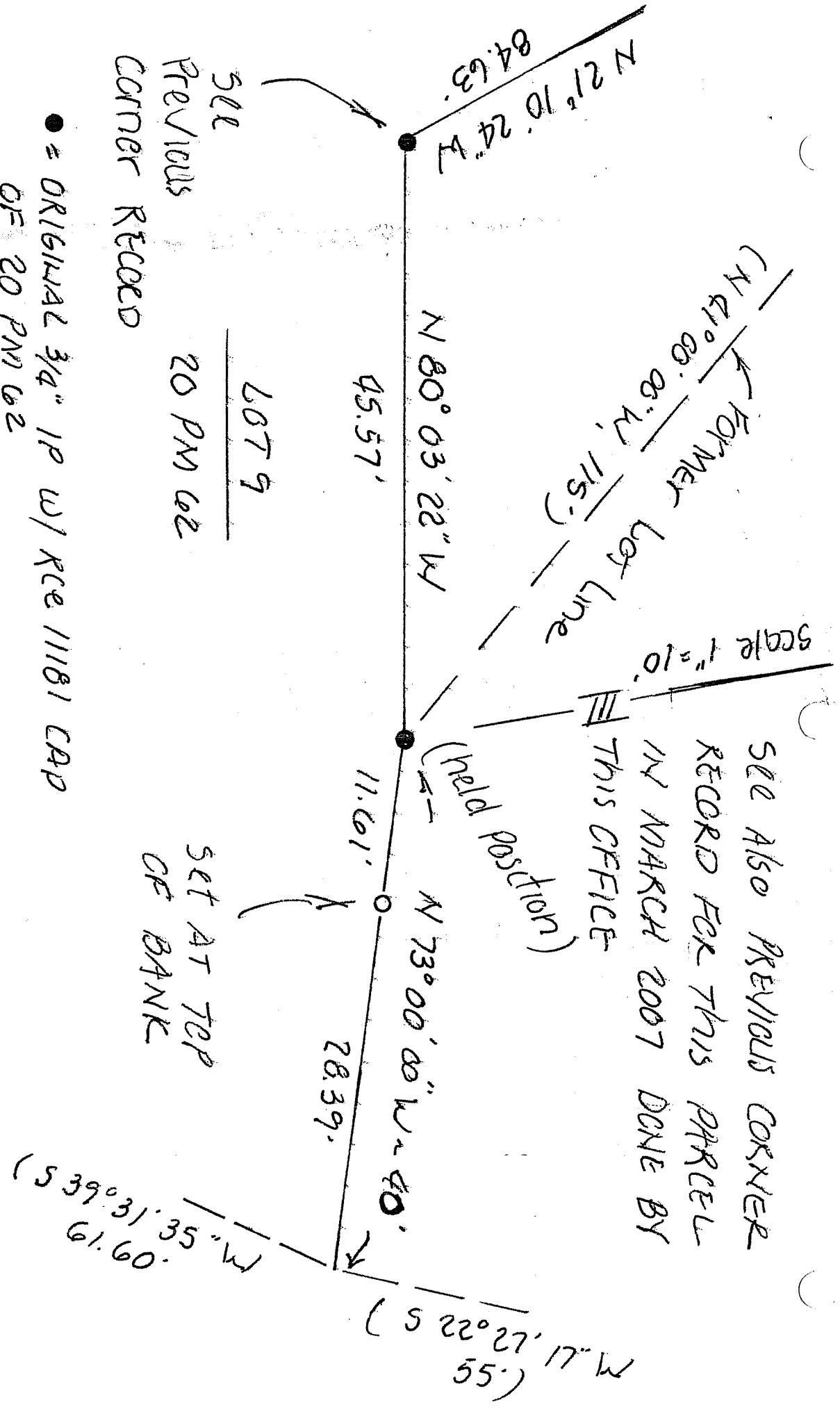
Signed _____ P.L.S or R.C.E. No. 7128

Title COUNTY SURVEYOR



County Surveyor's Comment _____

NOVATO, CA
PREPARED BY
D.J. SCRANTON SURVEYING



SEE
PREVIOUS
CORNER RECORDED

LOT 9
20 PM 62

- = ORIGINAL 3/4" IP W/ RCE 11181 CAP OF 20 PM 62
- = Set 1/2" rebar with PLS CAP 5379

BASIS OF BEARINGS TAKEN AS $S 89^{\circ} 22' 13'' E$ BETWEEN STANDARD STREET MONUMENTS ON WOODSIDE COURT SHOWN UPON 20 PM 62