

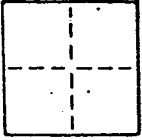
AP# 5-201-27

CORNER RECORD

COUNTY OF MARIN T. _____ R. _____ MERIDIAN _____ CALIFORNIA

CORNER TYPE: GOVT. CORNER MEANDER RANCHO CONTROL OTHER

CORNER IDENTIFICATION - DATE OF VISIT 2.14.1991



CORNER - LEFT AS FOUND FOUND AND TAGGED REESTABLISHED OBLITERATED CORNER REBUILT

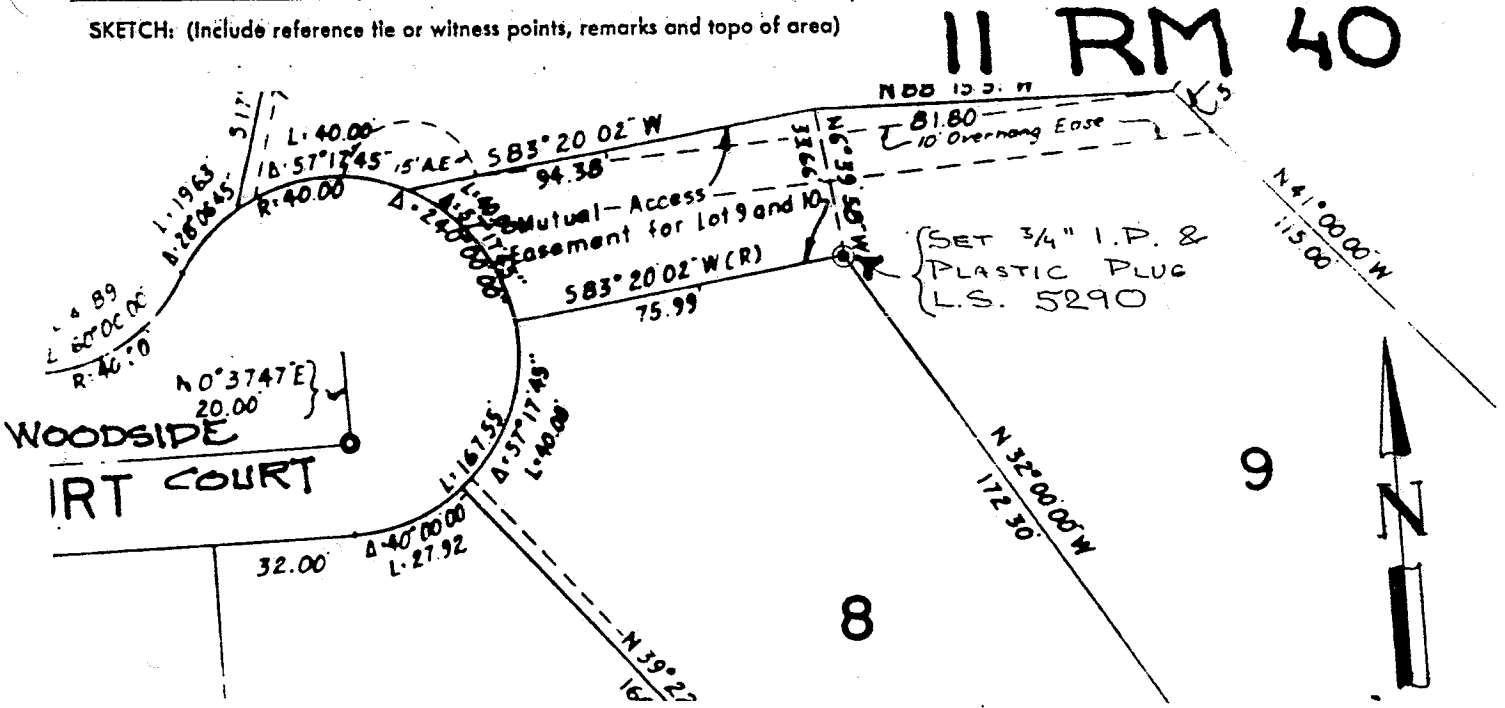
PHYSICAL DESCRIPTION OF CORNER FOUND; EVIDENCE AND METHOD USED TO IDENTIFY OR REESTABLISH

PHYSICAL DESCRIPTION OF MONUMENTS REBUILT OR PERPETUATED

3/4" IRON PIPE WITH PLASTIC PLUG
L.S. 5290

CALIFORNIA COORDINATE SYSTEM ORDER: FIRST SECOND THIRD
STATIONS USED: NGS (USC & GS) STATE COUNTY OTHER STATION _____ STATION _____
ZONE _____ ELEVATION _____ NORTHINGS (Y) _____ EASTINGS (X) _____

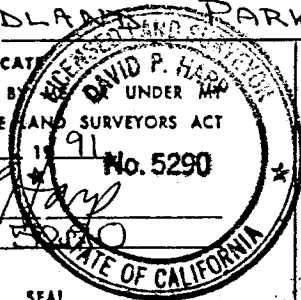
SKETCH: (Include reference tie or witness points, remarks and topo of area)



MAP OF WOODLAND PARK UNIT 4.

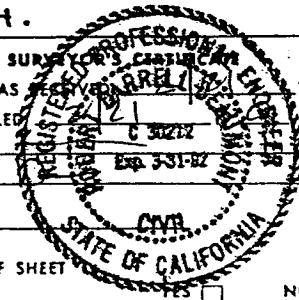
SURVEYOR'S CERTIFICATE
THIS CORNER RECORD WAS PREPARED BY DAVID P. HARRIS UNDER MAP
DIRECTION IN CONFORMANCE WITH THE LAND SURVEYORS ACT
ON 2.19.1991 No. 5290

SIGNED: David Harris
L.S. or R.C.E. No.: L.S. 5290



COUNTY SURVEYOR'S OFFICE
THE CORNER RECORD WAS RECEIVED BY DAVID P. HARRIS ON 2.19.1991
AND EXAMINED AND FILED
BY: _____
TITLE: _____

DOCUMENT No. _____
STATEMENT ON BACK OF SHEET



SEAL

YES NO