

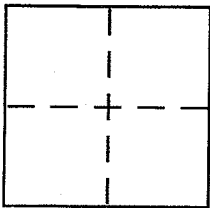
# CORNER RECORD

Document Number 005-254-15

City of San Anselmo

County of MARIN, California

Brief Legal Description Lot 37, Map of Oak Springs Unit Two, Book 9 of Maps, Page 39.



### CORNER TYPE

- Government Corner  Control
- Meander  Property
- Rancho  Other
- Date of Survey 01-27-2000

### COORDINATES (Optional)

- N. \_\_\_\_\_
- E. \_\_\_\_\_
- Zone \_\_\_\_\_ NAD27  NAD83
- NAD83 Epoch \_\_\_\_\_
- Elev. \_\_\_\_\_
- Vert. Datum: NGVD29  NAVD88
- Meas. Units: Metric  Imperial

Corner - Left as found  Found and tagged  Established  Reestablished  Rebuilt

Identification and type of corner found: Evidence used to identify or procedure used to establish or reestablish the corner:

SEE PLAT OF SURVEY, PAGE 2 OF 2.

A description of the physical condition of the monument as found and as set or reset:

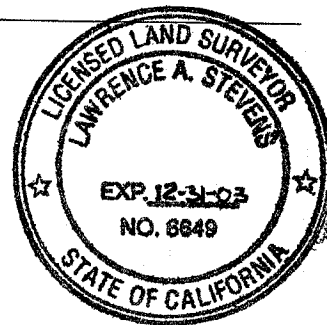
SEE PLAT OF SURVEY, PAGE 2 OF 2.

### SURVEYOR'S STATEMENT

This Corner Record was prepared by me or under my direction in conformance with

the Land Surveyor's Act on FEBRUARY 1, 2000

Signed [Signature] P.L.S. or ~~REB~~ No. 6649



### COUNTY SURVEYOR'S STATEMENT

This Corner Record was received FEBRUARY 3, 2000

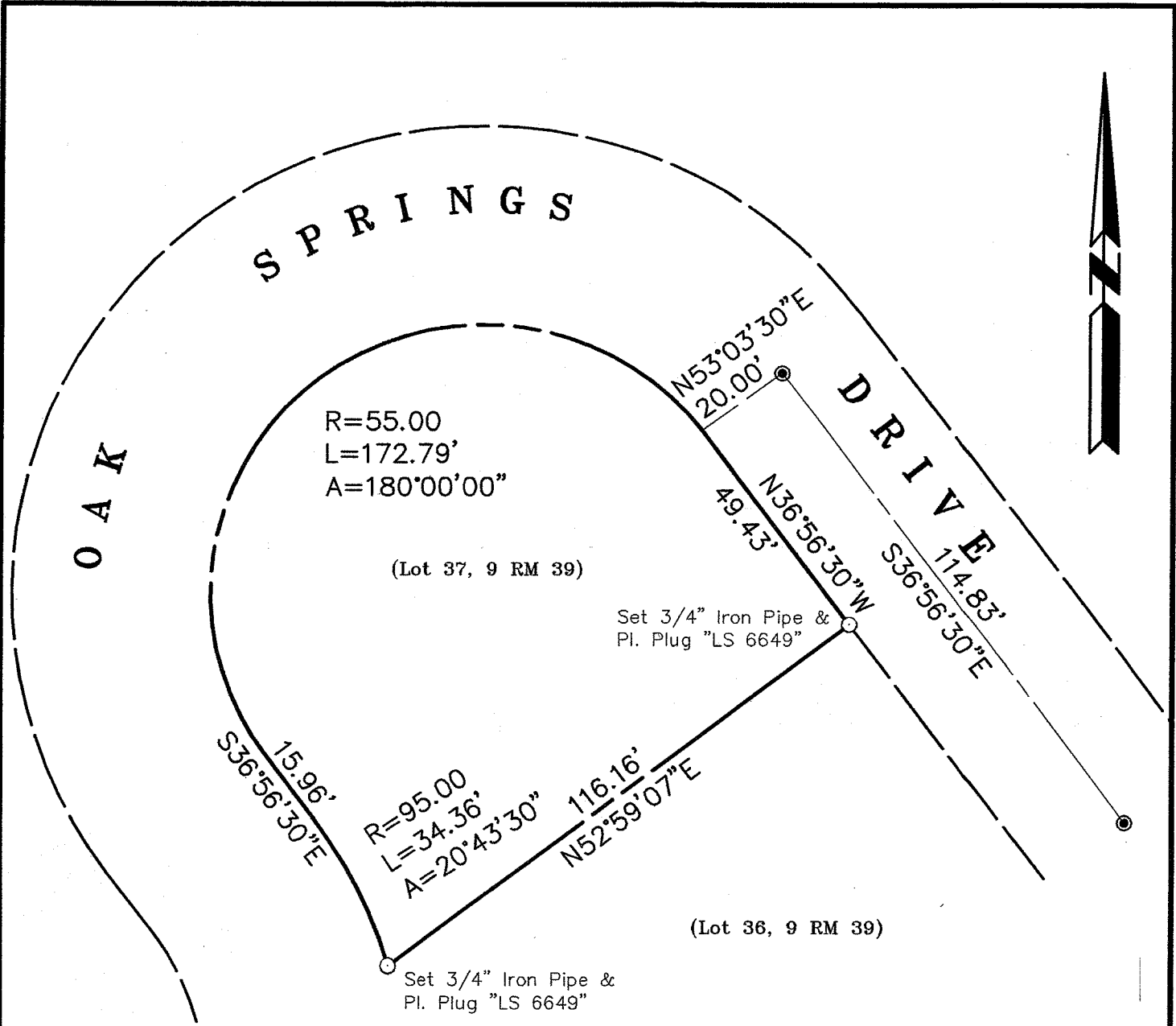
and examined and filed FEBRUARY 7, 2000

Signed [Signature] P.L.S. or R.C.E. No. 26450

Title DEPUTY COUNTY SURVEYOR



County Surveyor's Comment \_\_\_\_\_



# Corner Record Plat Lands of Frithiof

(Lot 37, 9 RM 39)

San Anselmo Marin County California  
 Scale: 1" = 30' January 2000

**L.A. Stevens & Associates, Inc.**

Professional Land Surveyors \* (415) 382-8321  
 1132 Bel Marin Keys Blvd. \* Novato, CA 94947



2-2-2000