

# CORNER RECORD

Document Number APN: 005-254-02

City of SAN ANSELMO, County of MARIN, California

Brief Legal Description: LOT 23 MAP ENTITLED "MAP OF OAK SPRINGS UNIT 2, SAN ANSELMO, CALIF."  
FILED MAY 1958, VOL. 9 OF MAPS AT PG. 39


### CORNER TYPE

Government Corner  Control   
 Meander  Property   
 Rancho  Other   
 Date of Survey 9/17/09

### COORDINATES (Optional)

N: \_\_\_\_\_  
 E: \_\_\_\_\_  
 Zone: \_\_\_\_\_ NAD 27  NAD 83   
 Elev: \_\_\_\_\_  
 Vert. Datum: NGVD29  NAVD88   
 Meas. Units: Metric  Imperial

CORNER -- LEFT AS FOUND  FOUND AND TAGGED  ESTABLISHED  REESTABLISHED  REBUILT

Identification and type of corner found: Evidence used to identify or procedure used to establish or reestablish the corner:

FOUND MONUMENTS PER VOLUME 9 OF MAPS AT PAGE 39.

A description of the physical condition of the monument as found and as set or reset: \_\_\_\_\_  
**ORIGINAL CORNERS NOT FOUND. SET POINTS AS SHOWN ON REVERSE.**

### SURVEYOR'S STATEMENT:

The corner record was prepared by me or under my direction in conformance with

the Land Surveyors' Act on OCTOBER 16TH 2009

Signed: *Michael S. Lemke* L.S.# 3602



### COUNTY SURVEYOR'S STATEMENT:

The corner record was received OCTOBER 19, 2009

and examined and filed NOVEMBER 16, 2009

Signed: *[Signature]* R.C.E. or L.S. No. 7128

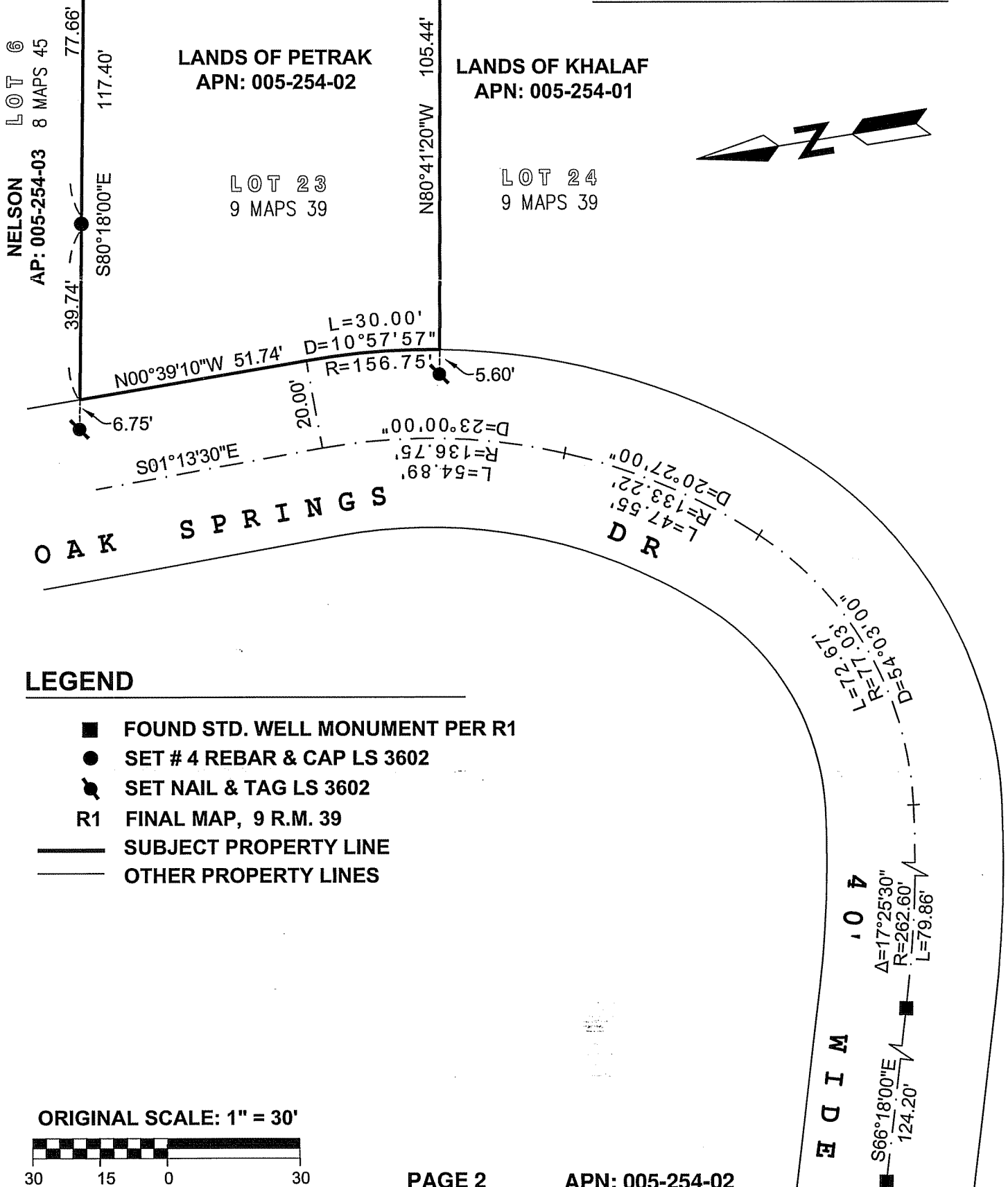
Title: COUNTY SURVEYOR



COUNTY SURVEYOR'S COMMENT: \_\_\_\_\_

AMERICAN LAND SURVEYING, INC.  
 224 Taraval St, # 4, San Francisco, Ca 94116  
 Ph: (415) 300-7467 Fx: (415) 665-7467

**CORNER RECORD**



**LEGEND**

- FOUND STD. WELL MONUMENT PER R1
- SET # 4 REBAR & CAP LS 3602
- ⊗ SET NAIL & TAG LS 3602
- R1 FINAL MAP, 9 R.M. 39
- SUBJECT PROPERTY LINE
- - - OTHER PROPERTY LINES

ORIGINAL SCALE: 1" = 30'

