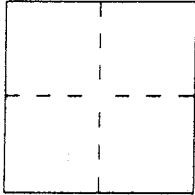


CORNER RECORD

Document Number A.P.# 5-251-16

City of San Anselmo County of Marin, California

Brief Legal Description Marin Assessors Parcel 5-251-16
Lot 19 of 9 RM 39, MCR



CORNER TYPE

Government Corner Control
Meander Property
Rancho Other
Date of Survey _____

COORDINATES
(Optional)

N. _____
E. _____
Zone _____ Datum _____
Elev. _____

Corner — Left as found Found and tagged Established Reestablished Rebuilt

Identification and type of corner found: Evidence used to identify or procedure used to establish or reestablish the corner:

Used standard street monuments in Timothy Avenue.

A description of the physical condition of the monument as found and as set or reset:

Set 1/2" Iron Rebar with Cap Embossed LS 5290.

SURVEYOR'S STATEMENT

This Corner Record was prepared by me or under my direction in conformance with the Land Surveyors' Act on March 12th 2002.

Signed David Harp L.S. or R.C.E. Number LS 5290



COUNTY SURVEYOR'S STATEMENT

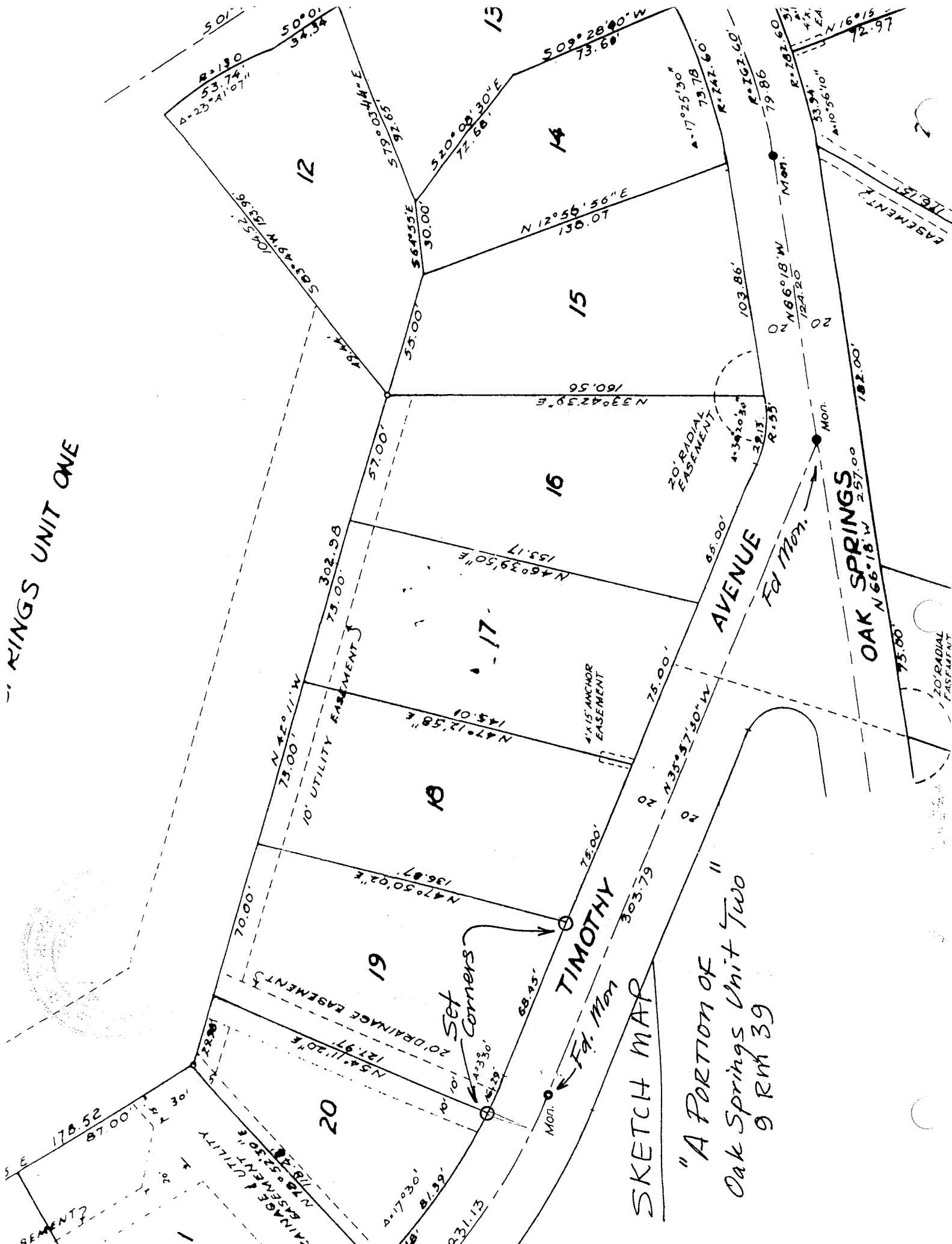
This Corner Record was received MARCH 14, 2002 and examined and filed MARCH 14, 2002

Signed Cey Title DEPUTY



County Surveyor's Comment _____

RINGS UNIT ONE



SKETCH MAP
 "A PORTION OF"
 Oak Springs Unit Two
 9 RM 39