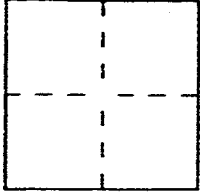


CORNER RECORD

Document Number A.P.N. 5-222-34

City of San Anselmo County of Marin, California

Brief Legal Description Portion of Lots 2,3,& 7. Block 5 unrecorded.
Map of the Cordone tract.



CORNER TYPE

Government Corner Control
Meander Property
Rancho Other
Date of Survey _____

COORDINATES (Optional)

N. _____
E. _____
Zone _____ Datum _____
Elev. _____

Corner — Left as found Found and tagged Established Reestablished Rebuilt

Identification and type of corner found: Evidence used to identify or procedure used to establish or reestablish the corner:

Found 2" brass disks stamped "RCE 10759" in monument wells on
the Centerline of Mountain View Avenue and 3/4" iron pipe
tagged "RCE 10759" per parcel map 19 PM 54.

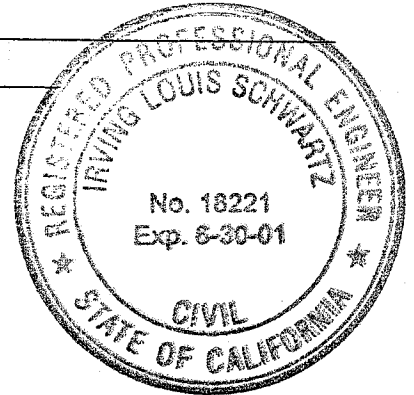
A description of the physical condition of the monument as found and as set or reset: _____

Set 3/4" iron pipe tagged "RCE 18221" at the
easterly corner of the property.

SURVEYOR'S STATEMENT

This Corner Record was prepared by me or under my direction in conformance with
the Land Surveyors' Act on SEPTEMBER 12, 2000

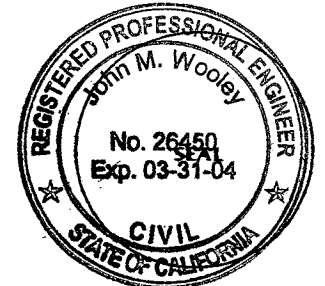
Signed [Signature] R.C.E. Number 18221



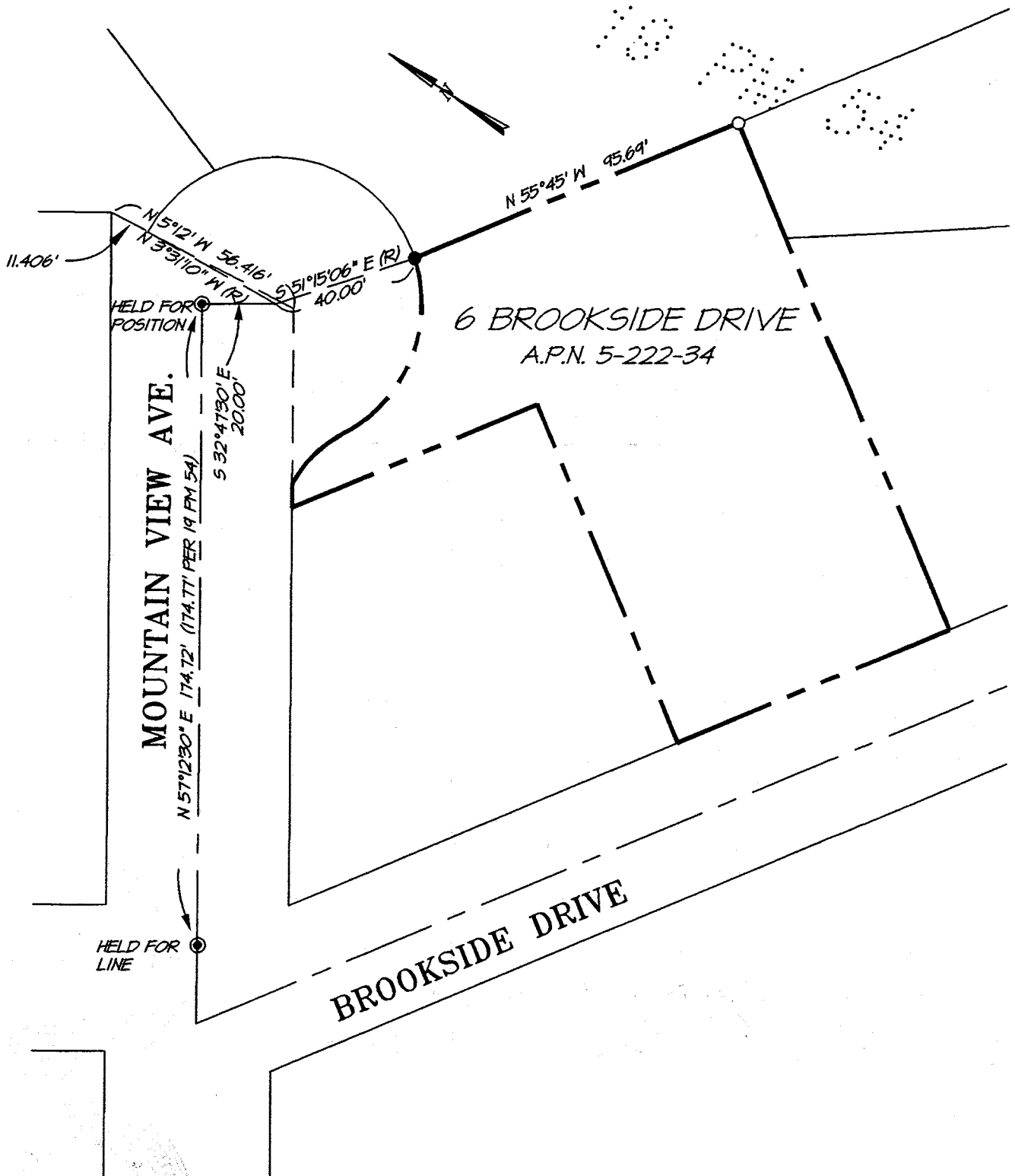
COUNTY SURVEYOR'S STATEMENT

This Corner Record was received SEPTEMBER 14, 2000 and examined
and filed SEPTEMBER 15, 2000

Signed [Signature] Title DEPUTY



County Surveyor's Comment _____



LEGEND

- ⊙ FOUND 2" DISK IN MONUMENT WELL STAMPED "R.C.E. 10759"
- FOUND 3/4" IRON PIPE & TAG "R.C.E. 10759"
- SET 3/4" IRON PIPE & TAG "R.C.E. 18221"

NOTE:

ALL DIMENSIONS SHOWN HEREON ARE PER 19 PM 54 UNLESS OTHERWISE NOTED

EXHIBIT "A"



LL. SCHWARTZ ASSOCIATES, INC.®
CIVIL ENGINEERING AND LAND SURVEYING

79 GALLI DRIVE NOVATO, CA 94949 (415)883-9200 FAX 883-2763

DATE: 12-14-99
DWG FILE: 7057CREC.DWG

A.P.N. 16-011-05