

CORNER RECORD

PRE-CONSTRUCTION

DPW# 18-076

Agency Index

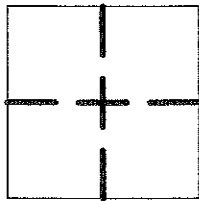
Document Number

APN 005-204-37 ADJ

City of SAN ANSELMO

County of MARIN, California

Brief Legal Description FOUND MONUMENT IN CAN PER (2008 ROS 58)



CORNER TYPE

Government Corner Control
 Meander Property
 Rancho Other
 Date of Survey 09/12/2018

COORDINATES (Optional)

N. _____ E. _____
 Elevation _____
 Units Metric U.S. Survey Foot
 Horizontal Datum _____
 Zone _____ Epoch Date _____
 Vertical Datum _____

Complies with Public Resources Code §§8801-8819
 Complies with Public Resources Code §§8890-8902

PLS Act Ref.: 8765(d) 8771 8773 Other:

Corner/Monument: Left as Found Established Rebuilt Pre-Construction
 Found and Tagged Reestablished Referenced Post-Construction

Narrative of corner identified and monument as found, set, reset, replaced, or removed:

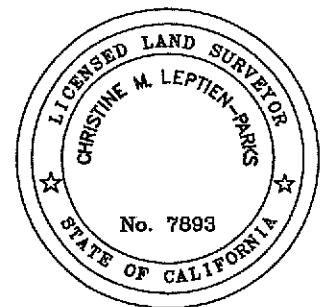
See sheet #2 for description(s):

FOUND MONUMENT (NAIL IN CONCRETE BASE IN MONUMENT CAN) IN ASPHALT PAVEMENT PER (2008 ROS 58). MONUMENT IS REFERENCED AS SHOWN ON (PAGE 2 OF 2); MONUMENT MAY BE DISTURBED DURING CONSTRUCTION; TO BE CHECKED AFTER CONSTRUCTION IS COMPLETED AND WILL BE RESET IF FOUND DISTURBED. SEE NOTE ON (PAGE 2 OF 2).

Surveyor's Comment

This Corner Record was prepared by me or under my direction in conformance with the Land Surveyors' Act on NOVEMBER 27, 2018

Signed [Signature] P.L.S. or R.C.E. No. LS 7893



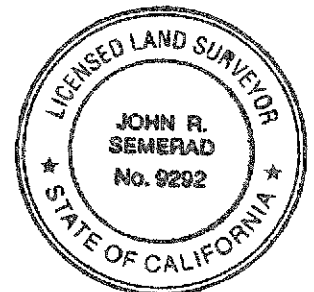
County Surveyor's Comment

This Corner Record was received DECEMBER 3, 2018

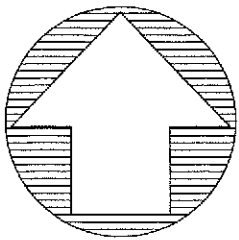
and examined and filed DEC. 20, 2018

Signed [Signature] P.L.S. OR R.C.E. NO. 9292

Title DEPUTY C.S.



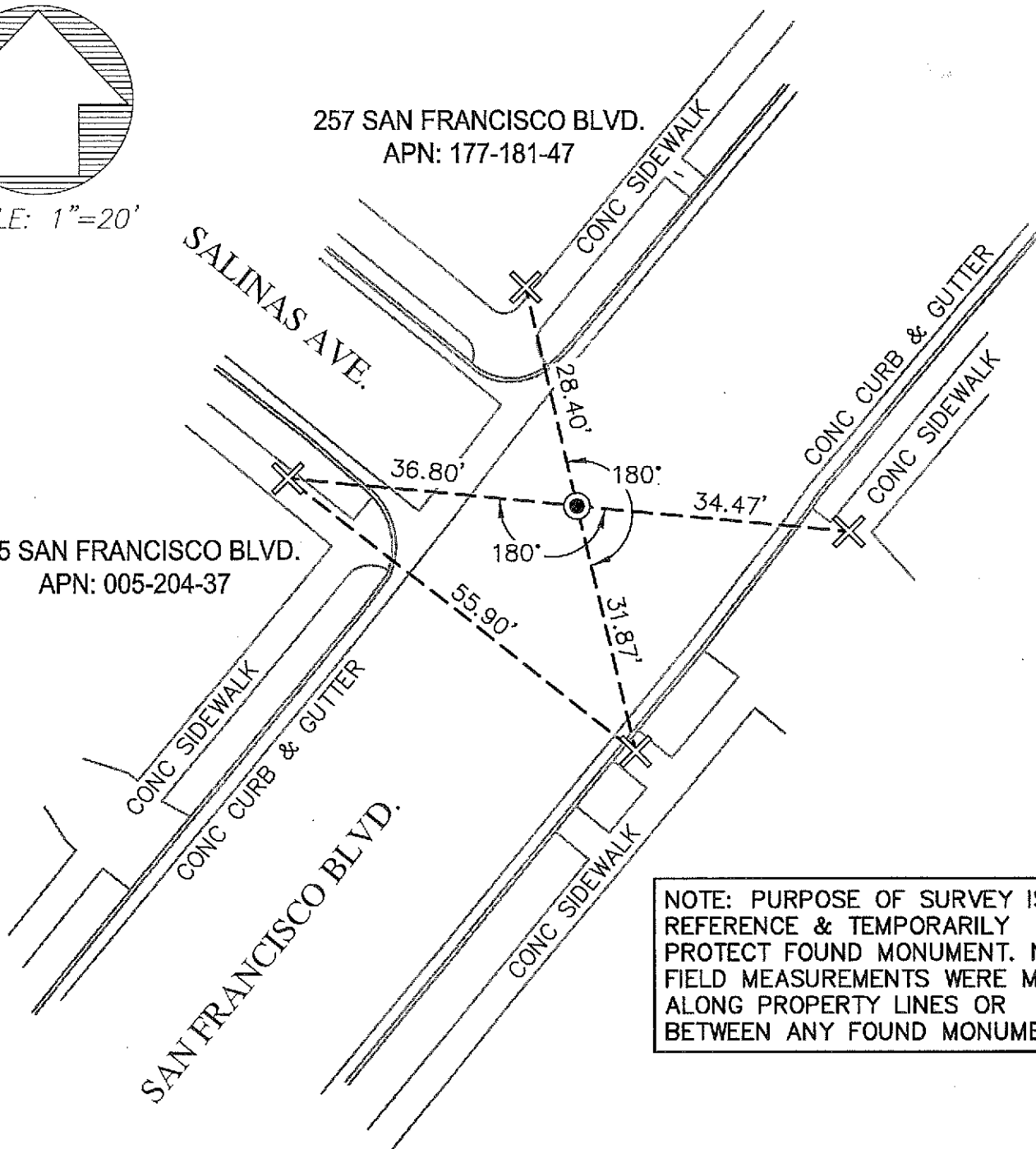
County Surveyor's Comment _____



SCALE: 1"=20'

257 SAN FRANCISCO BLVD.
APN: 177-181-47

255 SAN FRANCISCO BLVD.
APN: 005-204-37



NOTE: PURPOSE OF SURVEY IS TO REFERENCE & TEMPORARILY PROTECT FOUND MONUMENT. NO FIELD MEASUREMENTS WERE MADE ALONG PROPERTY LINES OR BETWEEN ANY FOUND MONUMENTS.

LEGEND & ABBREVIATIONS

- SURVEY TIE LINE
- EXISTING TOPOGRAPHIC FEATURES (AS OF AUGUST 2018)
- ⊗ REFERENCE POINT - SET CUT CROSS IN CONCRETE SIDEWALK (MARKED "LCC RP")
- ⊙ FOUND MONUMENT (NAIL IN CONCRETE BASE IN MONUMENT CAN) PER (2008 ROS 58)



ENGINEERING & SURVEYING, INC.

930 Estudillo Street
Martinez, California 94553-1620
(925) 228-4218 Fax (925) 228-4638
www.lcc-inc.com
JOB#2018.056.C