

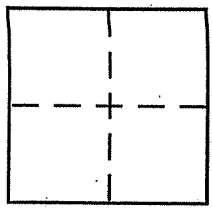
AP# 005-202-06

CORNER RECORD

Document Number 2007-053983
County of MARIN, California

City of SAN ANSELMO

Brief Legal Description LOT 329, 4 RM 22



CORNER TYPE

Government Corner Control
Meander Property
Rancho Other
Date of Survey 2/19/10

COORDINATES (Optional)

N. _____
E. _____
Zone _____ NAD27 NAD83
NAD83 Epoch _____
Elev. _____
Vert. Datum: NGVD29 NAVD88
Meas. Units: Metric Imperial

Corner - Left as found Found and tagged Established Reestablished Rebuilt

Identification and type of corner found: Evidence used to identify or procedure used to establish or reestablish the corner:

SEE SHEET 2

A description of the physical condition of the monument as found and as set or reset:

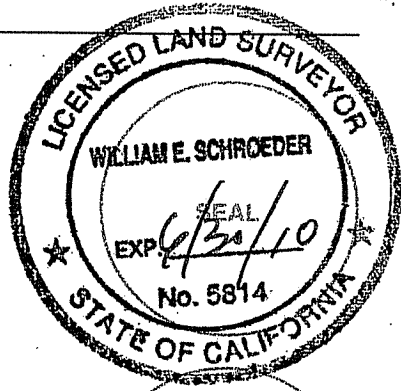
SEE SHEET 2

SURVEYOR'S STATEMENT

This Corner Record was prepared by me or under my direction in conformance with

the Land Surveyor's Act on 2/26/10

Signed [Signature] P.L.S or R.C.E. No. 5814



COUNTY SURVEYOR'S STATEMENT

This Corner Record was received 3-1-2010

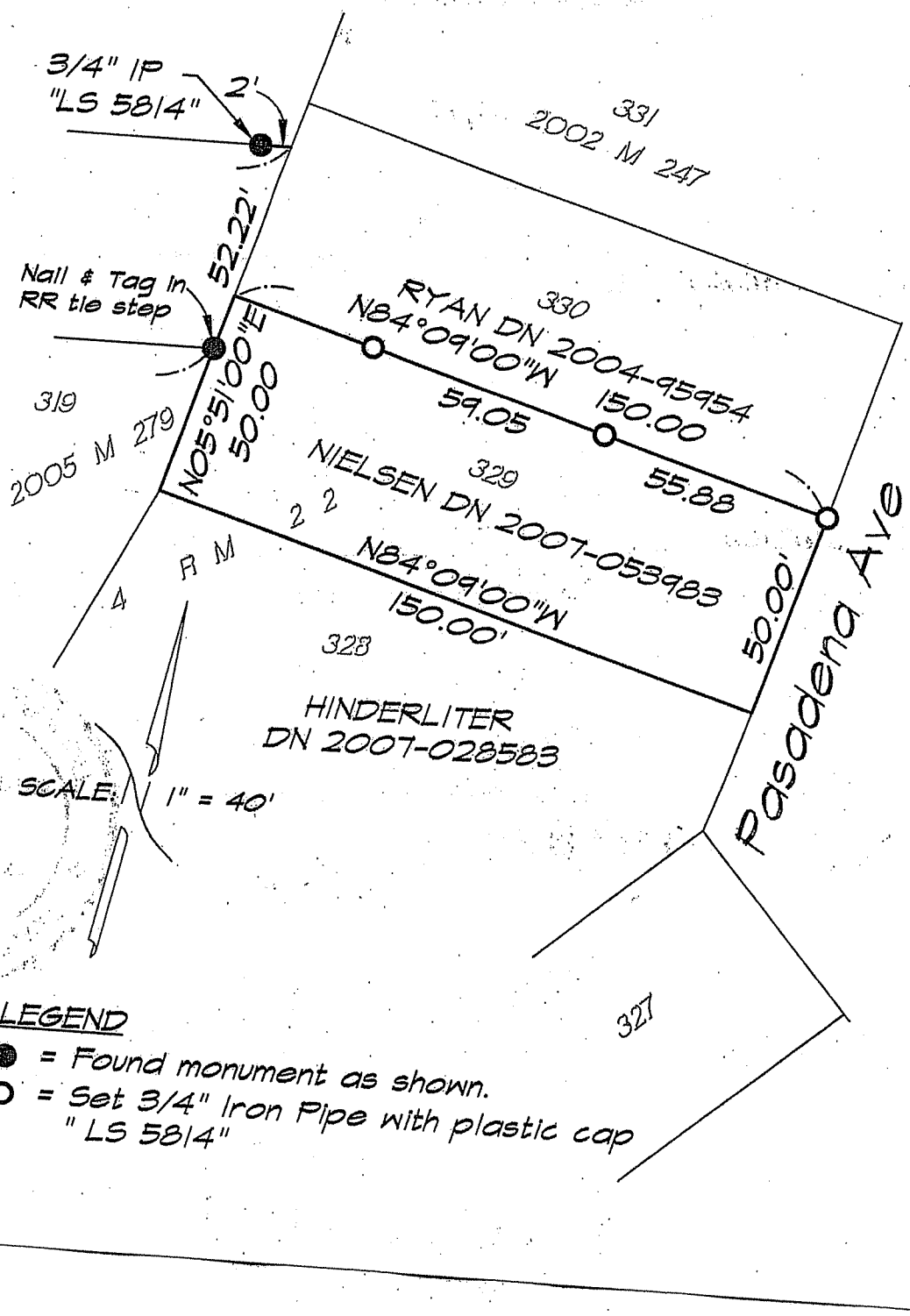
and examined and filed 3-17-2010

Signed [Signature] P.L.S or R.C.E. No. 7128

Title COUNTY SURVEYOR



County Surveyor's Comment _____



SCALE: 1" = 40'

- LEGEND**
- = Found monument as shown.
 - = Set 3/4" Iron Pipe with plastic cap "LS 5814"