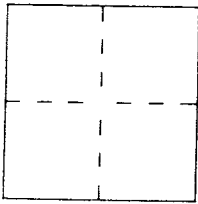


CORNER RECORD

Document Number A.P. # 5-191-23
County of MARIN, California

City of SAN ANSELMO

Brief Legal Description _____



CORNER TYPE

Government Corner Control
Meander Property
Rancho Other
Date of Survey _____

COORDINATES (Optional)

N. _____
E. _____
Zone _____ Datum _____
Elev. _____

Corner — Left as found Found and tagged Established Reestablished Rebuilt

Identification and type of corner found: Evidence used to identify or procedure used to establish or reestablish the corner:
FOUND 3/4" I.P. # TAG L.S. 5065, AS SHOWN ON 33 65 80,
AND ON REVERSE,

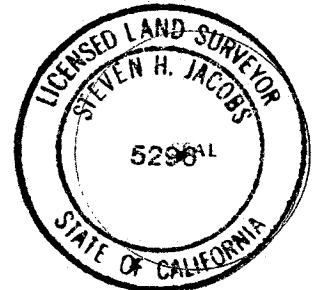
A description of the physical condition of the monument as found and as set or reset:
SET 3/4" I.P. # TAG L.S. 5296

APN 005-191-23

SURVEYOR'S STATEMENT

This Corner Record was prepared by me or under my direction in conformance with
the Land Surveyor's Act of FEBRUARY 23, 2000

Signed [Signature] L.S. or R.C.E. Number 5296



COUNTY SURVEYOR'S STATEMENT

This Corner Record was received MARCH 14, 2000 and examined
and filed MARCH 17, 2000

Signed [Signature] Title DEPUTY

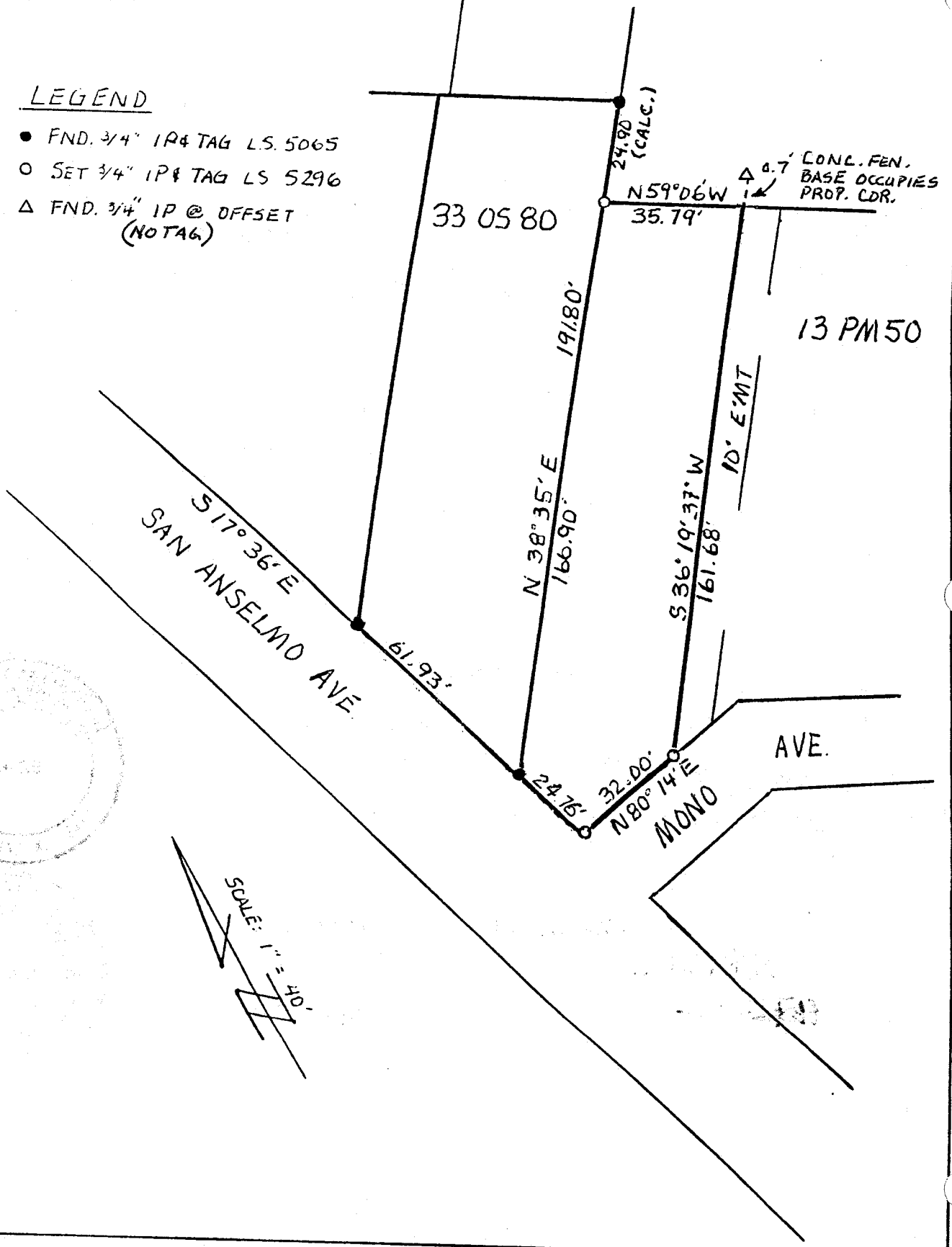


County Surveyor's Comment _____

3RM 78

LEGEND

- FND. 3/4" IP & TAG LS. 5065
- SET 3/4" IP & TAG LS 5296
- △ FND. 3/4" IP @ OFFSET (NOTAG)



SCALE: 1" = 40'