

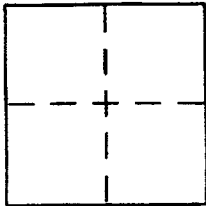
CORNER RECORD

Document Number APN 005-172-77

City of SAN ANSELMO

County of MARIN, California

Brief Legal Description LOT 62 OF 51M135



CORNER TYPE

Government Corner Control
Meander Property
Rancho Other
Date of Survey 21 AUG 02

COORDINATES (Optional)

N. _____
E. _____
Zone _____ NAD27 NAD83
NAD83 Epoch _____
Elev. _____
Vert. Datum: NGVD29 NAVD88
Meas. Units: Metric Imperial

Corner - Left as found Found and tagged Established Reestablished Rebuilt

Identification and type of corner found: Evidence used to identify or procedure used to establish or reestablish the corner:

SEE PAGE 2

A description of the physical condition of the monument as found and as set or reset:

SEE PAGE 2

SURVEYOR'S STATEMENT

This Corner Record was prepared by me or under my direction in conformance with

the Land Surveyor's Act on AUGUST 21 2002

Signed [Signature] P.L.S or R.C.E. No. 6784



COUNTY SURVEYOR'S STATEMENT

This Corner Record was received AUGUST 22, 2002

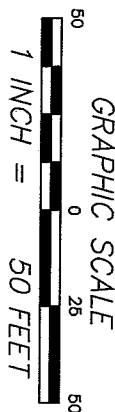
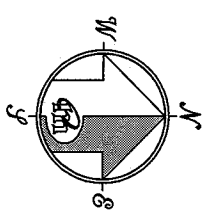
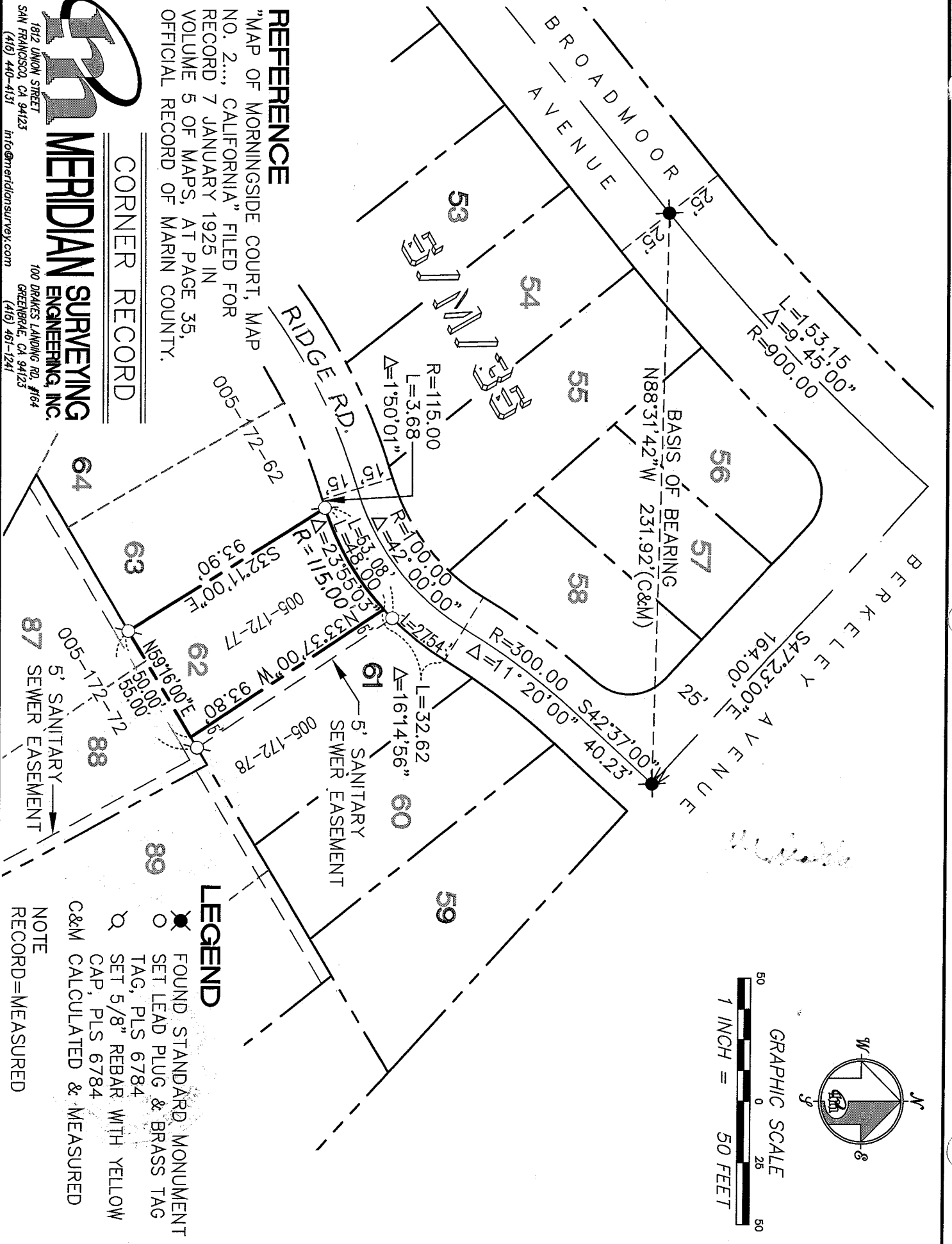
and examined and filed AUGUST 26, 2002

Signed [Signature] P.L.S or R.C.E. No. 7128

Title DEPUTY

County Surveyor's Comment _____





REFERENCE

"MAP OF MORNINGSIDE COURT, MAP NO. 2.... CALIFORNIA" FILED FOR RECORD 7 JANUARY 1925 IN VOLUME 5 OF MAPS, AT PAGE 35, OFFICIAL RECORD OF MARIN COUNTY.

CORNER RECORD



MERIDIAN SURVEYING, INC.
 1812 UNION STREET
 SAN FRANCISCO, CA 94123
 (415) 440-4131
 info@meridiansurveying.com

100 DRAKES LANDING RD, #164
 GREENBRAE, CA 94123
 (415) 451-1241

LEGEND

- FOUND STANDARD MONUMENT
- SET LEAD PLUG & BRASS TAG, PLS 6784
- SET 5/8" REBAR WITH YELLOW CAP, PLS 6784
- C&M CALCULATED & MEASURED

NOTE
 RECORD=MEASURED