

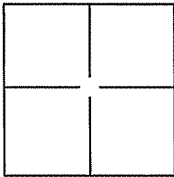
CORNER RECORD

Document Number A.P.N. 005-153-41,42,43

City of San Anselmo

County of Marin, California

Brief Legal Description Lots 1, 2 and 3, 1535 Sir Francis Drake Blvd., 2006 PM 53.



CORNER TYPE

Government Corner Control
 Meander Property
 Rancho Other

Date of Survey 18 March 2010

COORDINATES(Optional)

N. _____
 E. _____
 Zone _____ NAD27N AD83
 NAD83 Epoch _____
 Elev. _____
 Vert. Datum: NGVD29 NADV88
 Meas. Units: Metric Imperial

Corner - Left as found Found and tagged Established Reestablished Rebuilt

Identification and type of corner found: Evidence used to identify or procedure used to establish or reestablish the corner:

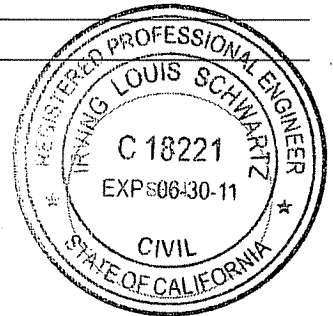
A description of the physical condition of the monument as found and as set or reset: _____

Set 3/4" Iron Pipe at NE corner of Lot 3, and Brass Nail and Tag (6 along southerly line of Lot 3, 2 on easterly line of Lot 1, 1 on westerly line of Lot 1 and 1 at southeasterly corner of Lot 1), and Mag Nail and Washer at southeasterly corner of Lot 2, See Exhibit "A".

SURVEYOR'S STATEMENT

This Corner Record was prepared by me or under my direction in conformance with the Land Surveyor's Act on APRIL 19, 2010.

Signed [Signature] P.L.S. or R.C.E. No.: 18221



COUNTY SURVEYOR'S STATEMENT

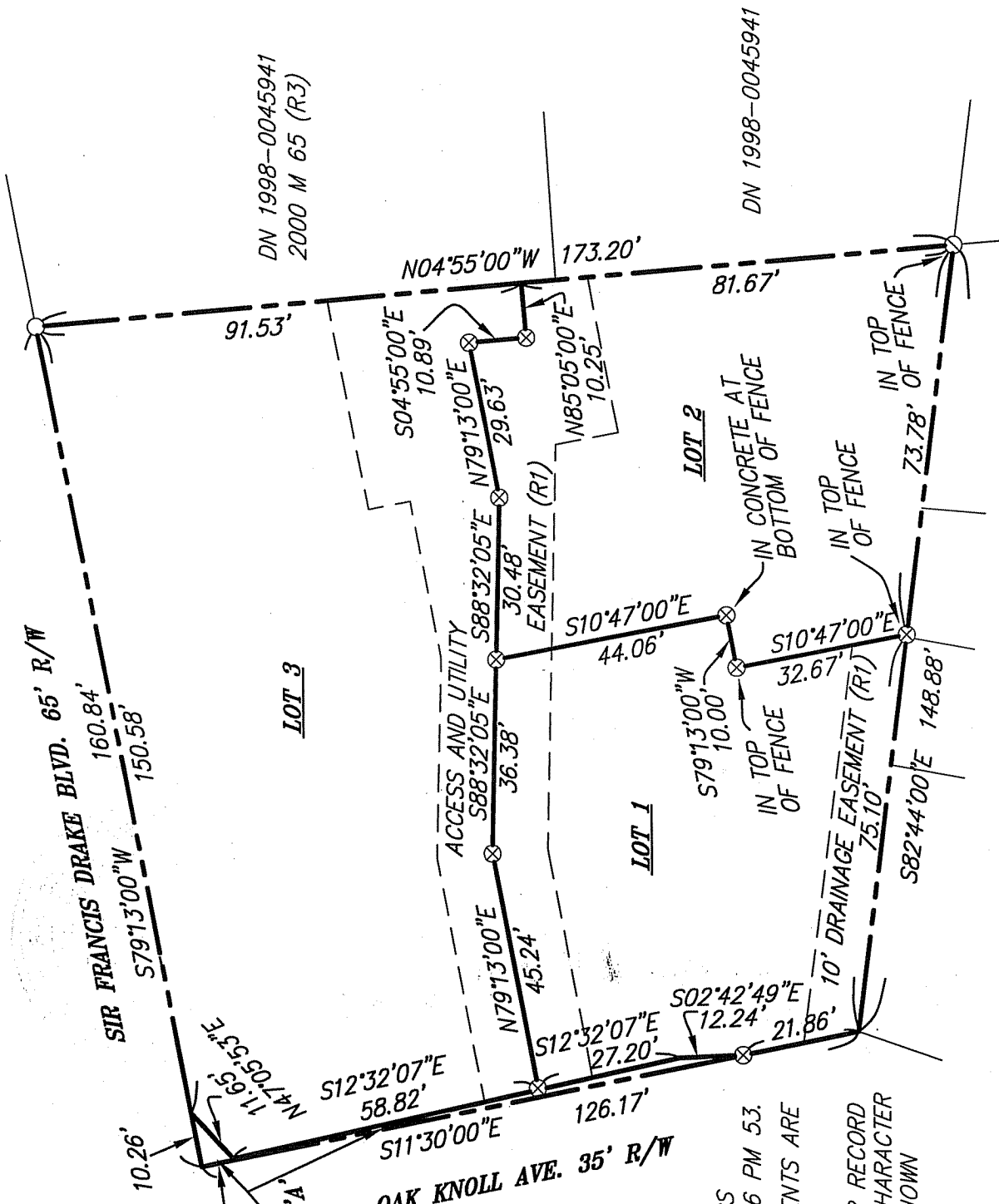
This Corner Record was received APRIL 20, 2010 and examined and filed APRIL 28, 2010.

Signed [Signature] P.L.S. or R.C.E. No.: 7128

Title COUNTY SURVEYOR

County Surveyor's Comment _____





DN 1998-0045941
2000 M 65 (R3)

DN 1998-0045941

SIR FRANCIS DRAKE BLVD. 65' R/W
160.84'
150.58'
S79°13'00"W

LOT 3

LOT 1

LOT 2

OAK KNOLL AVE. 35' R/W

SCALE: 1"=30' PARCEL 'A'

EXHIBIT "A"

I L S ASSOCIATES, INC.®
CIVIL ENGINEERING AND LAND SURVEYING



79 GALLI DRIVE SUITE A NOVATO, CA 94948-6777 (415) 885-6200 FAX (415) 885-2768

- NOTES:**
1. ALL DIMENSIONS AND BEARINGS SHOWN HEREON ARE PER 2006 PM 53.
 2. THE LOCATION OF ALL MONUMENTS ARE AS SHOWN ON 2006 PM 53.
 3. THE PURPOSE OF THIS CORNER RECORD IS TO SHOW THE CHANGE IN CHARACTER OF MONUMENTS FROM THAT SHOWN ON 2006 PM 53.

LEGEND

- REFERENCES**
- R1 2 RM 46 ○ SET 3/4" IRON PIPE & CAP "R.C.E. 18221"
 - R2 32 OS 63 ⊗ SET BRASS NAIL AND TAG "R.C.E. 18221"
 - R3 2000 M 65 ○ SET MAG NAIL AND WASHER "R.C.E. 18221"
 - R4 2 RM 91