

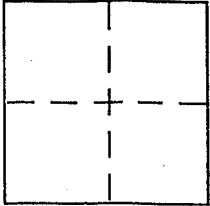
CORNER RECORD

Document Number APN 005-153-39

City of SAN ANSELMO

County of MARIN, California

Brief Legal Description APN 005-153-39



CORNER TYPE

Government Corner Control
Meander Property
Rancho Other
Date of Survey SEPTEMBER 12/05

COORDINATES (Optional)

N. _____
E. _____
Zone _____ NAD27 NAD83
NAD83 Epoch _____
Elev. _____
Vert. Datum: NGVD29 NAVD88
Meas. Units: Metric Imperial

Corner - Left as found Found and tagged Established Reestablished Rebuilt

Identification and type of corner found: Evidence used to identify or procedure used to establish or reestablish the corner:

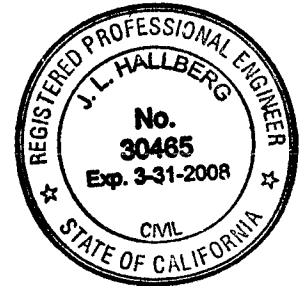
~~Set~~ found corners per 32 RS 63

A description of the physical condition of the monument as found and as set or reset: Set corners per 32 RS 63

SURVEYOR'S STATEMENT

This Corner Record was prepared by me or under my direction in conformance with the Land Surveyor's Act on SEPTEMBER 22 2005

Signed Jay L. Hg P.L.S or R.C.E. No. 30465



COUNTY SURVEYOR'S STATEMENT

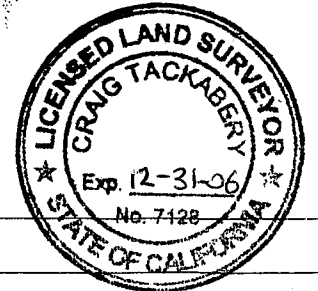
This Corner Record was received SEPTEMBER 23, 2005

and examined and filed OCTOBER 18, 2005

Signed Cy P.L.S or R.C.E. No. 7128

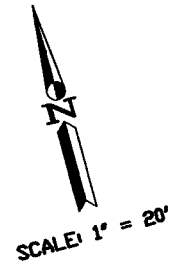
Title COUNTY SURVEYOR

County Surveyor's Comment _____



Lands of McGuire
 1535 Sir Francis Drake
 DN 02-122052
 AP# 005-153-01
 Lot 2A
 (2 RM 91)

Lands of Mayock Lot 3A
 1515 Sir Francis Drake (2 RM 91)
 DN 98-45941
 AP# 005-153-34



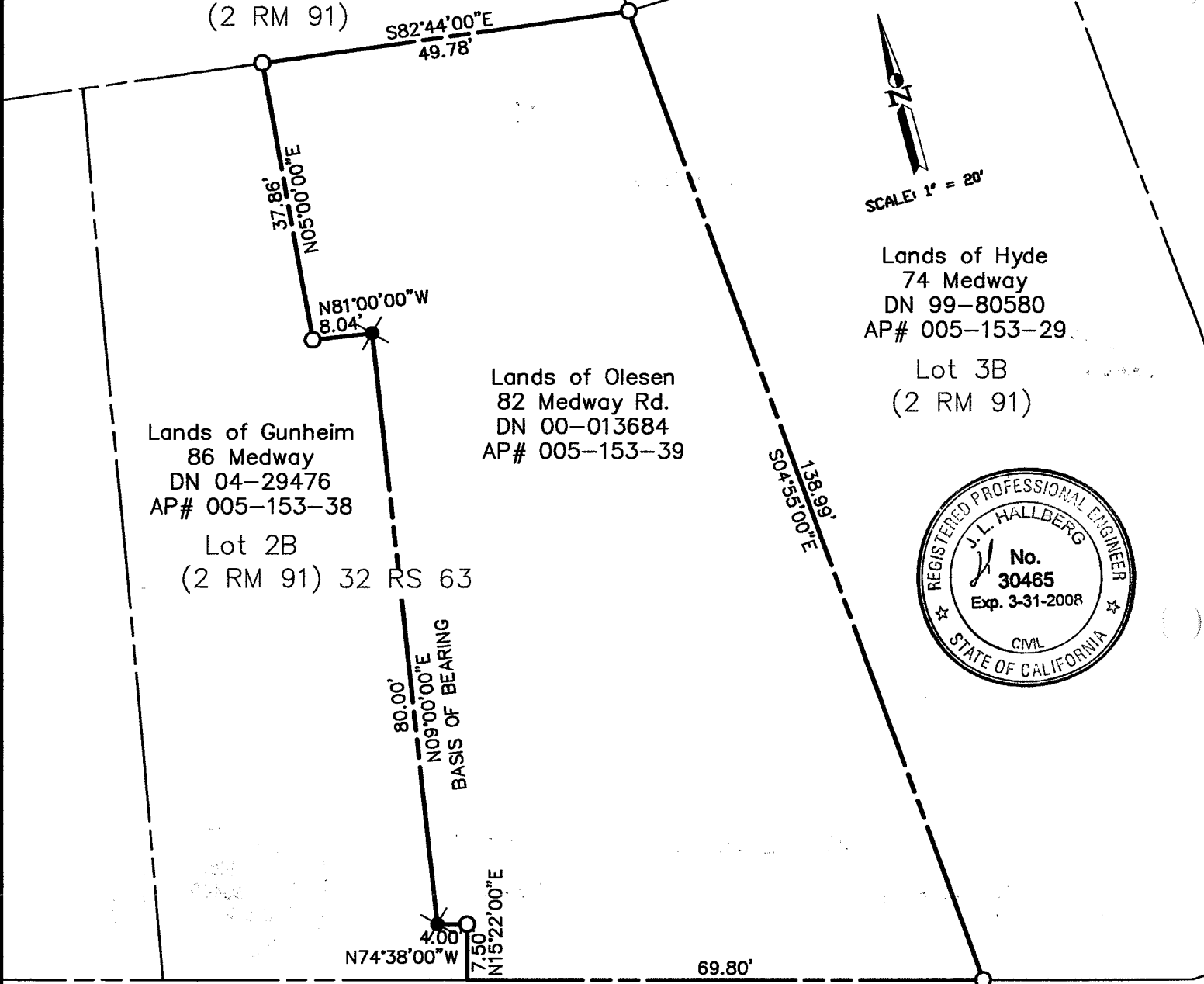
Lands of Hyde
 74 Medway
 DN 99-80580
 AP# 005-153-29

Lot 3B
 (2 RM 91)

Lands of Olesen
 82 Medway Rd.
 DN 00-013684
 AP# 005-153-39

Lands of Gunheim
 86 Medway
 DN 04-29476
 AP# 005-153-38

Lot 2B
 (2 RM 91) 32 RS 63



MEDWAY RD.
 (30' R/W)

LEGEND

- FOUND 1/2" REBAR & PLUG, LS 4694 PER 32 RS 63
- SET 3/4" I.P. & PLASTIC PLUG, RCE 30465

Note: All distances are in feet and decimals thereof.

SHEET	1	OF	1
SCALE:	1" = 20'	DESIGN:	
DATE:	9-21-05	DRAWN:	
FILE:	2005-146	CHECKED:	J.L.H

G:\Land Projects\2005-146\dwg\CorRec.dwg

J.L. ENGINEERING
 CIVIL ENGINEERS-LAND SURVEYORS
 1539 4th ST., SAN RAFAEL, CA. 94901 (415) 457-6647

Corner Record
 Lands of Olesen - 82 Medway Road
 APN 005-153-39, San Anselmo, Marin County, CA