

CORNER RECORD

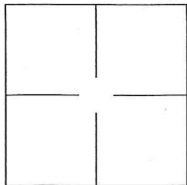
Agency Index DPW# 18-058

Document Number APN 005-143-10 ADJ

City of SAN ANSELMO

County of MARIN, California

Brief Legal Description MONUMENT AT INTERSECTION OF BROADMOOR AVENUE & MORNINGSIDE DRIVE.



CORNER TYPE

- Government Corner Control
- Meander Property
- Rancho Other

Date of Survey 2018-06-18

COORDINATES (Optional)

N. _____ E. _____

Elevation _____

Units Metric U.S. Survey Foot

Horizontal Datum _____

Zone _____ Epoch Date _____

Vertical Datum: _____

Complies with Public Resources Code §§8801-8819

Complies with Public Resources Code §§8890-8902

PLS Act Ref.: 8765(d) 8771 8773

Other: _____

Corner/Monument: Left as found Established Rebuilt Pre-Construction
 Found and tagged Reestablished Referenced Post-Construction

Narrative of corner identified and monument as found and set or reset:

See sheet #2 for description(s):

FOUND MONUMENT AT INTERSECTION OF BROADMOOR AVENUE & MORNINGSIDE DRIVE AS SHOWN ON THE MAP OF MORNINGSIDE COURT, VOLUME 5, PAGE 32, MARIN COUNTY RECORDS.

SURVEYOR'S STATEMENT

This Corner Record was prepared by me or under my direction in conformance with

the Land Surveyor's Act on 1 NOV, 2018.

Signed [Signature] P.L.S. or R.C.E. No.: 8040



COUNTY SURVEYOR'S STATEMENT

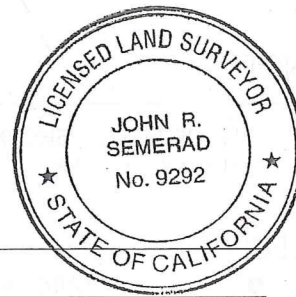
This Corner Record was received NOV. 1, 2018 and examined

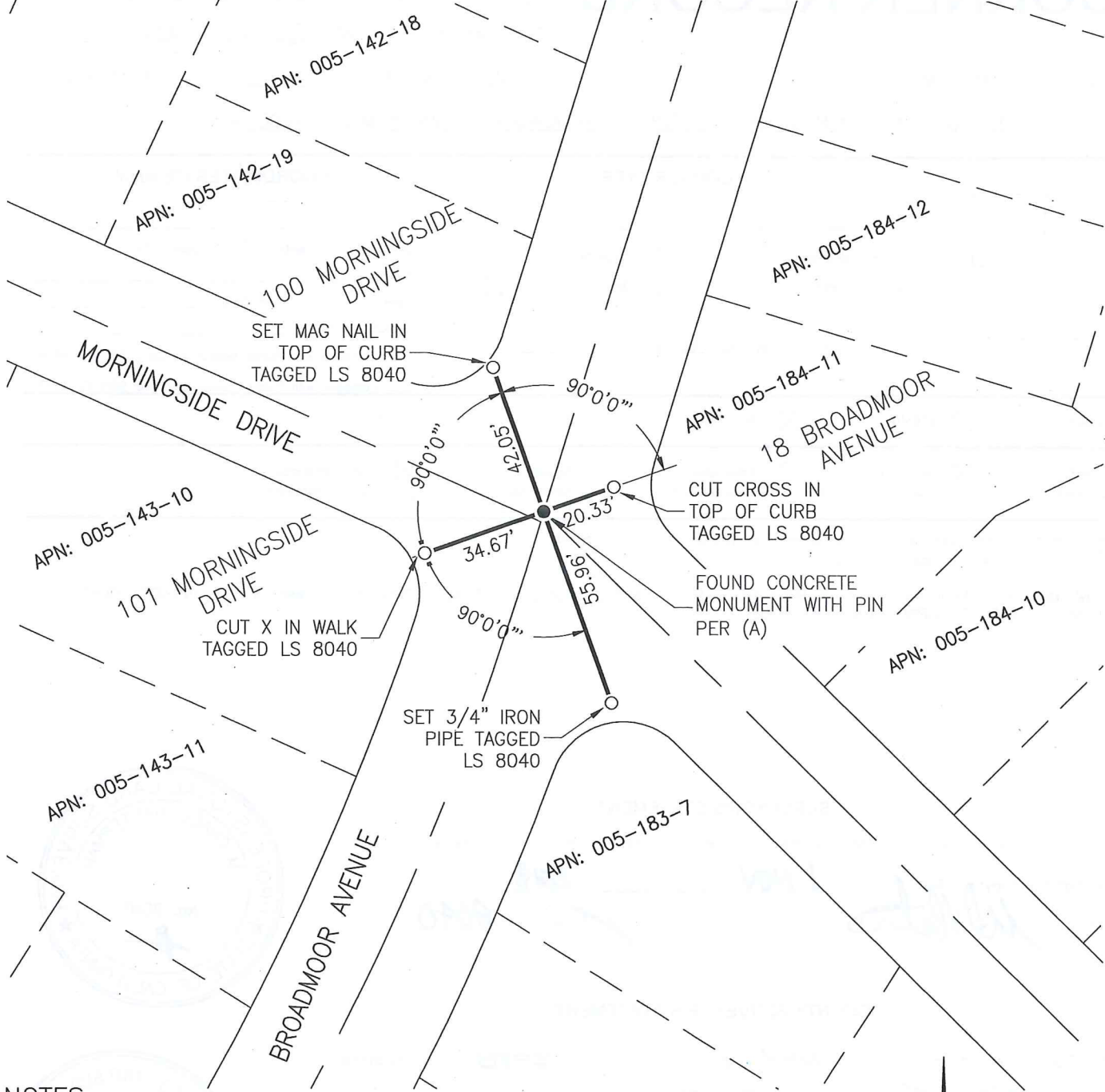
and filed NOV. 15, 2018.

Signed [Signature] P.L.S. or R.C.E. No.: 9292

Title DEPUTY C.S.

County Surveyor's Comment _____





NOTES

1. ALL DISTANCES SHOWN HEREON ARE IN U.S. SURVEY FEET AND DECIMALS THEREOF.

LEGEND:

- FOUND MONUMENT AS NOTED
- SET REFERENCE POINT AS NOTED
- (A) MAP OF MORNINGSIDE COURT VOLUME 5, PAGE 32

SCALE 1" = 40'

