

# CORNER RECORD

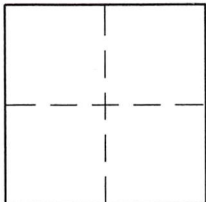
Agency Index 21-082

Document Number 005-141-19

City of SAN ANSELMO

County of MARIN, California

Brief Legal Description LOT 17, MORNINGSIDE COURT No. 1, 5 MAPS 32



### CORNER TYPE

Government Corner  Control   
Meander  Property   
Rancho  Other

Date of Survey 5/3/2021

### COORDINATES (Optional)

N. \_\_\_\_\_ E. \_\_\_\_\_  
Elevation \_\_\_\_\_  
Units Metric  U.S. Survey Foot   
Horizontal Datum \_\_\_\_\_  
Zone \_\_\_\_\_ Epoch Date \_\_\_\_\_  
Vertical Datum \_\_\_\_\_

Complies with Public Resources Code §§8801-8819

Complies with Public Resources Code §§8890-8902

PLS Act Ref:  8765(d)  8771  8773  Other:

Corner / Monument:  Left as found  Established  Rebuilt  Pre-Construction  
 Found and tagged  Reestablished  Referenced  Post-Construction

Narrative of corner identified and monument as found, set, reset, replaced, or removed:

See sheet #2 for description (s):

### SURVEYOR'S STATEMENT

This Corner Record was prepared by me or under my direction in conformance with the Professional Land Surveyors' Act on 5/17/2021

Signed [Signature] P.L.S. or R.C.E. No. 8475



### COUNTY SURVEYOR'S STATEMENT

This Corner Record was received 05/20/2021

and examined and filed 07/19/2021

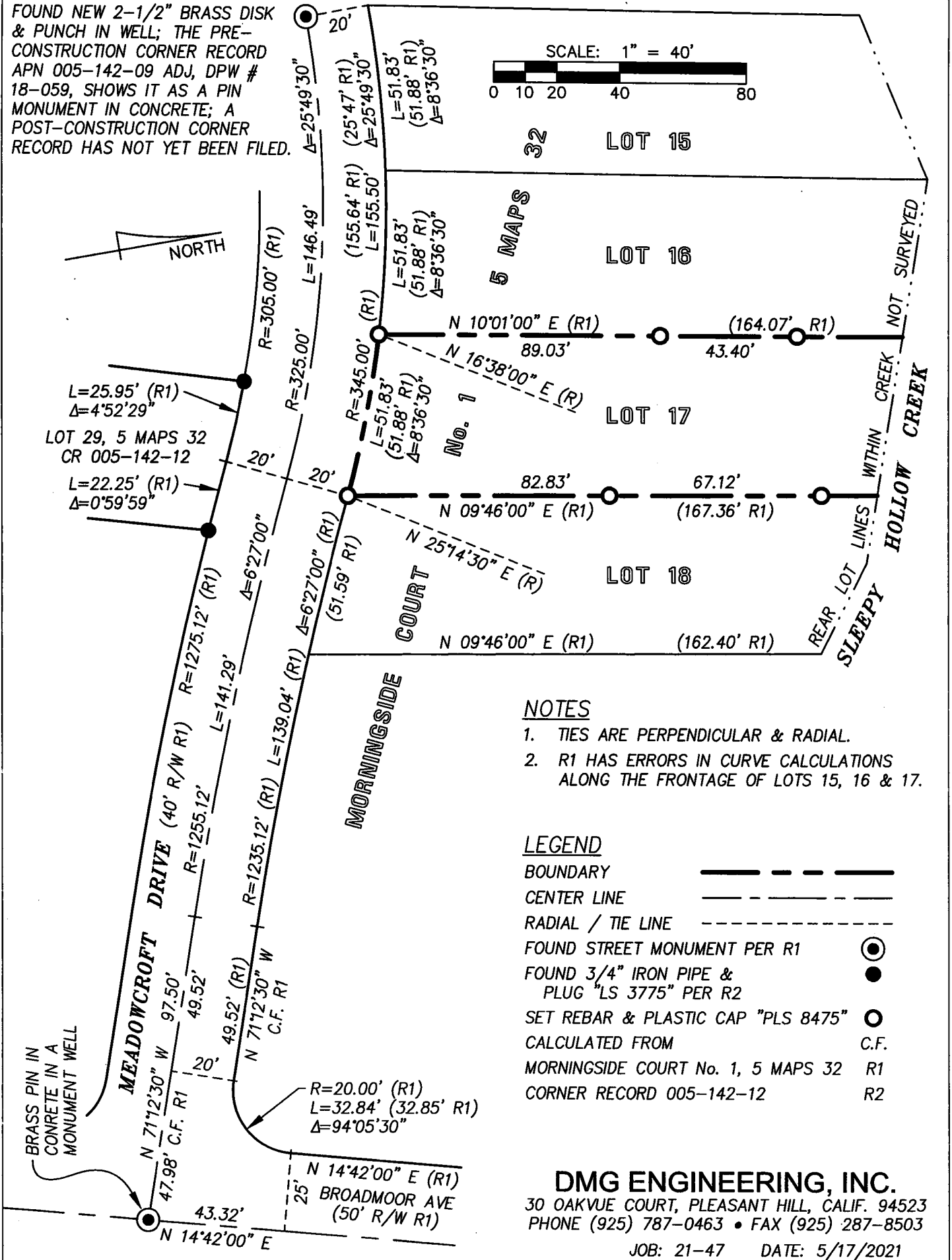
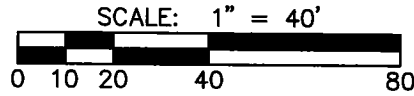
Signed [Signature] P.L.S. or R.C.E. No. 9292

Title DEPUTY



County Surveyor's Comment \_\_\_\_\_

FOUND NEW 2-1/2" BRASS DISK & PUNCH IN WELL; THE PRE-CONSTRUCTION CORNER RECORD APN 005-142-09 ADJ, DPW # 18-059, SHOWS IT AS A PIN MONUMENT IN CONCRETE; A POST-CONSTRUCTION CORNER RECORD HAS NOT YET BEEN FILED.



**NOTES**

1. TIES ARE PERPENDICULAR & RADIAL.
2. R1 HAS ERRORS IN CURVE CALCULATIONS ALONG THE FRONTAGE OF LOTS 15, 16 & 17.

**LEGEND**

BOUNDARY	—————
CENTER LINE	—————
RADIAL / TIE LINE	-----
FOUND STREET MONUMENT PER R1	⊙
FOUND 3/4" IRON PIPE & PLUG "LS 3775" PER R2	●
SET REBAR & PLASTIC CAP "PLS 8475"	○
CALCULATED FROM	C.F.
MORNINGSIDE COURT No. 1, 5 MAPS 32	R1
CORNER RECORD 005-142-12	R2

**DMG ENGINEERING, INC.**

30 OAKVUE COURT, PLEASANT HILL, CALIF. 94523  
 PHONE (925) 787-0463 • FAX (925) 287-8503

JOB: 21-47 DATE: 5/17/2021