

CORNER RECORD

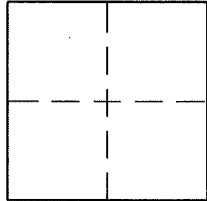
Agency Index 21-082

Document Number 005-141-18

City of SAN ANSELMO

County of MARIN, California

Brief Legal Description LOT 17, MORNINGSIDE COURT No. 1, 5 MAPS 32



CORNER TYPE

Government Corner Control
Meander Property
Rancho Other

Date of Survey 5/3/2021

COORDINATES (Optional)

N. _____ E. _____

Elevation _____

Units Metric U.S. Survey Foot

Horizontal Datum _____

Zone _____ Epoch Date _____

Vertical Datum _____

Complies with Public Resources Code §§8801-8819

Complies with Public Resources Code §§8890-8902

PLS Act Ref: 8765(d) 8771 8773 Other:

Corner / Monument: Left as found Established Rebuilt Pre-Construction
 Found and tagged Reestablished Referenced Post-Construction

Narrative of corner identified and monument as found, set, reset, replaced, or removed:

See sheet #2 for description (s):

SURVEYOR'S STATEMENT

This Corner Record was prepared by me or under my direction in conformance with the Professional Land Surveyors' Act on 4/8/21

Signed [Signature] P.L.S. or R.C.E. No. 8475



COUNTY SURVEYOR'S STATEMENT

This Corner Record was received 5-20-21

and examined and filed 1-31-22

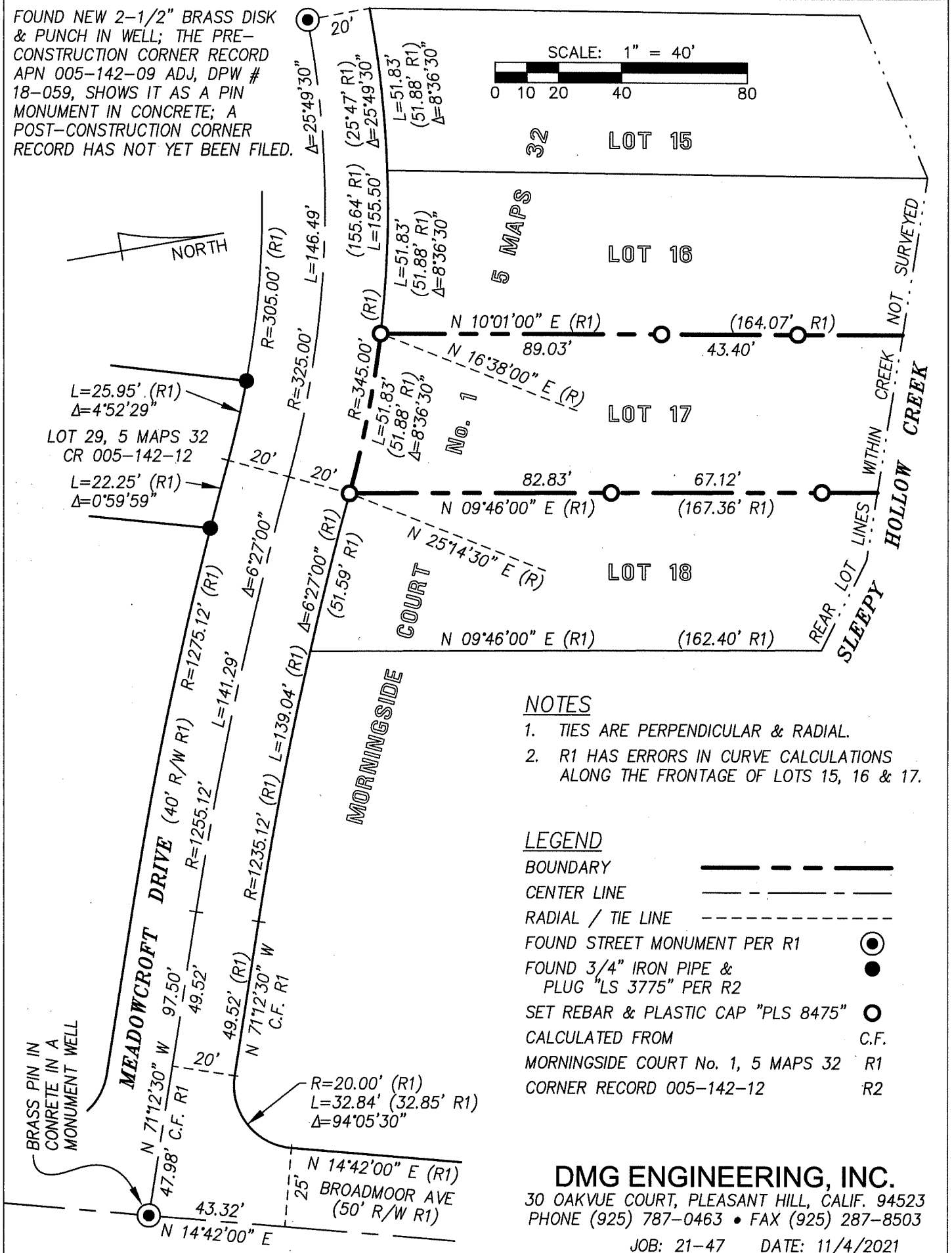
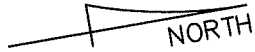
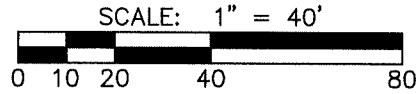
Signed [Signature] P.L.S. or R.C.E. No. 9292

Title DEPUTY

County Surveyor's Comment _____



FOUND NEW 2-1/2" BRASS DISK & PUNCH IN WELL; THE PRE-CONSTRUCTION CORNER RECORD APN 005-142-09 ADJ, DPW # 18-059, SHOWS IT AS A PIN MONUMENT IN CONCRETE; A POST-CONSTRUCTION CORNER RECORD HAS NOT YET BEEN FILED.



NOTES

1. TIES ARE PERPENDICULAR & RADIAL.
2. R1 HAS ERRORS IN CURVE CALCULATIONS ALONG THE FRONTAGE OF LOTS 15, 16 & 17.

LEGEND

| | |
|--|-------|
| BOUNDARY | ————— |
| CENTER LINE | ————— |
| RADIAL / TIE LINE | ----- |
| FOUND STREET MONUMENT PER R1 | ⊙ |
| FOUND 3/4" IRON PIPE & PLUG "LS 3775" PER R2 | ● |
| SET REBAR & PLASTIC CAP "PLS 8475" | ○ |
| CALCULATED FROM | C.F. |
| MORNINGSIDE COURT No. 1, 5 MAPS 32 | R1 |
| CORNER RECORD 005-142-12 | R2 |

DMG ENGINEERING, INC.
 30 OAKVUE COURT, PLEASANT HILL, CALIF. 94523
 PHONE (925) 787-0463 • FAX (925) 287-8503
 JOB: 21-47 DATE: 11/4/2021