

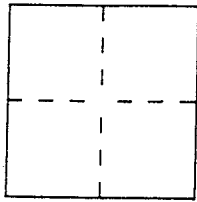
# CORNER RECORD

Document Number A.P. # 5-131-05

City of San Anselmo

County of Marin, California

Brief Legal Description Assessor's Parcel # 5-131-05  
124 Brookmead Ct., San Anselmo, CA 94960



### CORNER TYPE

Government Corner  Control   
Meander  Property   
Rancho  Other   
Date of Survey \_\_\_\_\_

### COORDINATES (Optional)

N. \_\_\_\_\_  
E. \_\_\_\_\_  
Zone \_\_\_\_\_ Datum \_\_\_\_\_  
Elev. \_\_\_\_\_

Corner — Left as found  Found and tagged  Established  Reestablished  Rebuilt

Identification and type of corner found: Evidence used to identify or procedure used to establish or reestablish the corner:

Found Standard Subdivision Street Monuments  
per 6 RM 47

A description of the physical condition of the monument as found and as set or reset:

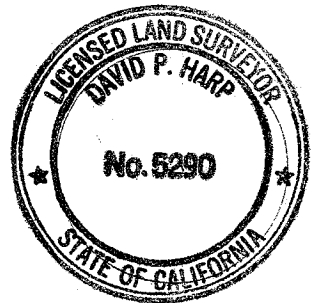
Set Points shown on Sub Map (Over)

### SURVEYOR'S STATEMENT

This Corner Record was prepared by me or under my direction in conformance with

the Land Surveyors' Act on July 15 1996.

Signed David P. Harp L.S. or R.C.E. Number LS 5290



### COUNTY SURVEYOR'S STATEMENT

This Corner Record was received JULY 16 1996 and examined

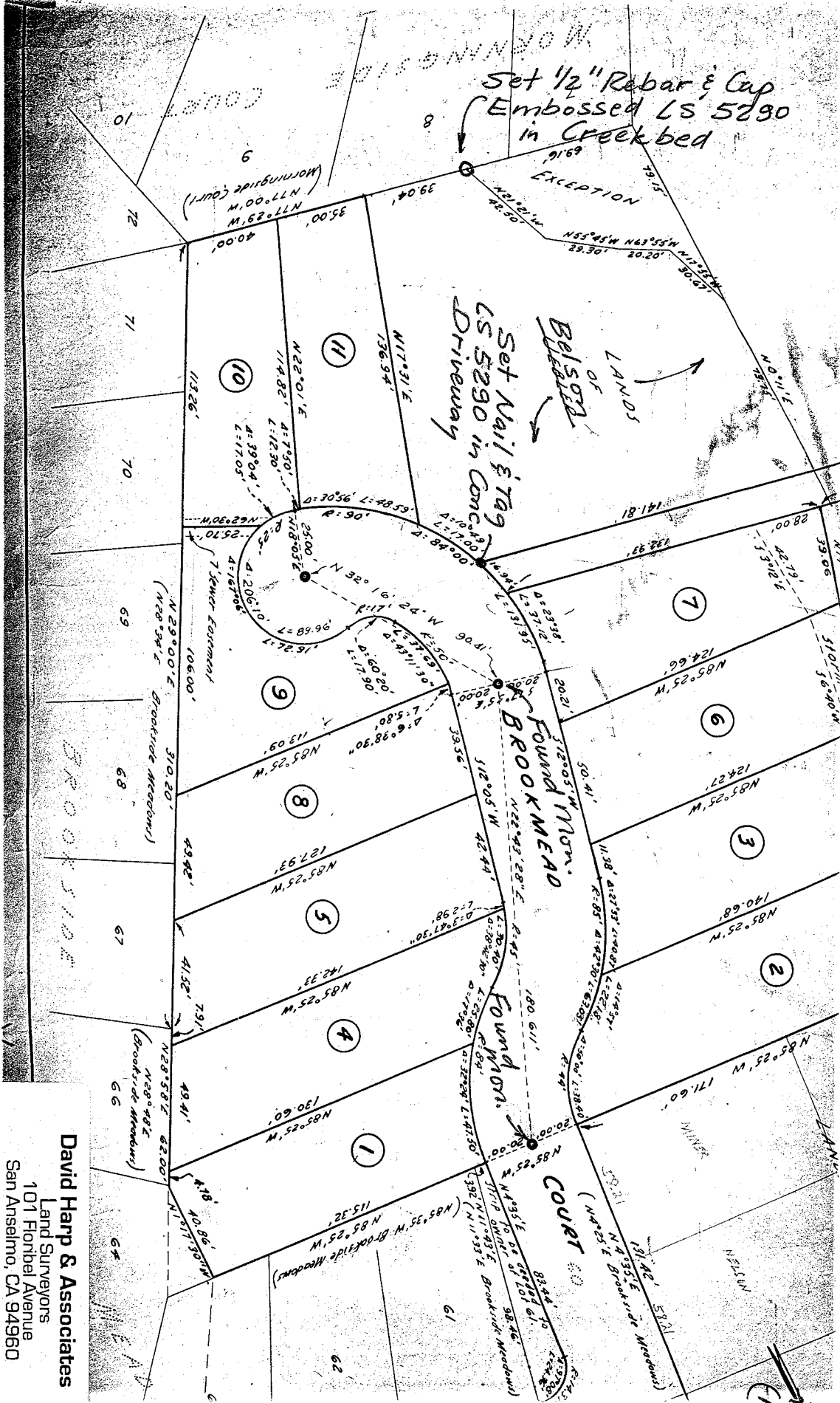
and filed 7-17 1996.

Signed [Signature] Title CS



County Surveyor's Comment \_\_\_\_\_

6 R.M. 47



(No Scale)

**David Harp & Associates**  
 Land Surveyors  
 101 Florbel Avenue  
 San Anselmo, CA 94960  
 415-453-7624