

L. A. Stevens & Associates, Inc.  
Professional Land Surveyors  
Novato, California

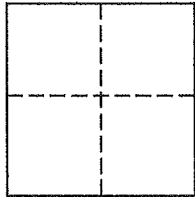
**Lands of Long**  
**Job #: 161756**

**CORNER RECORD**

Document Number 005-129-11

Town of San Anselmo in County of Marin, California

Brief Legal Description: Lot 10, Block 7, as shown upon that certain Map entitled "Map of Hawthorn Hills, Marin Co. Cal." Filed for record April 9, 1920, in Volume 5 of Maps, at Page 9, Marin County Records.



**CORNER TYPE**

**COORDINATES (Optional)**

Government Corner  Control   
Meander  Property   
Rancho  Other

N \_\_\_\_\_  
E \_\_\_\_\_  
Zone \_\_\_\_\_ NAD27  NAD83   
NAD 83 Epoch \_\_\_\_\_  
Elev. \_\_\_\_\_  
Vert. Datum: NGVD29  NAVD88   
Meas. Units: Metric  Imperial

Date of Survey June 23, 2016

**Corner -** Left as found  Found and tagged  Established  Reestablished  Rebuilt

Identification and type of corner found: Evidence used to identify or procedure used to establish or reestablish the corner:  
See Page 2 of 2 for additional information

A description of the physical condition of the monument as found and as set or reset:  
See Page 2 of 2 for additional information

**SURVEYOR'S STATEMENT**

This Corner Record was prepared by me or under my direction in conformance with  
The Land Surveyor's Act on July 5, 2016.

Signed [Signature] P.L.S. 6649



**COUNTY SURVEYOR'S STATEMENT**

This Corner Record was received July 8, 2016

and examined and filed 1/19/2017

Signed T.W. Park P.L.S. or R.C.E. No. 8176

Title COUNTY SURVEYOR

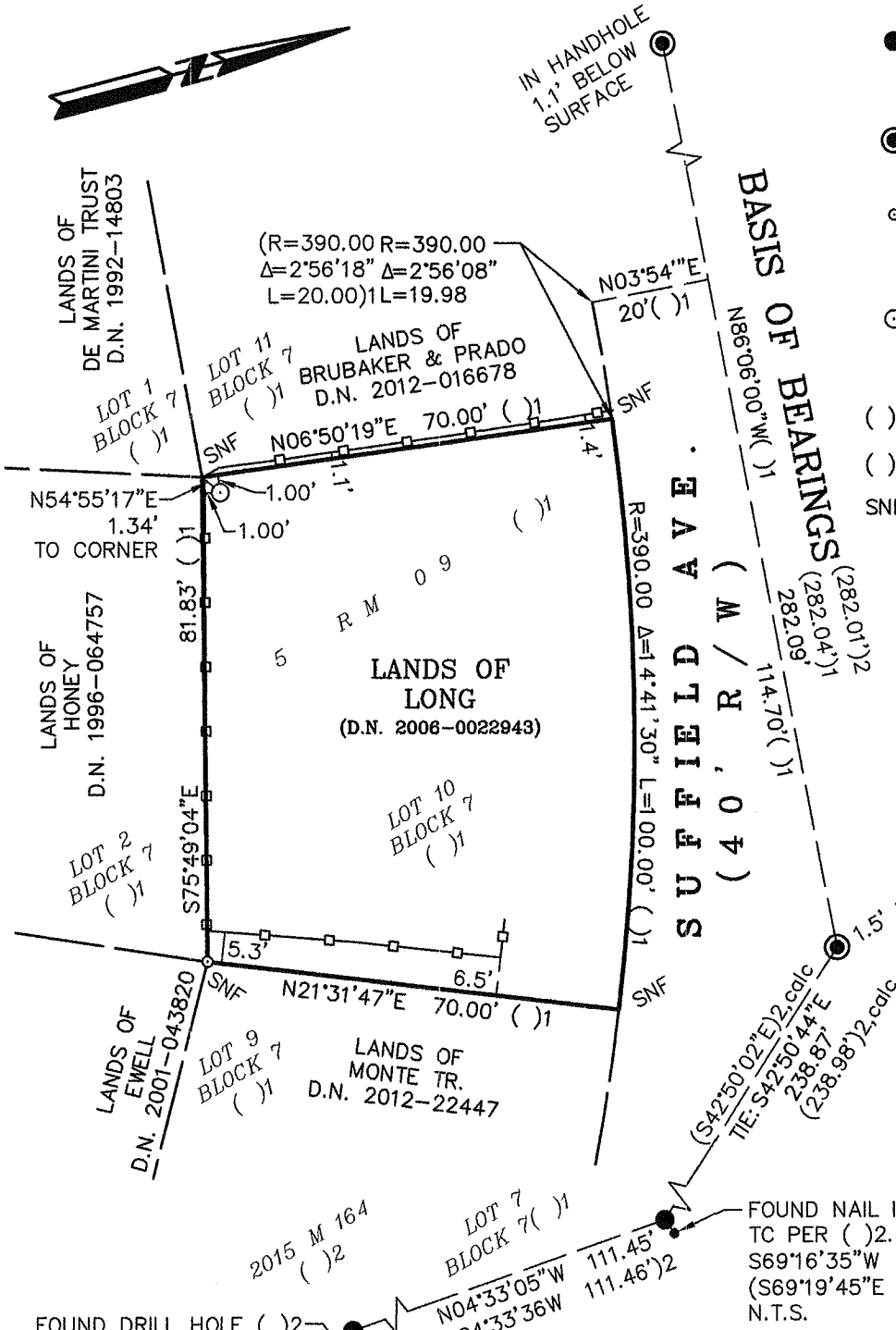
County Surveyors' Comment \_\_\_\_\_



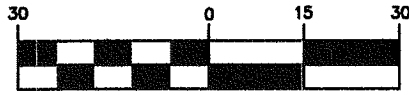
All distances shown are in feet and decimals thereof

# LEGEND

- Found Rebar & 1 1/2" Aluminum Cap with Punch, Stamped, "PETER RING PLS 8953"
- ⊙ Found 1" Diameter Iron Monument
- Set Nail & 1 1/2" Diameter Brass Washer, Stamped "LS 6649" in Asphalt
- ⊙ Set 5/8" Rebar & 1 1/2" Aluminum Cap with Punch, Stamped "PLS 6649"
- ( ) 1 5 RM 9
- ( ) 2 2015 ROS 164
- SNF Searched Area Nothing Found



## GRAPHIC SCALE



( IN FEET )

## Corner Record Lands of Long

(D.N. 20016-0022943)

(Lot 10, Block 7, Volume 5 of Map, Page 9)

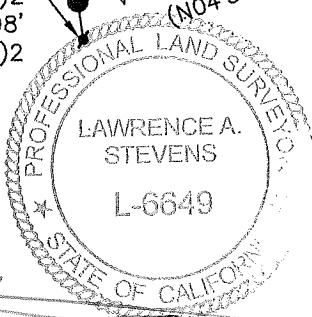
San Anselmo Marin County California  
Scale: 1" = 30' July 2016

**L.A. Stevens & Associates, Inc.**

Professional Land Surveyors \* (415) 382-7713  
7 Commercial Blvd., Suite 1 \* Novato, CA 94949

Job # 161756

Page 2 Of 2



Lawrence A. Stevens, PLS 6649

Copyright © Lawrence A. Stevens 2016

11-30-16

*[Handwritten signature]*