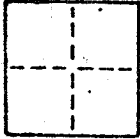


CORNER RECORD

COUNTY OF MARIN T. _____ R. _____ MERIDIAN CALIFORNIA

CORNER TYPE: GOVT. CORNER MEANDER RANCHO CONTROL OTHER

CORNER IDENTIFICATION — DATE OF VISIT _____ 19__



CORNER — LEFT AS FOUND FOUND AND TAGGED REESTABLISHED OBLITERATED CORNER REBUILT

PHYSICAL DESCRIPTION OF CORNER FOUND; EVIDENCE AND METHOD USED TO IDENTIFY OR REESTABLISH

Set a 3/4" iron pipe with plastic plug embossed "LS 3775" at the southeastern corner of Official Records Document No. 86-008494, per said document; which document makes reference to "Map of Hawthorn Hills, Marin County, California"; Recorded in book 5 of maps at page 9 Marin County Records the monumentation of which has been herein utilized.

PHYSICAL DESCRIPTION OF MONUMENTS REBUILT OR PERPETUATED

As shown

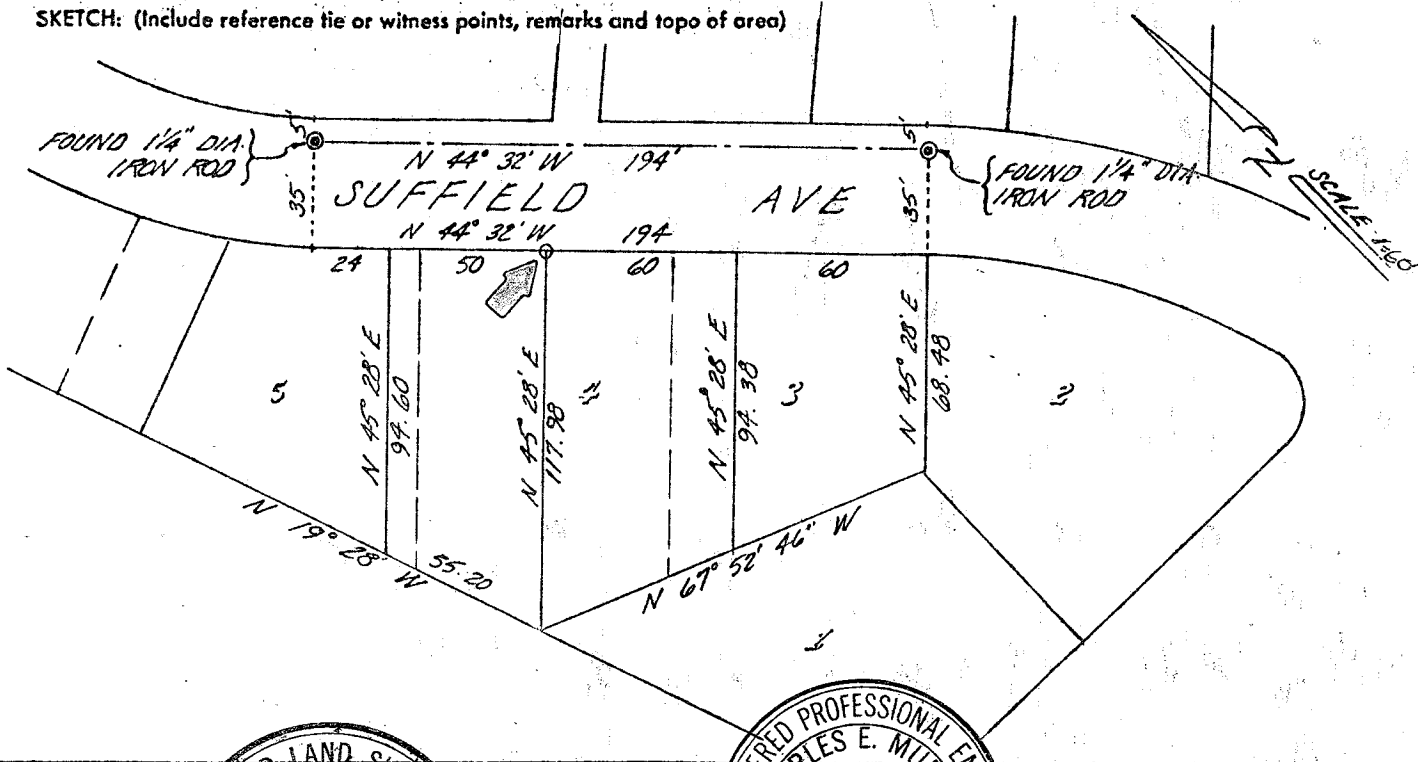
AP No. 5-121-11
Ruggeri J-1554

CALIFORNIA COORDINATE SYSTEM ORDER: FIRST SECOND THIRD

STATIONS USED: NGS (USC & GS) STATE COUNTY OTHER STATION _____ STATION _____

ZONE _____ ELEVATION _____ NORTHINGS (Y) _____ EASTINGS (X) _____

SKETCH: (Include reference tie or witness points, remarks and topo of area)



REGISTERED LAND SURVEYOR'S CERTIFICATE

THIS CORNER RECORD WAS PREPARED BY ME OR UNDER MY DIRECTION IN CONFORMANCE WITH THE LAND SURVEYORS ACT ON 25 March 1987

No. 3775

SIGNATURE: *[Signature]*

L.S. of R.C.E. No. 3775

License of CALIFORNIA 12-31-87

SEAL

REGISTERED PROFESSIONAL ENGINEER'S SURVEYOR'S CERTIFICATE

THE CORNER RECORD WAS RECEIVED _____ 19__

AND EXAMINED AND FILED 7-20 1987

Exp. 6-30-89 BY: *[Signature]*

CIVIL ENGINEER

STATE OF CALIFORNIA

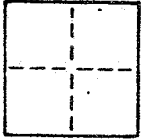
STATEMENT ON BACK OF SHEET YES NO

CORNER RECORD

COUNTY OF MARIN T. _____ R. _____ MERIDIAN _____ CALIFORNIA

CORNER TYPE: GOVT. CORNER MEANDER RANCHO CONTROL OTHER

CORNER IDENTIFICATION — DATE OF VISIT _____ 19__



CORNER — LEFT AS FOUND FOUND AND TAGGED REESTABLISHED OBLITERATED CORNER REBUILT

PHYSICAL DESCRIPTION OF CORNER FOUND; EVIDENCE AND METHOD USED TO IDENTIFY OR REESTABLISH

Set a brass tag embossed "LS 3775" in the top of a brick wall at the most northerly corner of Official Records Document No. 86-008494, per said document; which document makes reference to "Map of Hawthorn Hills, Marin County, California", Recorded in book 5 of maps at page 9, Marin County Records the monumentation of which has been herein utilized.

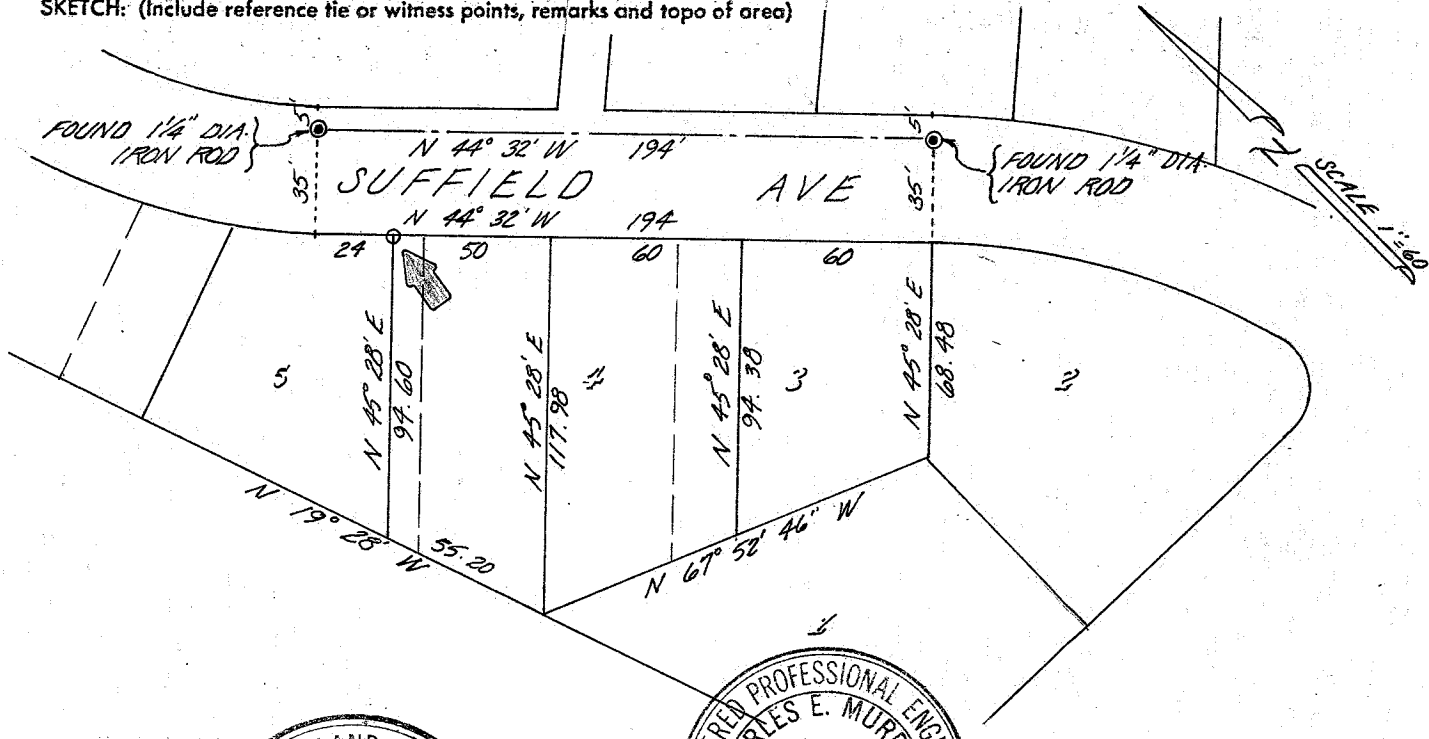
PHYSICAL DESCRIPTION OF MONUMENTS REBUILT OR PERPETUATED

As shown

AP No. 5-121-11
Ruggeri J-1554

CALIFORNIA COORDINATE SYSTEM ORDER: FIRST SECOND THIRD
 STATIONS USED: NGS (USC & GS) STATE COUNTY OTHER STATION _____ STATION _____
 ZONE _____ ELEVATION _____ NORTHINGS (Y) _____ EASTINGS (X) _____

SKETCH: (Include reference tie or witness points, remarks and topo of area)



SURVEYOR'S CERTIFICATE
 THIS CORNER RECORD WAS PREPARED BY ME OR UNDER MY DIRECTION IN CONFORMANCE WITH THE LAND SURVEYORS ACT ON 25 March 1987
 SIGNED: Joseph Griff
 L.S. or R.C.E. No. 87375, License Expires 12-31-87

REGISTERED PROFESSIONAL ENGINEER
 CHARLES E. MURPHY
 CIVIL
 STATE OF CALIFORNIA
 THE CORNER RECORD WAS RECEIVED AND EXAMINED AND FILED 2-20 1987
 DATE: 047 Co. 501X

STATEMENT ON BACK OF SHEET YES NO 2 of 2