

CORNER RECORD

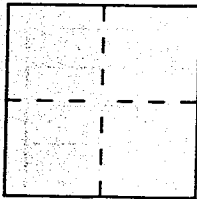


JERRICO ASSOCIATES  
SUITE 27  
77 MARK DRIVE  
SAN RAFAEL, CA 94903

AP 5-102-33 7035  
Document Number (177-220-04)

City of San Anselmo (Sleepy Hollow) County of Marin, California

Brief Legal Description Descriptive parcel, lands of Tobin 91-15067



CORNER TYPE

Government Corner  Control   
Meander  Property   
Rancho  Other   
Date of Survey August 1993

COORDINATES  
(Optional)

N. \_\_\_\_\_  
E. \_\_\_\_\_  
Zone \_\_\_\_\_ Datum \_\_\_\_\_  
Elev. \_\_\_\_\_

Corner — Left as found  Found and tagged  Established  Reestablished  Rebuilt

Identification and type of corner found: Evidence used to identify or procedure used to establish or reestablish the corner:  
Found points marking the northerly line of 20 P M 39 (Parcel 'A')  
Described below.

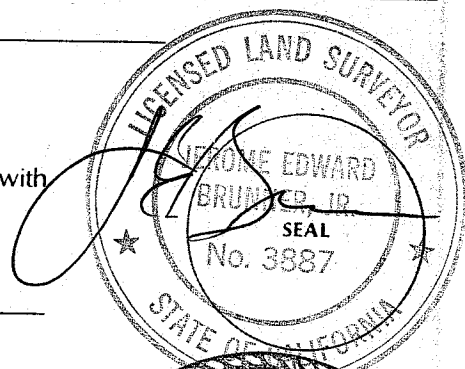
A description of the physical condition of the monument as found and as set or reset: \_\_\_\_\_

- (A) Found 1 1/4" iron pipe at N.W. corner of Pcl.'A'
- (B) Found 3/4" iron pipe & RCE 20597 at NE corner of Pcl.'A'

SURVEYOR'S STATEMENT

This Corner Record was prepared by me or under my direction in conformance with the Land Surveyors' Act on November 11 1993.

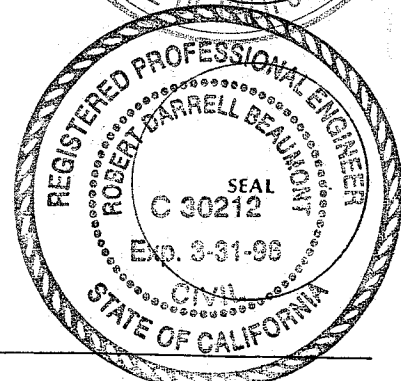
Signed [Signature] L.S. or R.C.E. Number LS 3887  
EX 6/30/94



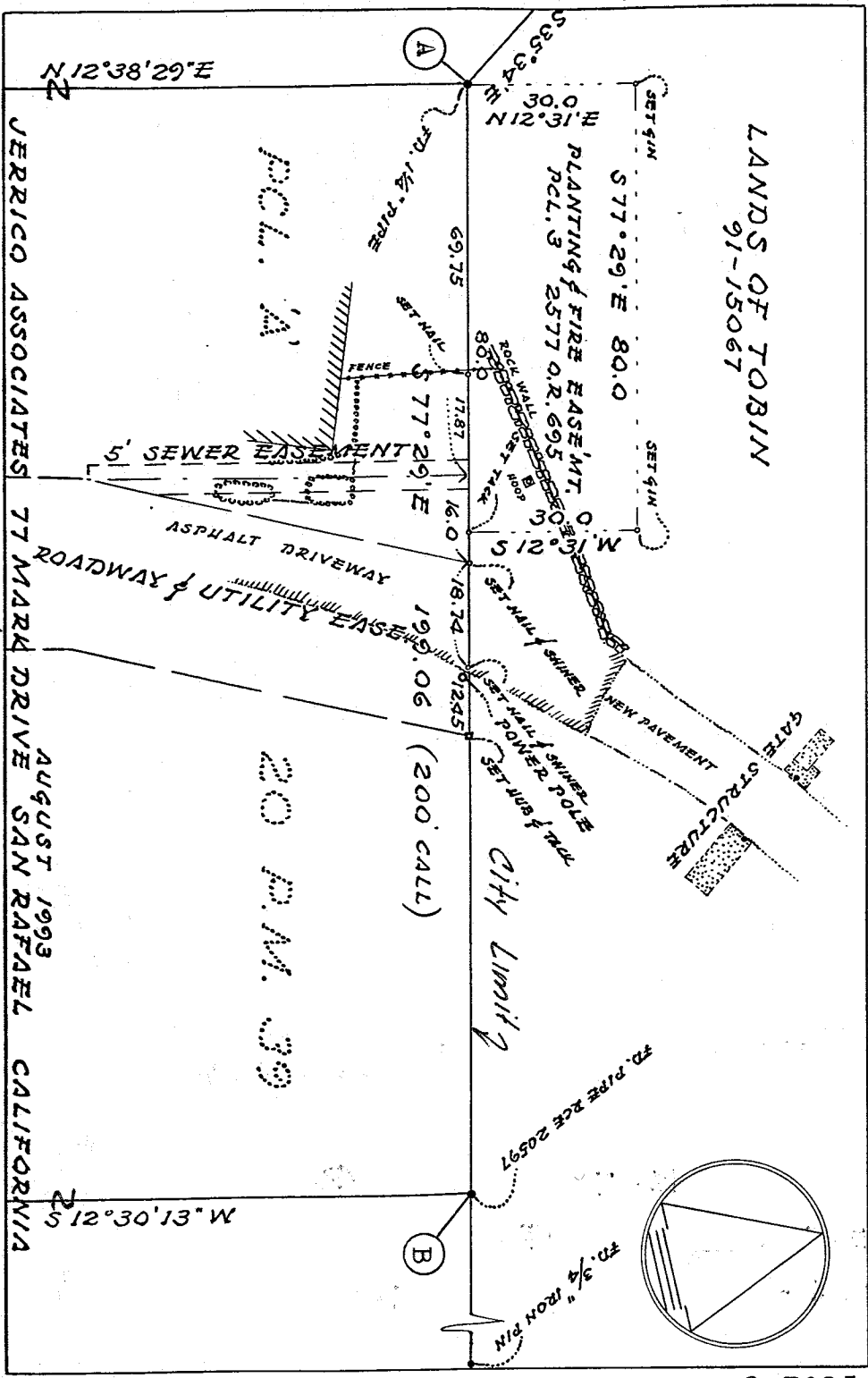
COUNTY SURVEYOR'S STATEMENT

This Corner Record was received 12-7 1993 and examined and filed 12-8 1993.

Signed [Signature] Title DCS



County Surveyor's Comment \_\_\_\_\_



LANDS OF TOBIN  
91-15067

JERRICO ASSOCIATES 77 MARK DRIVE SAN RAFAEL CALIFORNIA  
REV: NOV. 11, 1993 LOCATION OF ROCK WALL & DRIVEWAY.

N 12°38'29"E

S 12°30'13"W

PCL. 'A'

20 P.M. 39

(200 CALL)

City Limit

S-7035