

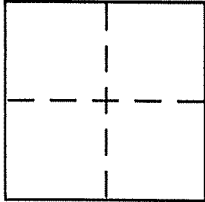
**CORNER RECORD**

TOWN City of SAN ANSELMO

Document Number A.P.N. 005-082-27/52

County of MARIN, California

Brief Legal Description PORTIONS OF LOTS 10, 11, 12 BLK. 4 PER S.P.M. 64  
(ALSO IS THE MERCEREAU PARCEL PER 14 P.M. 8)



**CORNER TYPE**

Government Corner  Control   
Meander  Property   
Rancho  Other   
Date of Survey SEPT. 16, 2004

**COORDINATES (Optional)**

N. \_\_\_\_\_  
E. \_\_\_\_\_  
Zone \_\_\_\_\_ NAD27  NAD83   
NAD83 Epoch \_\_\_\_\_  
Elev. \_\_\_\_\_  
Vert. Datum: NGVD29  NAVD88   
Meas. Units: Metric  Imperial

Corner - Left as found  Found and tagged  Established  Reestablished  Rebuilt

Identification and type of corner found: Evidence used to identify or procedure used to establish or reestablish the corner:

= SEE OVER =

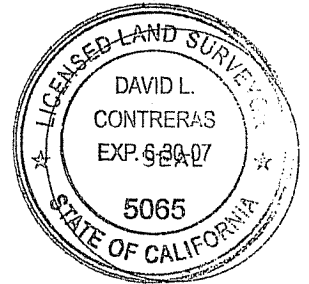
A description of the physical condition of the monument as found and as set or reset:

= SEE OVER =

(RE-SET NAIL & TAG AT MAJOR ANGLE POINT IN SOUTHERLY LINE AFTER WALL WAS REPLACED)

**SURVEYOR'S STATEMENT**

This Corner Record was prepared by me or under my direction in conformance with the Land Surveyor's Act on NOVEMBER 30 2004.  
Signed David Contreras P.L.S. or R.C.E. No. 5065

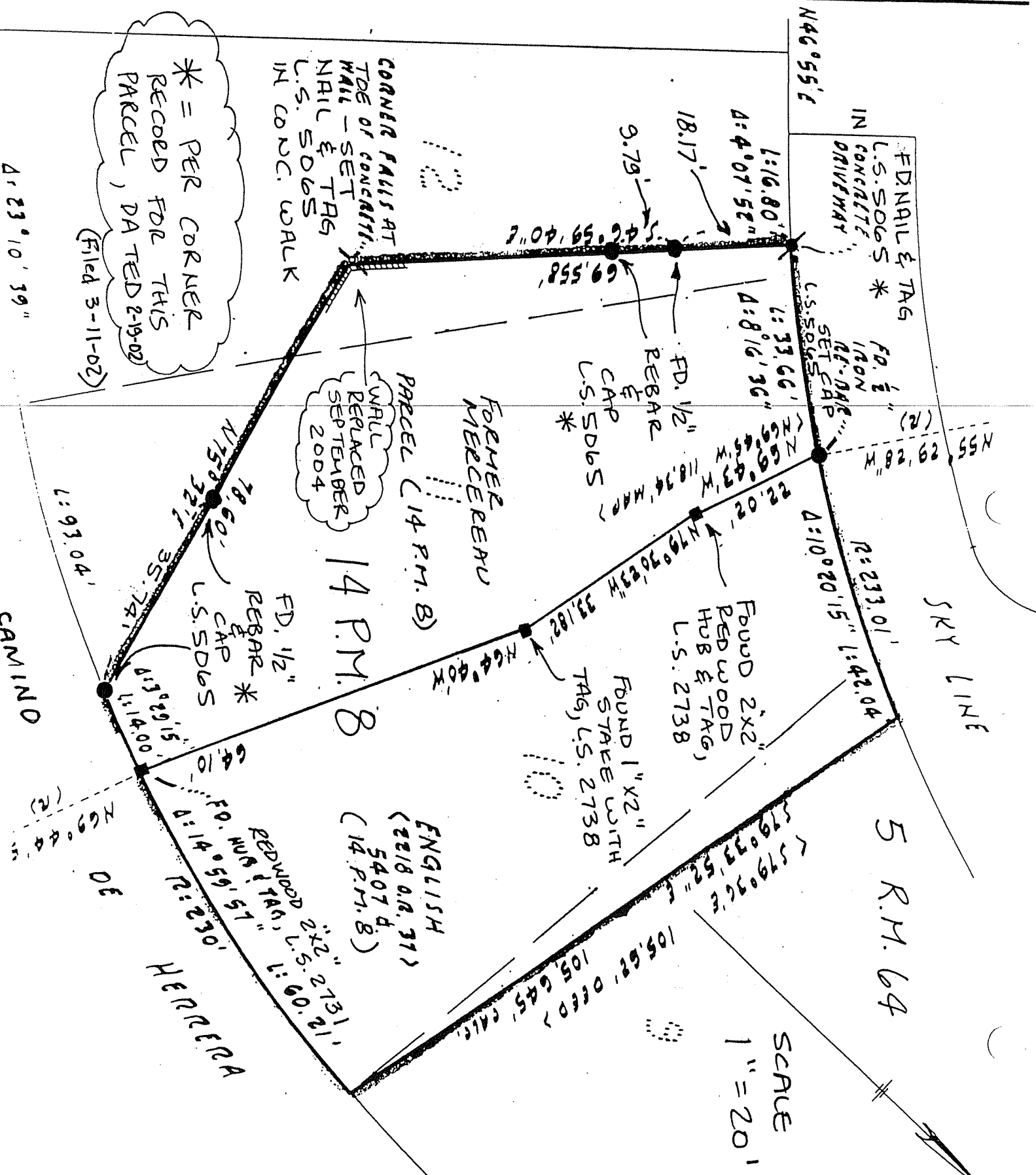


**COUNTY SURVEYOR'S STATEMENT**

This Corner Record was received 12-6-2004  
and examined and filed JANUARY 11, 2005  
Signed \_\_\_\_\_ P.L.S. or R.C.E. No. 7128  
Title COUNTY SURVEYOR



County Surveyor's Comment \_\_\_\_\_



N46°55'E

FD. NAIL & TAG  
L.S. SDBS \*  
IN CONCRETE  
DRIVEWAY

L: 16.80'  
Δ: 4°07'52"

18.17'

9.79'

69.558'

L: 33.66'  
Δ: 8°16'36"

FD. 1/2"  
REBAR  
&  
CAP  
L.S. SDBS \*

FD. 1/2"  
IRON  
NAIL  
SET CAP  
L.S. SDBS

N55°29'28"W  
29.128'

Δ: 10°20'15"  
R: 233.01'  
L: 42.04'

SKY LINE

FOUND 2"x2"  
RED WOOD  
HUB & TAG,  
L.S. 2738

FOUND 1"x2"  
STAKE WITH  
TAG, L.S. 2738

5 R.M. 64

14 P.M. 8

FORMER  
MERCERU  
PARCEL (14 P.M. B)

WALL  
REPLACED  
SEPTEMBER  
2004

ENGLISH  
(2218 A.R. 31)  
5407 D.  
(14 P.M. B)

\* = PER CORNER  
RECORDED FOR THIS  
PARCEL, DATED 2-19-02  
(Filed 3-11-02)

CORNER FALLS AT  
TOE OF CONCRETE  
WALL - SET  
NAIL & TAG  
L.S. SDBS  
IN CONC. WALK

Δ: 23°10'39"

L: 93.04'

CAMINO

HERPERRA

SCALE  
1" = 20'

