

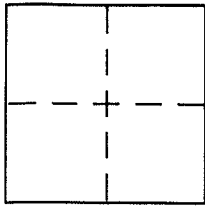
CORNER RECORD

TOWN SAN ANSELMO
City of

Document Number A.P.N. 005-082-27/52

County of MARIN, California

Brief Legal Description PORTIONS OF LOTS 10, 11, 12, BLOCK 4 PER 5 R.M. 64
(ALSO IS THE MERCEREAU PARCEL PER 14 P.M. 8)



CORNER TYPE

Government Corner Control
Meander Property
Rancho Other
Date of Survey JAN. 17, 2002

COORDINATES (Optional)

N. _____
E. _____
Zone _____ NAD27 NAD83
NAD83 Epoch _____
Elev. _____
Vert. Datum: NGVD29 NAVD88
Meas. Units: Metric Imperial

Corner - Left as found Found and tagged Established Reestablished Rebuilt

Identification and type of corner found: Evidence used to identify or procedure used to establish or reestablish the corner:

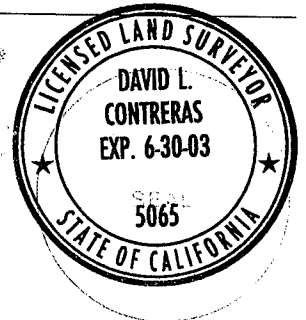
= SEE OVER =

A description of the physical condition of the monument as found and as set or reset:

= SEE OVER =

SURVEYOR'S STATEMENT

This Corner Record was prepared by me or under my direction in conformance with the Land Surveyor's Act on FEB. 19 2002
Signed David Contreras P.L.S or R.C.E. No. 5065

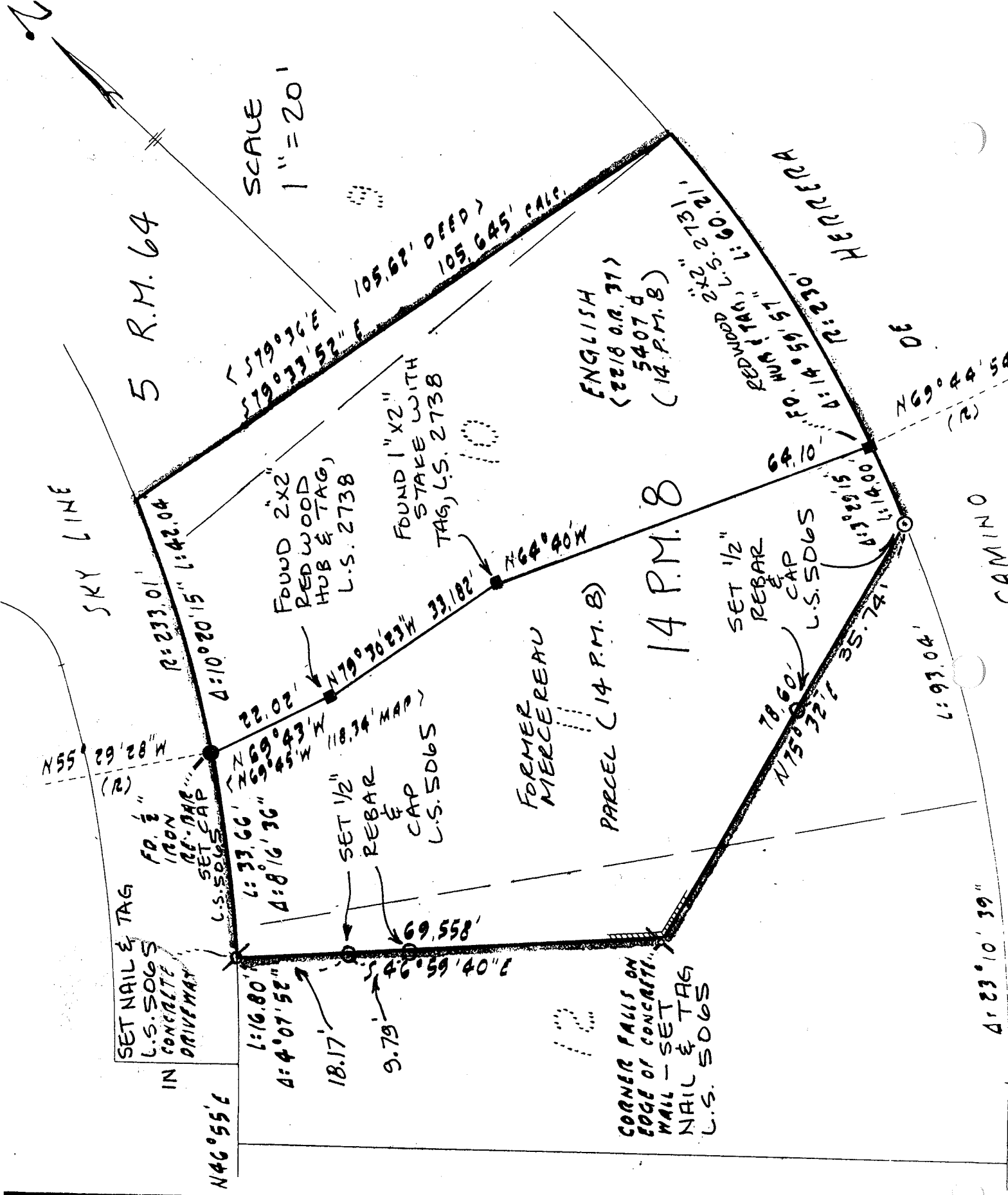


COUNTY SURVEYOR'S STATEMENT

This Corner Record was received MARCH 8, 2002
and examined and filed MARCH 11, 2002
Signed Craig Tackabery P.L.S or R.C.E. No. 7128
Title DEPUTY



County Surveyor's Comment _____



5 R.M. 64

SCALE
1" = 20'

SKY LINE

SET NAIL & TAG
L.S. 5065
IN CONCRETE
DRIVEWAY

N46°55'E

N55°29'28"W
(R)

FD. 1/2"
IRON
REBAR
SET CAP
L.S. 5065

L: 16.80'
A: 4°07'52"

18.17'

9.79'

SET 1/2"
REBAR
&
CAP
L.S. 5065

L: 33.66'
A: 8°16'36"

L: 22.02'
A: 79°30'23"W

FOUND 2x2
REDWOOD
HUB & TAG
L.S. 2738

FOUND 1" x 2"
STAKE WITH
TAG, L.S. 2738

FORMER
MERCEREAU

PARCEL (14 P.M. 8)

14 P.M. 8

CORNER FALLS ON
EDGE OF CONCRETE
WALL - SET
NAIL & TAG
L.S. 5065

SET 1/2"
REBAR
&
CAP
L.S. 5065

L: 78.60'
A: 75°03'32"E

L: 35.741'

105.62' DEED
105.645' CALC.

ENGLISH
(2218 O.R. 31)
5407 d
(14 P.M. 8)

L: 105.62'
A: 22°27'13"

FOUND 2x2
REDWOOD
HUB & TAG
L.S. 2738

L: 69.10'

H 23 22 28 H

DE

N69°44'58"
(R)

CAMINO

L: 93.04'

A: 23°10'39"