

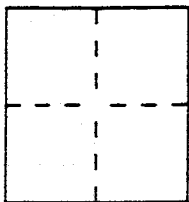
# CORNER RECORD

Document Number A.P.N. 05-081-01

Town SAN ANSELMO  
City of SAN ANSELMO

County of MARIN, California

Brief Legal Description LOT 17, BLOCK 1, 5 RM 64



### CORNER TYPE

Government Corner  Control   
Meander  Property   
Rancho  Other   
Date of Survey \_\_\_\_\_

### COORDINATES (Optional)

N. \_\_\_\_\_  
E. \_\_\_\_\_  
Zone \_\_\_\_\_ Datum \_\_\_\_\_  
Elev. \_\_\_\_\_

Corner — Left as found  Found and tagged  Established  Reestablished  Rebuilt

Identification and type of corner found: Evidence used to identify or procedure used to establish or reestablish the corner:

Monument at northeast corner of lot 17 and northeast corner of 17A per 4 PM 55 were found and held for basis of bearing. (see page 2)

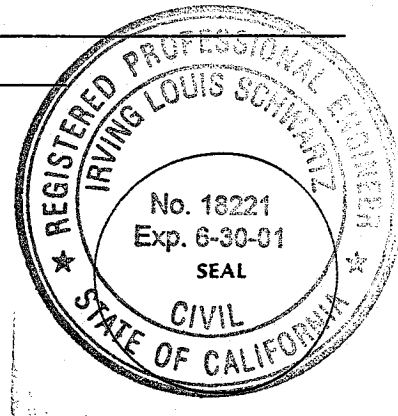
A description of the physical condition of the monument as found and as set or reset: \_\_\_\_\_

Set 3/4" iron pipe with tag RCE 18221 on the remaining three corners of Lot 17.

### SURVEYOR'S STATEMENT

This Corner Record was prepared by me or under my direction in conformance with the Land Surveyors' Act on 2-02 1998.

Signed [Signature] or R.C.E. Number 18221



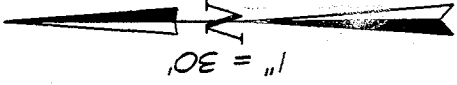
### COUNTY SURVEYOR'S STATEMENT

This Corner Record was received FEBRUARY 4 1998 and examined and filed FEBRUARY 6 1998.

Signed [Signature] Title DEPUTY

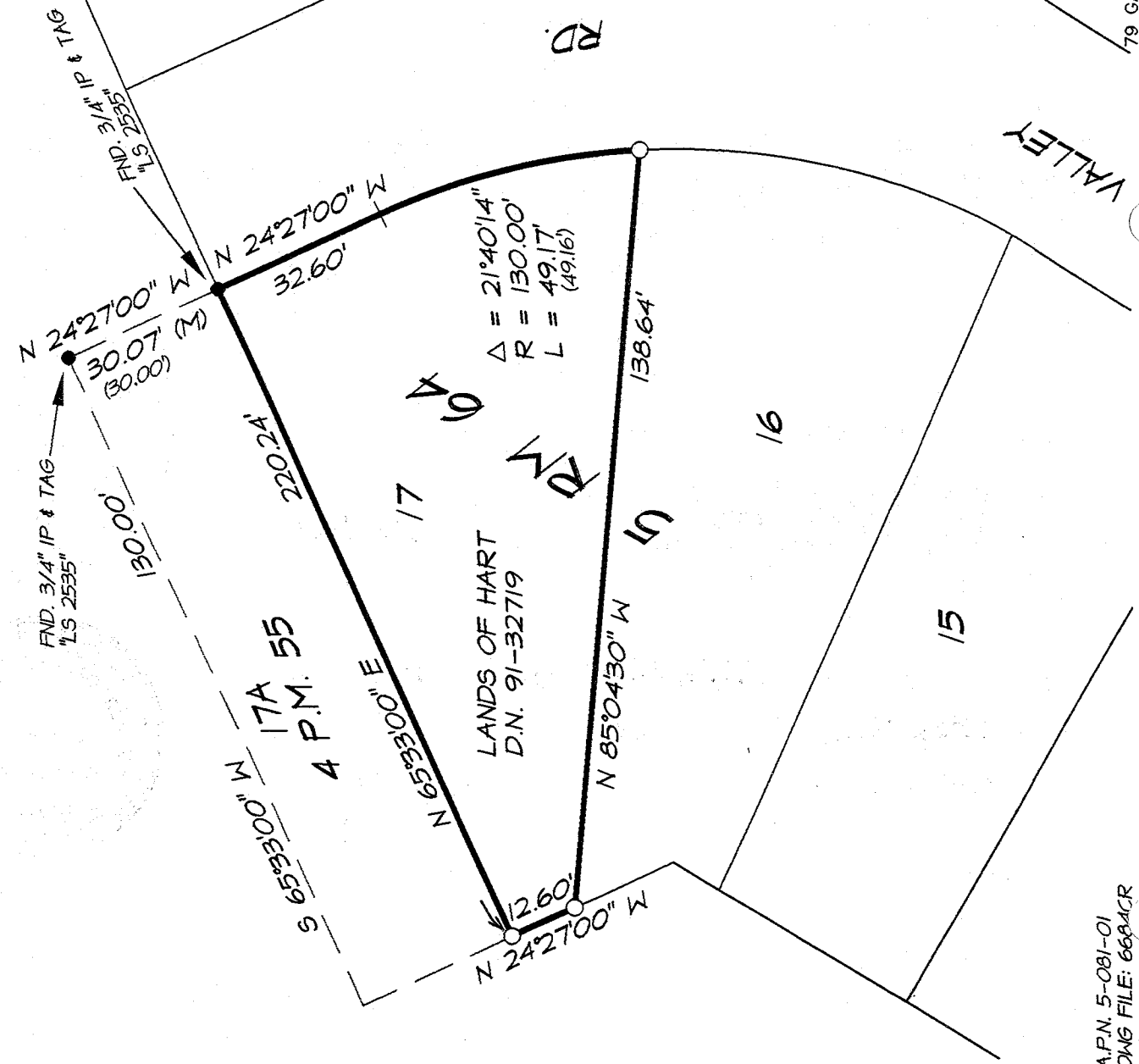


County Surveyor's Comment \_\_\_\_\_



**LEGEND:**

- SET 3/4" IRON PIPE  
W/ TAG "RCE 18221"
- FOUND MONUMENT  
AS SHOWN
- ( ) RECORD DATA



**I.L. SCHWARTZ ASSOCIATES, INC.®**  
CIVIL ENGINEERING AND LAND SURVEYING

79 GALLI DRIVE NOVATO, CA 94949 (415)883-9200 FAX 883-2763

A.P.N. 5-081-01  
DWG FILE: 6684CR  
DWG DSK: 29