

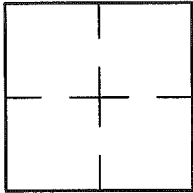
CORNER RECORD

Document Number A.P.# 005-071-68

City of SAN ANSELMO

County of MARIN, California

Brief Legal Description 2007 M. 106



CORNER TYPE COORDINATES (Optional)

Government Corner  Control   
Meander  Property   
Rancho  Other   
Date of Survey 05/28/15

N. \_\_\_\_\_  
E. \_\_\_\_\_  
Zone \_\_\_\_\_ NAD27  NAD83   
NAD83 Epoch \_\_\_\_\_  
Elev. \_\_\_\_\_  
Vert. Datum: NGVD29  NAVD88   
Meas. Units: Metric  Imperial

Corner- Left as found  Found and tagged  Established  Reestablished  Rebuilt

Identification and type of corner found: Evidence used to identify or procedure used to establish or reestablish the corner:  
REESTABLISHED THE SOUTHEASTERLY LINE OF THE LANDS OF CALICCHIO, PER 2007 M. 106  
AS SHOWN ON SHEET 2.

A description of the physical condition of the monument as found and as set or reset: SEE SHEET 2.

SURVEYOR'S STATEMENT

This Corner Record was prepared by me or under my direction in conformance with  
the Land Surveyor's Act on MAY 28 2015  
Signed Lawrence P Doyle P.L.S. or R.C.E. No. P.L.S. 4694

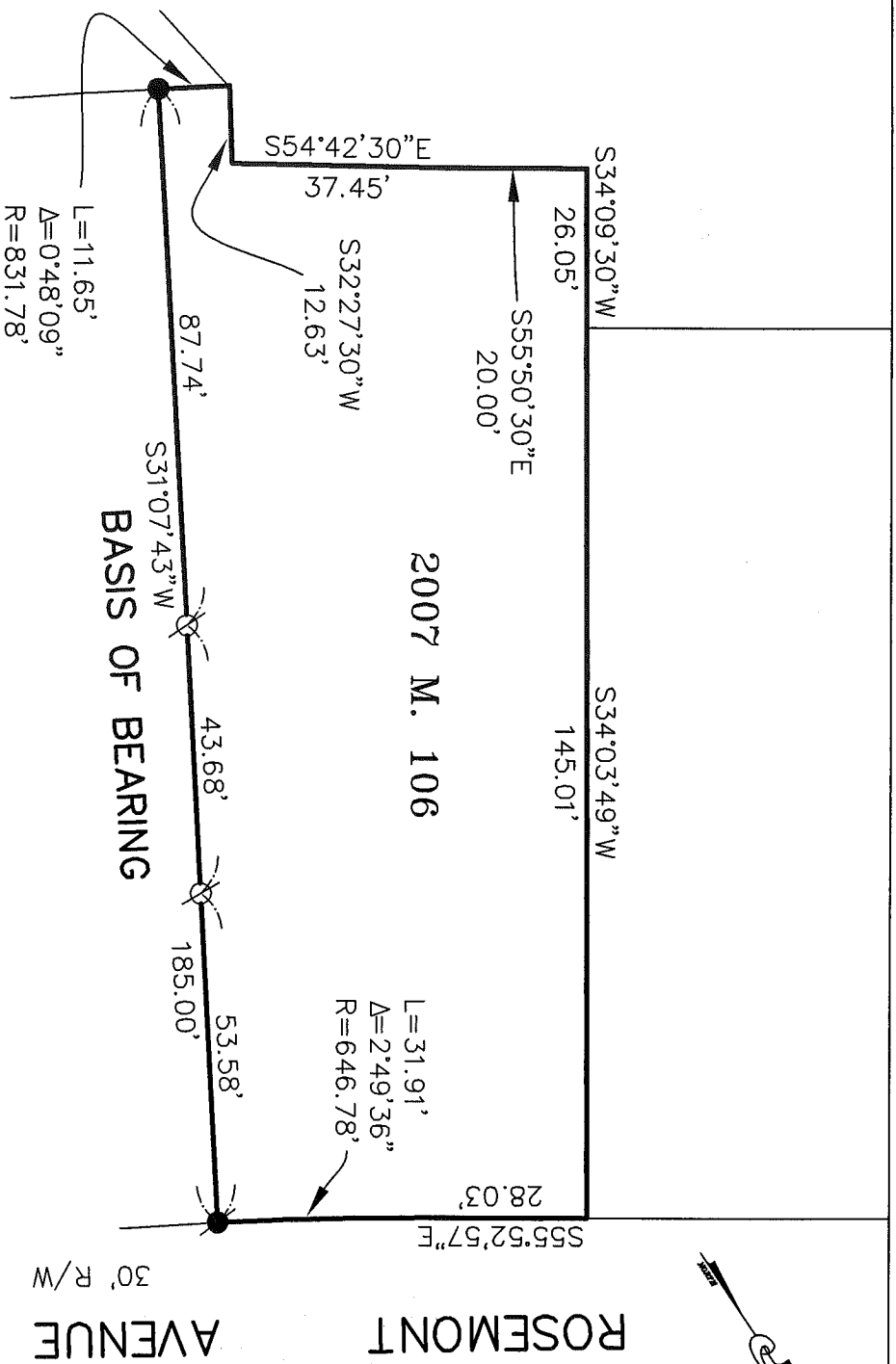


COUNTY SURVEYOR'S STATEMENT

This Corner Record was received JULY 13, 2015  
and examined and filed SEPTEMBER 21, 2015  
Signed Richard G. Simonitch P.L.S. or R.C.E. No. 7821  
Title County Surveyor



County Surveyor's Comment \_\_\_\_\_



**BASIS OF BEARING**

THE BASIS OF BEARING FOR THIS SURVEY IS S31°07'43"W BETWEEN FOUND NAIL & TAG AND PIPE & PLUG, L.S. 4694, PER 2007 M. 106



**CORNER RECORD**  
 2007 M. 106  
 SAN ANSELMO MARIN COUNTY CALIFORNIA

**LAWRENCE P. DOYLE**  
 LAND SURVEYOR/CIVIL ENGINEER  
 100 HELENS LANE MILL VALLEY CA 94941 (415-388-9585)

SCALE: 1" = 30'  
 DATE: 6/1/15  
 DRAWN BY: SHEET 1 OF 1  
 DRAWING NO. 2479-CR

**LEGEND**

- FOUND PIPE & PLUG, L.S. 4694
- FOUND NAIL & TAG, L.S. 4694
- ⊙ SET TACK & TAG, L.S. 4694