



**JERRICO ASSOCIATES**  
 SUITE 27  
 77 MARK DRIVE  
 SAN RAFAEL, CA 94903

A.P. # 5-055-22

6643

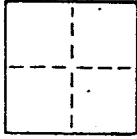
**CORNER RECORD**

1/6

COUNTY OF Marin T. \_\_\_\_\_ R. \_\_\_\_\_ MERIDIAN \_\_\_\_\_ CALIFORNIA

CORNER TYPE: GOVT. CORNER  MEANDER  RANCHO  CONTROL  OTHER

CORNER IDENTIFICATION — DATE OF VISIT \_\_\_\_\_ 19\_\_\_\_



CORNER — LEFT AS FOUND  FOUND AND TAGGED  REESTABLISHED OBLITERATED CORNER  REBUILT

PHYSICAL DESCRIPTION OF CORNER FOUND; EVIDENCE AND METHOD USED TO IDENTIFY OR REESTABLISH

- Found standard monuments as shown.
- Retracement survey of lot 3
- Woodland Park Unit 1 9 R.M. 45

PHYSICAL DESCRIPTION OF MONUMENTS REBUILT OR PERPETUATED

Found hub and tag L.S. 3887 w/ re-bar guard

CALIFORNIA COORDINATE SYSTEM ORDER: FIRST  SECOND  THIRD   
 STATIONS USED: NGS (USC & GS)  STATE  COUNTY  OTHER  STATION \_\_\_\_\_ STATION \_\_\_\_\_  
 ZONE \_\_\_\_\_ ELEVATION \_\_\_\_\_ NORTHINGS (Y) \_\_\_\_\_ EASTINGS (X) \_\_\_\_\_

SKETCH: (Include reference tie or witness points, remarks and topo of area)

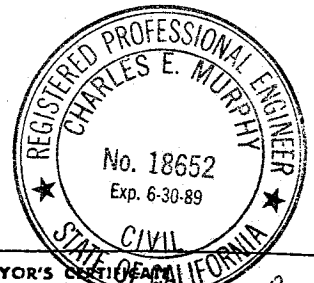
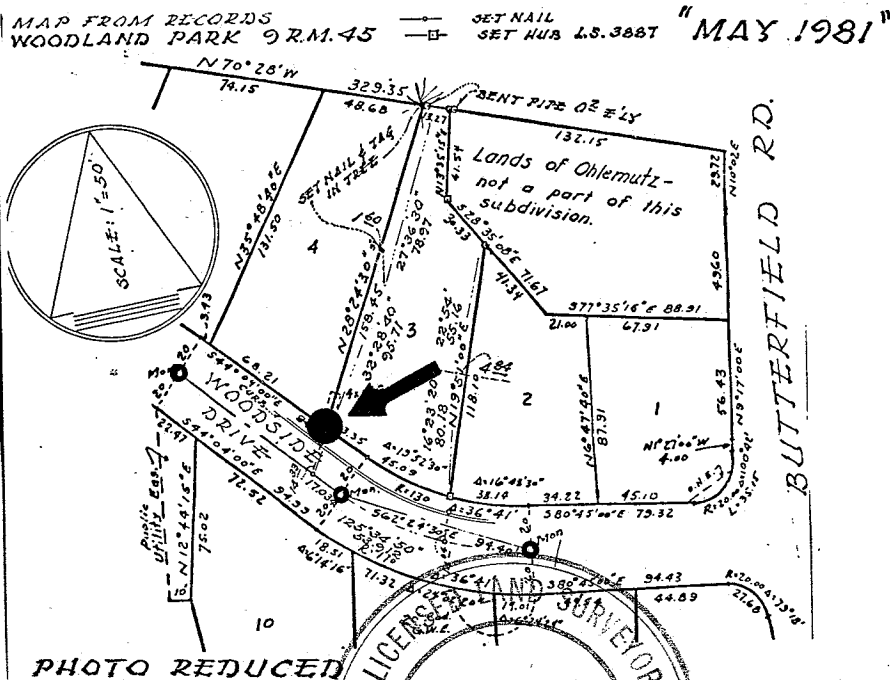


PHOTO REDUCED

**SURVEYOR'S CERTIFICATE**

LEON EDWARD BRUNDA  
 THIS CORNER RECORD WAS PREPARED BY ME OR UNDER MY DIRECTION IN CONFORMANCE WITH THE LAND SURVEYORS ACT ON October 1986 No. 3887

SIGNED: [Signature]  
 L.S. or R.C.E. No. 3887

COUNTY SURVEYOR'S CERTIFICATE

THE CORNER RECORD WAS RECEIVED 10 1986  
 AND EXAMINED AND FILED 10-16 1986  
 BY: [Signature]  
 TITLE: Dep. Co. Surveyor

DOCUMENT No. \_\_\_\_\_  
 STATEMENT ON BACK OF SHEET



**JERRICO ASSOCIATES**  
 SUITE 27  
 77 MARK DRIVE  
 SAN RAFAEL, CA 94903

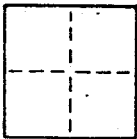
5-055-22

6643

**CORNER RECORD**

2/6

COUNTY OF Marin T. \_\_\_\_\_ R. \_\_\_\_\_ MERIDIAN \_\_\_\_\_ CALIFORNIA  
 CORNER TYPE: GOVT. CORNER  MEANDER  RANCHO  CONTROL  OTHER   
 CORNER IDENTIFICATION — DATE OF VISIT \_\_\_\_\_ 19\_\_\_\_



CORNER — LEFT AS FOUND  FOUND AND TAGGED  REESTABLISHED OBLITERATED CORNER  REBUILT

PHYSICAL DESCRIPTION OF CORNER FOUND; EVIDENCE AND METHOD USED TO IDENTIFY OR REESTABLISH

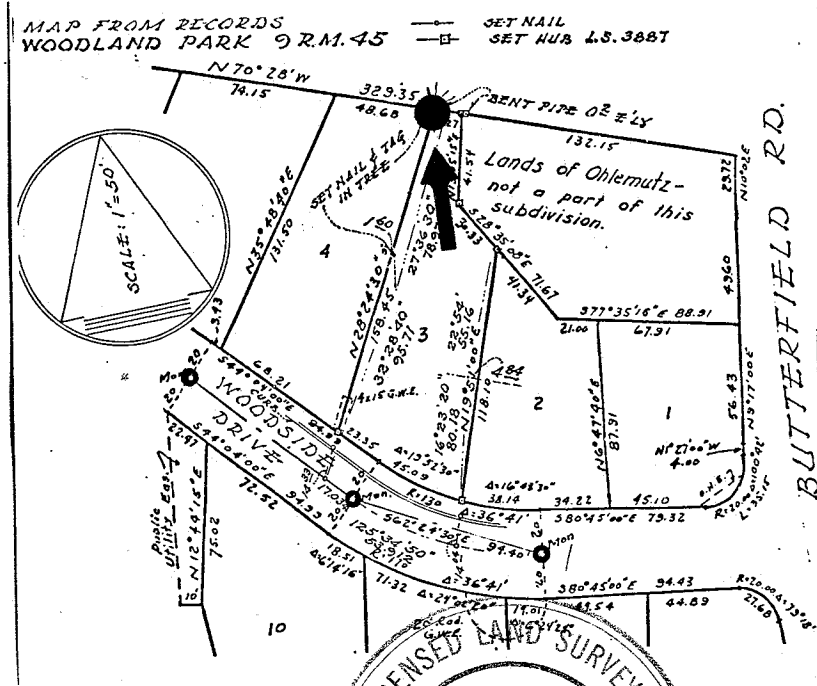
● Found standard monuments as shown.  
 Retracement survey of lot 3  
 Woodland Park Unit 1 9 R.M. 45

PHYSICAL DESCRIPTION OF MONUMENTS REBUILT OR PERPETUATED

Found tag L.S. 3887 in tree at fence corner.

CALIFORNIA COORDINATE SYSTEM ORDER: FIRST  SECOND  THIRD   
 STATIONS USED: NGS (USC & GS)  STATE  COUNTY  OTHER  STATION \_\_\_\_\_ STATION \_\_\_\_\_  
 ZONE \_\_\_\_\_ ELEVATION \_\_\_\_\_ NORTHINGS (Y) \_\_\_\_\_ EASTINGS (X) \_\_\_\_\_

SKETCH: (Include reference tie or witness points, remarks and topo of area)

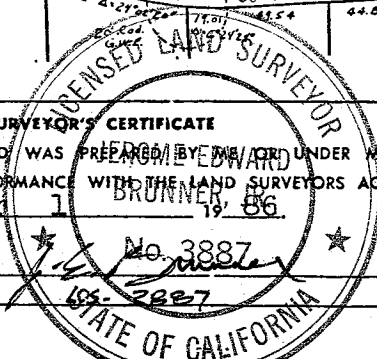


**SURVEYOR'S CERTIFICATE**

THIS CORNER RECORD WAS PREPARED BY EDWARD BRUNNER UNDER MY DIRECTION IN CONFORMANCE WITH THE LAND SURVEYORS ACT ON October 1 1986

SIGNED: \_\_\_\_\_

L.S. or R.C.E. No.: \_\_\_\_\_



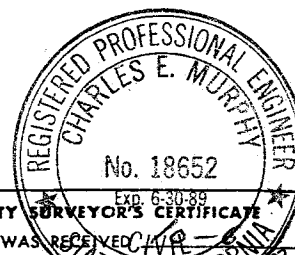
**COUNTY SURVEYOR'S CERTIFICATE**

THE CORNER RECORD WAS RECEIVED CHIEF 1986 AND EXAMINED AND FILED STATE OF CALIFORNIA 86

BY: [Signature]  
 TITLE: Dep. Co. Surveyor

DOCUMENT No. \_\_\_\_\_

STATEMENT ON BACK OF SHEET





**JERRICO ASSOCIATES**  
 SUITE 27  
 77 MARK DRIVE  
 SAN RAFAEL, CA 94903

5-055-22

6643

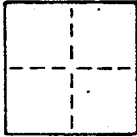
**CORNER RECORD**

3/6

COUNTY OF Marin T. \_\_\_\_\_ R. \_\_\_\_\_ MERIDIAN \_\_\_\_\_ CALIFORNIA

CORNER TYPE: GOVT. CORNER  MEANDER  RANCHO  CONTROL  OTHER

CORNER IDENTIFICATION — DATE OF VISIT \_\_\_\_\_ 19\_\_\_\_



CORNER — LEFT AS FOUND  FOUND AND TAGGED  REESTABLISHED OBLITERATED CORNER  REBUILT

PHYSICAL DESCRIPTION OF CORNER FOUND; EVIDENCE AND METHOD USED TO IDENTIFY OR REESTABLISH

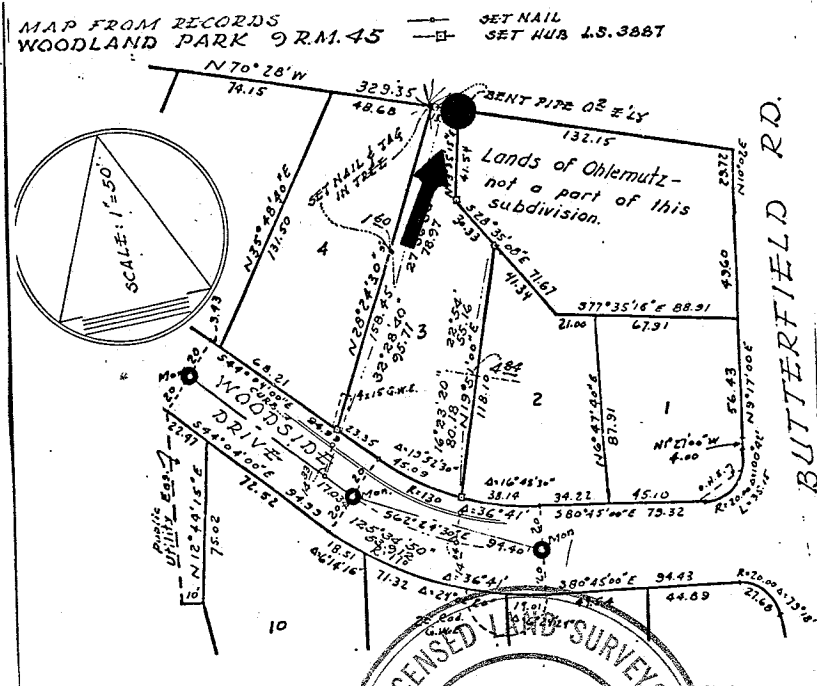
- Found standard monuments as shown.
- Retracement survey of lot 3
- Woodland Park Unit 1 9 R.M. 45

PHYSICAL DESCRIPTION OF MONUMENTS REBUILT OR PERPETUATED

Found hub and tag L.S. 3887

CALIFORNIA COORDINATE SYSTEM ORDER: FIRST  SECOND  THIRD   
 STATIONS USED: NGS (USC & GS)  STATE  COUNTY  OTHER  STATION \_\_\_\_\_ STATION \_\_\_\_\_  
 ZONE \_\_\_\_\_ ELEVATION \_\_\_\_\_ NORTHINGS (Y) \_\_\_\_\_ EASTINGS (X) \_\_\_\_\_

SKETCH: (Include reference tie or witness points, remarks and topo of area)

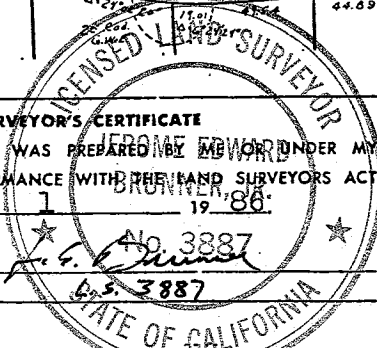


**SURVEYOR'S CERTIFICATE**

THIS CORNER RECORD WAS PREPARED BY AROME EDWARD BRUNNER UNDER MY DIRECTION IN CONFORMANCE WITH THE LAND SURVEYORS ACT ON October 1 1986.

SIGNED: \_\_\_\_\_

L.S. or R.C.E. No.: \_\_\_\_\_



**COUNTY SURVEYOR'S CERTIFICATE**

THE CORNER RECORD WAS RECEIVED 10-6-86 AND EXAMINED AND FILED STATE OF CALIFORNIA BY Charles E. Murphy TITLE: Prof. Land Surveyor

DOCUMENT No. \_\_\_\_\_

STATEMENT ON BACK OF SHEET



JERRICO ASSOCIATES

SUITE 27  
77 MARK DRIVE  
SAN RAFAEL, CA 94903

5-055-22

6643

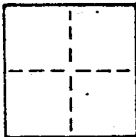
CORNER RECORD

4/6

COUNTY OF Marin T. \_\_\_\_\_ R. \_\_\_\_\_ MERIDIAN \_\_\_\_\_ CALIFORNIA

CORNER TYPE: GOVT. CORNER  MEANDER  RANCHO  CONTROL  OTHER

CORNER IDENTIFICATION — DATE OF VISIT \_\_\_\_\_ 19\_\_



CORNER — LEFT AS FOUND  FOUND AND TAGGED  REESTABLISHED OBLITERATED CORNER  REBUILT

PHYSICAL DESCRIPTION OF CORNER FOUND; EVIDENCE AND METHOD USED TO IDENTIFY OR REESTABLISH

- Found standard monuments as shown.
- Retracement survey of lot 3
- Woodland Park Unit 1 9 R.M. 45

PHYSICAL DESCRIPTION OF MONUMENTS REBUILT OR PERPETUATED

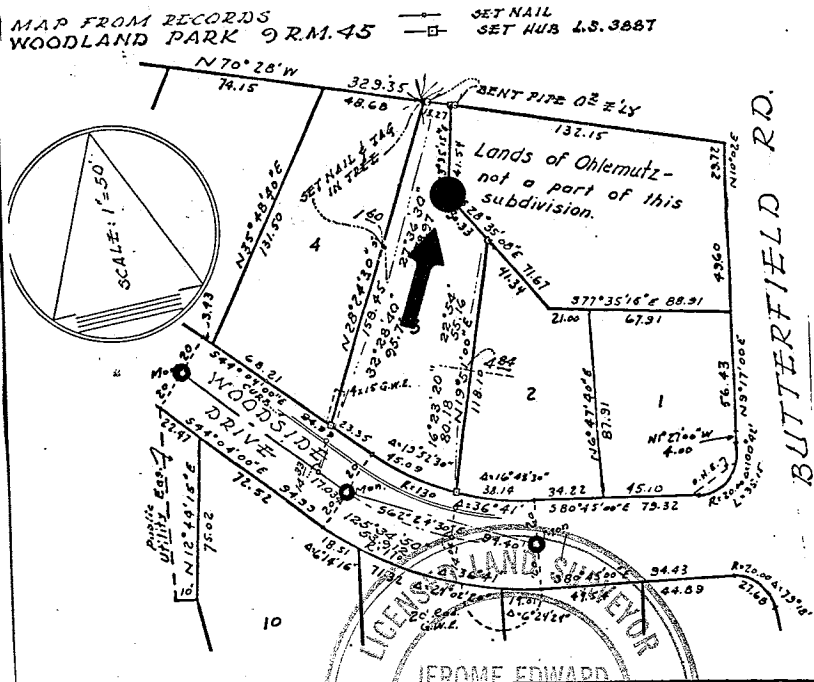
Set re-bar and cap L.S. 3887

CALIFORNIA COORDINATE SYSTEM ORDER: FIRST  SECOND  THIRD

STATIONS USED: NGS (USC & GS)  STATE  COUNTY  OTHER  STATION \_\_\_\_\_ STATION \_\_\_\_\_

ZONE \_\_\_\_\_ ELEVATION \_\_\_\_\_ NORTHINGS (Y) \_\_\_\_\_ EASTINGS (X) \_\_\_\_\_

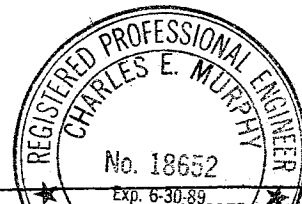
SKETCH: (Include reference tie or witness points, remarks and topo of area)



SURVEYOR'S CERTIFICATE

THIS CORNER RECORD WAS PREPARED BY ME OR UNDER MY DIRECTION IN CONFORMANCE WITH THE LAND SURVEYORS ACT ON October 1 19 86

SIGNED: \_\_\_\_\_  
L.S. or R.C.E. No.: 3887



COUNTY SURVEYOR'S CERTIFICATE

THE CORNER RECORD WAS RECEIVED May 6 1986 AND EXAMINED AND FILED FILED BY: Charles E. Murphy TITLE: Dep. Co. Surveyor

DOCUMENT No. \_\_\_\_\_  
STATEMENT ON BACK OF SHEET



**JERRICO ASSOCIATES**  
 SUITE 27  
 77 MARK DRIVE  
 SAN RAFAEL, CA 94903

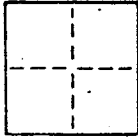
5-055-22

6643

**CORNER RECORD**

5/6

COUNTY OF Marin T. \_\_\_\_\_ R. \_\_\_\_\_ MERIDIAN \_\_\_\_\_ CALIFORNIA  
 CORNER TYPE: GOVT. CORNER  MEANDER  RANCHO  CONTROL  OTHER   
 CORNER IDENTIFICATION — DATE OF VISIT \_\_\_\_\_ 19\_\_\_\_



CORNER — LEFT AS FOUND  FOUND AND TAGGED  REESTABLISHED OBLITERATED CORNER  REBUILT

PHYSICAL DESCRIPTION OF CORNER FOUND; EVIDENCE AND METHOD USED TO IDENTIFY OR REESTABLISH

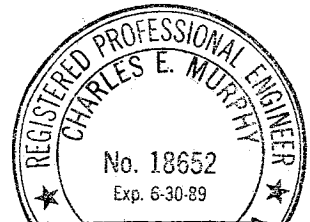
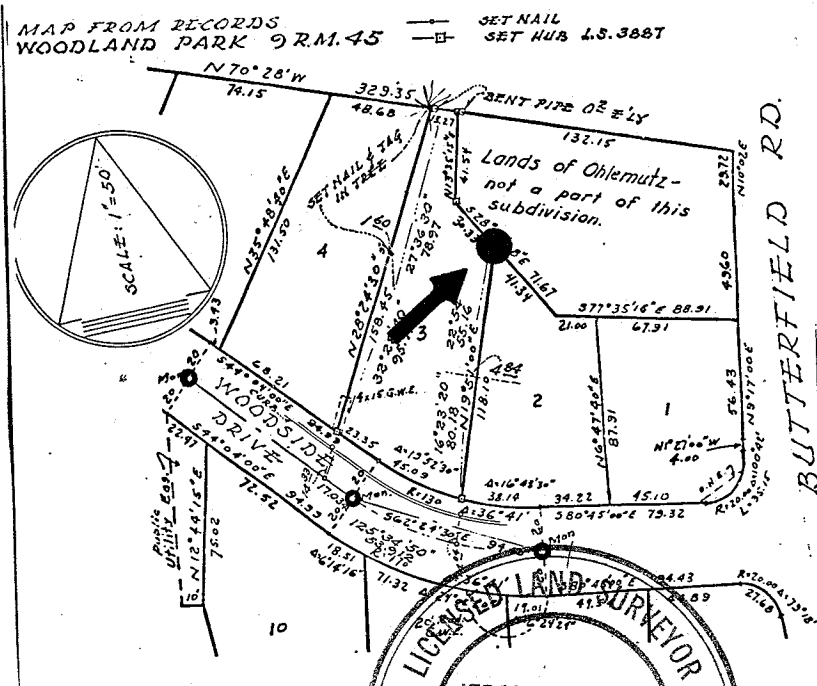
- Found standard monuments as shown.
- Retracement survey of lot 3
- Woodland Park Unit 1 9 R.M. 45

PHYSICAL DESCRIPTION OF MONUMENTS REBUILT OR PERPETUATED

Found hub re-set w/ re-bar and cap L.S. 3887

CALIFORNIA COORDINATE SYSTEM ORDER: FIRST  SECOND  THIRD   
 STATIONS USED: NGS (USC & GS)  STATE  COUNTY  OTHER  STATION \_\_\_\_\_ STATION \_\_\_\_\_  
 ZONE \_\_\_\_\_ ELEVATION \_\_\_\_\_ NORTHINGS (Y) \_\_\_\_\_ EASTINGS (X) \_\_\_\_\_

SKETCH: (Include reference tie or witness points, remarks and topo of area)



**SURVEYOR'S CERTIFICATE**  
 THIS CORNER RECORD WAS PREPARED BY ME OR UNDER MY DIRECTION IN CONFORMANCE WITH THE LAND SURVEYORS ACT ON October No. 3887  
 SIGNED: [Signature]  
 L.S. or R.C.E. No.: L.S. 3887

**COUNTY SURVEYOR'S CERTIFICATE**  
 THE CORNER RECORD WAS RECEIVED \_\_\_\_\_ 1985  
 AND EXAMINED AND FILED 10-16 1985  
 BY: [Signature]  
 TITLE: Dep. Co. Surveyor  
 DOCUMENT No. \_\_\_\_\_  
 STATEMENT ON BACK OF SHEET



**JERRICO ASSOCIATES**  
 SUITE 27  
 77 MARK DRIVE  
 SAN RAFAEL, CA 94903

5-055-22

6643

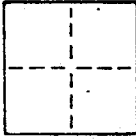
**CORNER RECORD**

6/6

COUNTY OF Marin T. \_\_\_\_\_ R. \_\_\_\_\_ MERIDIAN \_\_\_\_\_ CALIFORNIA

CORNER TYPE: GOVT. CORNER  MEANDER  RANCHO  CONTROL  OTHER

CORNER IDENTIFICATION — DATE OF VISIT \_\_\_\_\_ 19\_\_\_\_



CORNER — LEFT AS FOUND  FOUND AND TAGGED  REESTABLISHED OBLITERATED CORNER  REBUILT

PHYSICAL DESCRIPTION OF CORNER FOUND; EVIDENCE AND METHOD USED TO IDENTIFY OR REESTABLISH

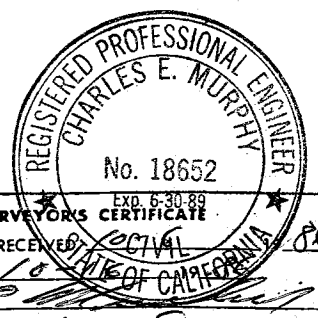
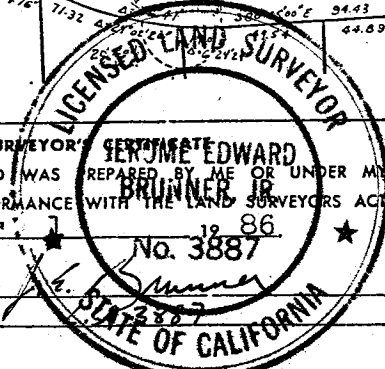
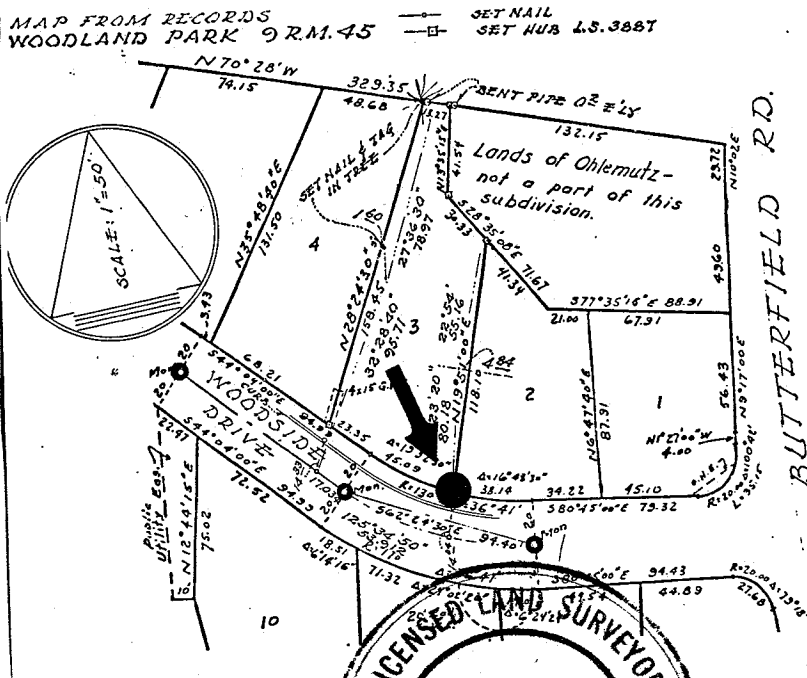
- Found standard monuments as shown.
- Retracement survey of lot 3
- Woodland Park Unit 1 9 R.M. 45

PHYSICAL DESCRIPTION OF MONUMENTS REBUILT OR PERPETUATED

Found hub and tag L.S. 3887

CALIFORNIA COORDINATE SYSTEM ORDER: FIRST  SECOND  THIRD   
 STATIONS USED: NGS (USC & GS)  STATE  COUNTY  OTHER  STATION \_\_\_\_\_ STATION \_\_\_\_\_  
 ZONE \_\_\_\_\_ ELEVATION \_\_\_\_\_ NORTHINGS (Y) \_\_\_\_\_ EASTINGS (X) \_\_\_\_\_

SKETCH: (Include reference tie or witness points, remarks and topo of area)



SURVEYOR: **EDWARD BRUNKER**  
 THIS CORNER RECORD WAS REPAIRED BY ME OR UNDER MY DIRECTION IN CONFORMANCE WITH THE LAND SURVEYORS ACT ON October 1 1986  
 SIGNED: \_\_\_\_\_  
 L.S. or R.C.E. No.: \_\_\_\_\_

COUNTY SURVEYORS CERTIFICATE  
 EXD. 6-30-89  
 THE CORNER RECORD WAS RECEIVED AND EXAMINED AND FILED BY: \_\_\_\_\_ TITLE: Rep. Co. Surveyor  
 DOCUMENT No. \_\_\_\_\_  
 STATEMENT ON BACK OF SHEET