

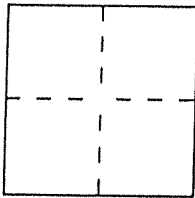
# CORNER RECORD

Document Number 005-021

City of San Anselmo

County of Marin, California

Brief Legal Description Monuments in Sheila Court per 6 RM 88



### CORNER TYPE

Government Corner  Control   
 Meander  Property   
 Rancho  Other   
 Date of Survey \_\_\_\_\_

### COORDINATES (Optional)

N. \_\_\_\_\_  
 E. \_\_\_\_\_  
 Zone \_\_\_\_\_ Datum \_\_\_\_\_  
 Elev. \_\_\_\_\_

Corner — Left as found  Found and tagged  Established  Reestablished  Rebuilt

Identification and type of corner found: Evidence used to identify or procedure used to establish or reestablish the corner:  
Found 3/4" Iron Pipe Monuments original to the "Sleepy Hollow Addition, San Anselmo, Calif.", May 1949, filed in Volume 6 of Maps at Page 88, Marin County Records.

A description of the physical condition of the monument as found and as set or reset:  
After Street Repaving Monuments were straddled, exposed, and a standard street monument case was placed atop each monument. Iron Pipes were left in their original condition and position.

### SURVEYOR'S STATEMENT

This Corner Record was prepared by me or under my direction in conformance with the Land Surveyors' Act on 8/8/07

Signed David Harp L.S. or R.C.E. Number LS 5290



### COUNTY SURVEYOR'S STATEMENT

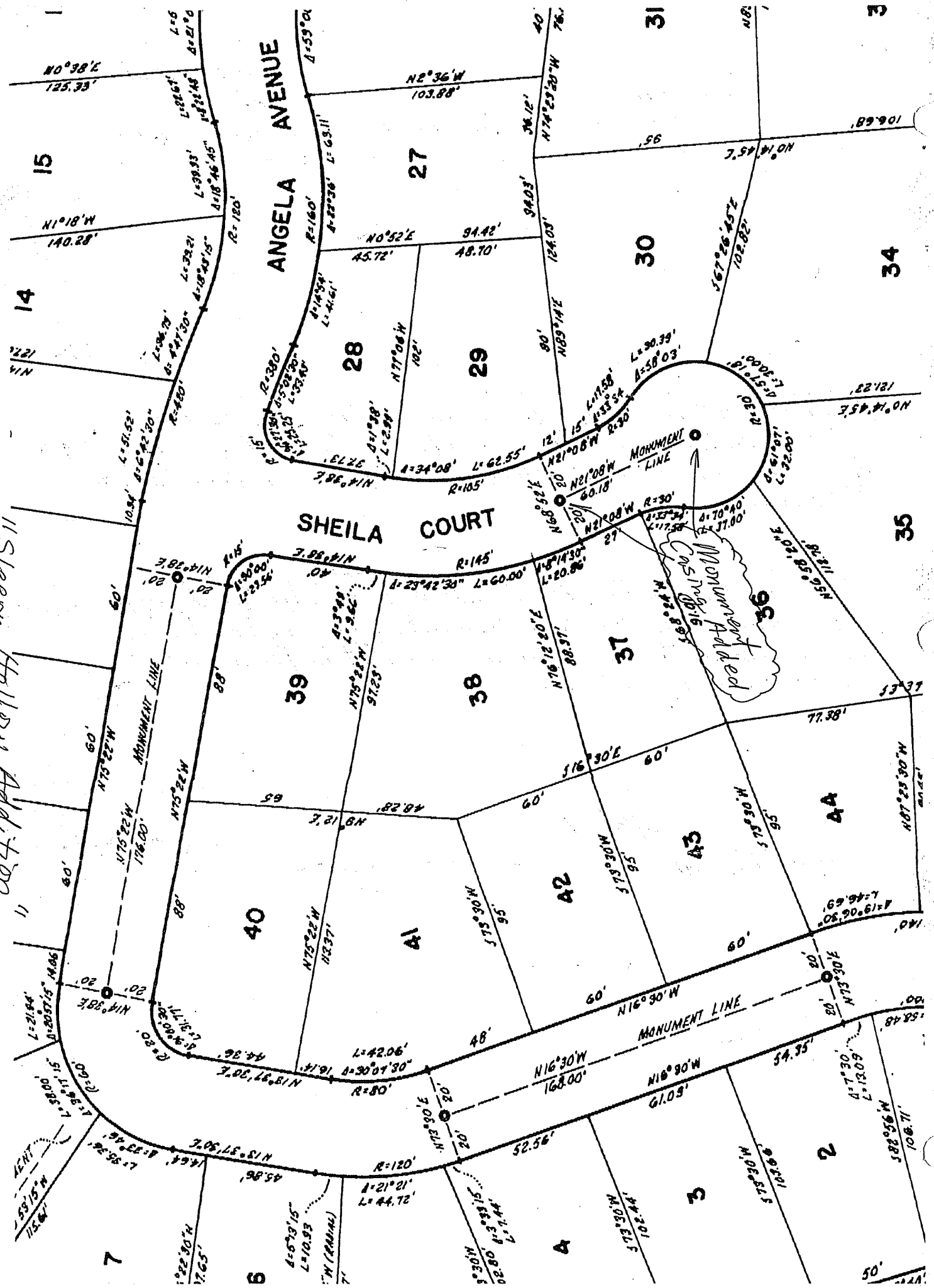
This Corner Record was received 8-10-2007 and examined and filed SEPTEMBER 10, 2007

Signed \_\_\_\_\_ Title COUNTY SURVEYOR



County Surveyor's Comment \_\_\_\_\_  
 \_\_\_\_\_  
 \_\_\_\_\_  
 \_\_\_\_\_

11 Sleepy Hollow Addition  
" (not to scale)



ANGELA AVENUE

SHEILA COURT

MONUMENT LINE

Monument Added  
50' Radius

7 8 9 10 11 12 13 14 15  
2 3 4 5 6 7 8 9 10 11 12 13 14 15  
27 28 29 30 31 32 33 34 35 36 37 38 39 40 41 42 43 44