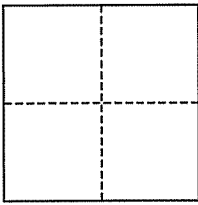


CORNER RECORD

Document Number 003-203-02&003-141-08
County of Marin, California

City of Fairfax

Brief Legal Description Lots 49-54 & 87-91, Block 1, 4 RM 74



CORNER TYPE

Government Corner Control
Meander Property
Rancho Other
Date of Survey August 5, 2010

COORDINATES (Optional)

N. _____
E. _____
Zone _____ NAD27 NAD83
NAD83 Epoch _____
Elev. _____
Vert. Datum: NGVD29 NAVD88
Meas. Units: Metric Imperial

Corner- Left as found Found and tagged Established Reestablished Rebuilt

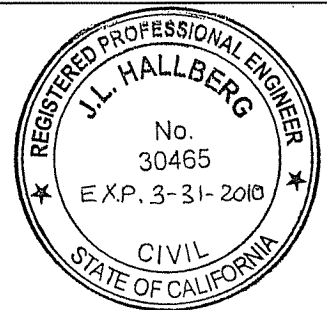
Identification and type of corner found: Evidence used to identify or procedure used to establish or reestablish the corner:
Found 3/4" Iron Pipe, RCE 30465, and Found 3/4" Iron Pipe, LS 3221, Per 2005 RS 216, as shown and noted

A description of the physical condition of the monument as found and as set or reset: Set 3/4" Iron Pipe & plug, RCE 30465, on NE and SE Property Corners of Lot 87, and NE Property Corner of Lot 54 as shown. Set Rebar & Cap, RCE 30465, on Northern Property line of Lot 54 as shown and noted. Set 2x2 Hub & Tack on Eastern Property Line of Lot 87 as shown and noted.

SURVEYOR'S STATEMENT

This corner Record was prepared by me or under my direction in conformance with the Land Surveyor's Act on September 30, 2010

Signed [Signature] P.L.S. or R.C.E. No. 30465



COUNTY SURVEYOR'S STATEMENT

This Corner Record was received OCTOBER 4, 2010

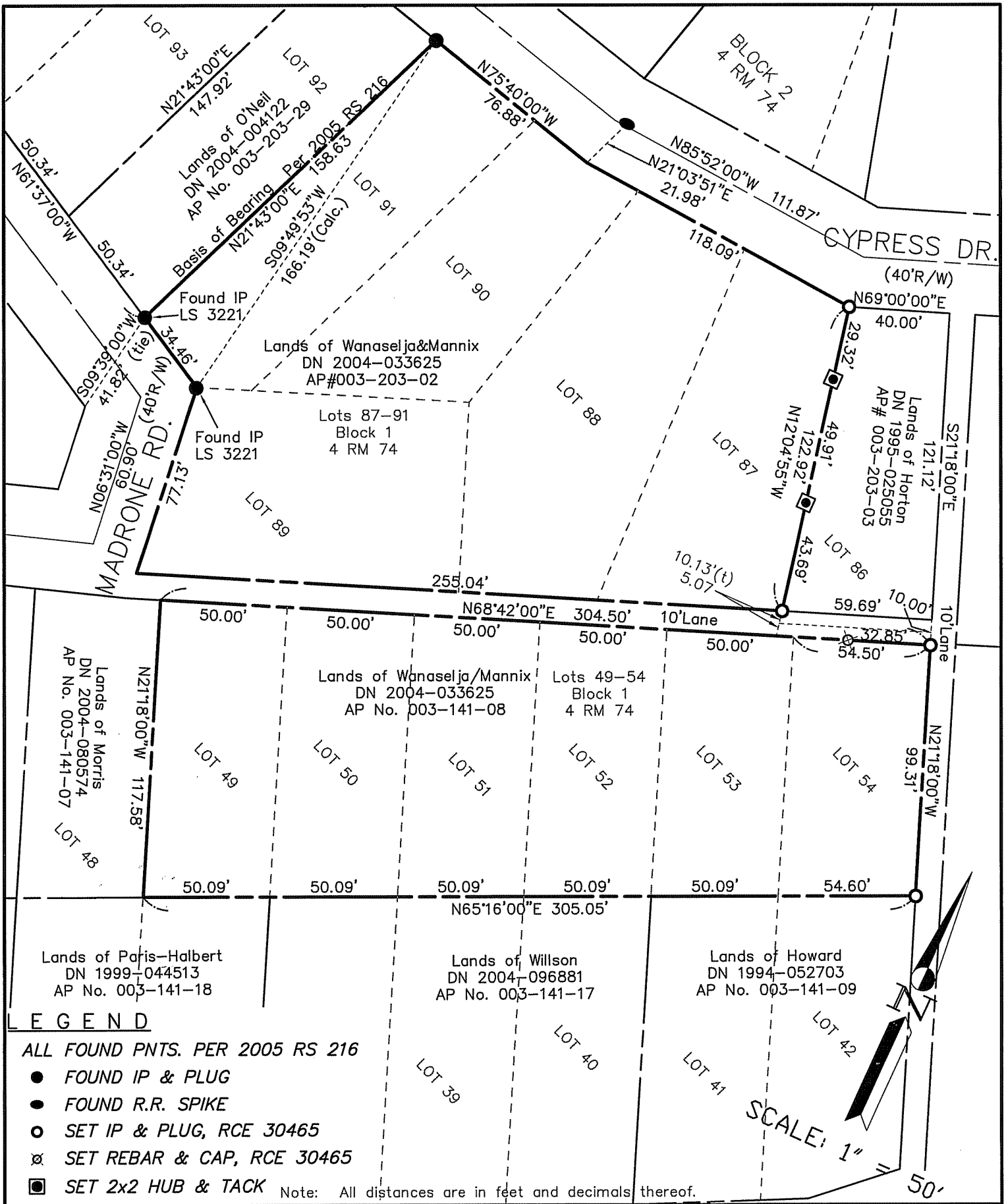
and examined and filed OCTOBER 7, 2010

Signed [Signature] P.L.S. or R.C.E. No. 7128

Title COUNTY SURVEYOR



County Surveyor's Comment _____



LEGEND

- ALL FOUND PNTS. PER 2005 RS 216
- FOUND IP & PLUG
- FOUND R.R. SPIKE
- SET IP & PLUG, RCE 30465
- ⊗ SET REBAR & CAP, RCE 30465
- SET 2x2 HUB & TACK

Note: All distances are in feet and decimals thereof.

SHEET	1	OF	1
SCALE:	1" = 50'	DESIGN:	PR
DATE:	Sep 2010	DRAWN:	E.D.L.
FILE:	2010-071	CHECKED:	J.L.H

J.L. ENGINEERING
CIVIL ENGINEERS-LAND SURVEYORS
 1539 4th ST., SAN RAFAEL, CA. 94901 (415) 457-6647

Corner Record
 Lands of Wanaselja & Mannix - 140 Madrone Rd.
 APN 003-203-02&141-08, Fairfax, Marin County, CA