

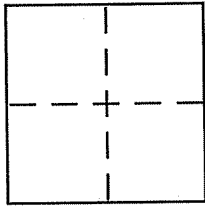
CORNER RECORD

Document Number APN 003-153-33

City of FAIRFAX

County of Marin, California

Brief Legal Description Lots 24, 25, 26, 27, 28 AND 59, Block 3 PER 4 R.M. 74



CORNER TYPE

Government Corner Control
Meander Property
Rancho Other
Date of Survey 12-02-10

COORDINATES (Optional)

N. _____
E. _____
Zone _____ NAD27 NAD83
NAD83 Epoch _____
Elev. _____
Vert. Datum: NGVD29 NAVD88
Meas. Units: Metric Imperial

Corner - Left as found Found and tagged Established Reestablished Rebuilt

Identification and type of corner found: Evidence used to identify or procedure used to establish or reestablish the corner:

See page 2 of 2

A description of the physical condition of the monument as found and as set or reset:

See page 2 of 2

SURVEYOR'S STATEMENT

This Corner Record was prepared by me or under my direction in conformance with the Land Surveyor's Act on December 6, 2010

Signed [Signature] (P.L.S. or R.C.E. No. 6784)



COUNTY SURVEYOR'S STATEMENT

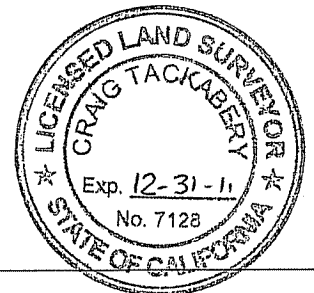
This Corner Record was received DECEMBER 9, 2010

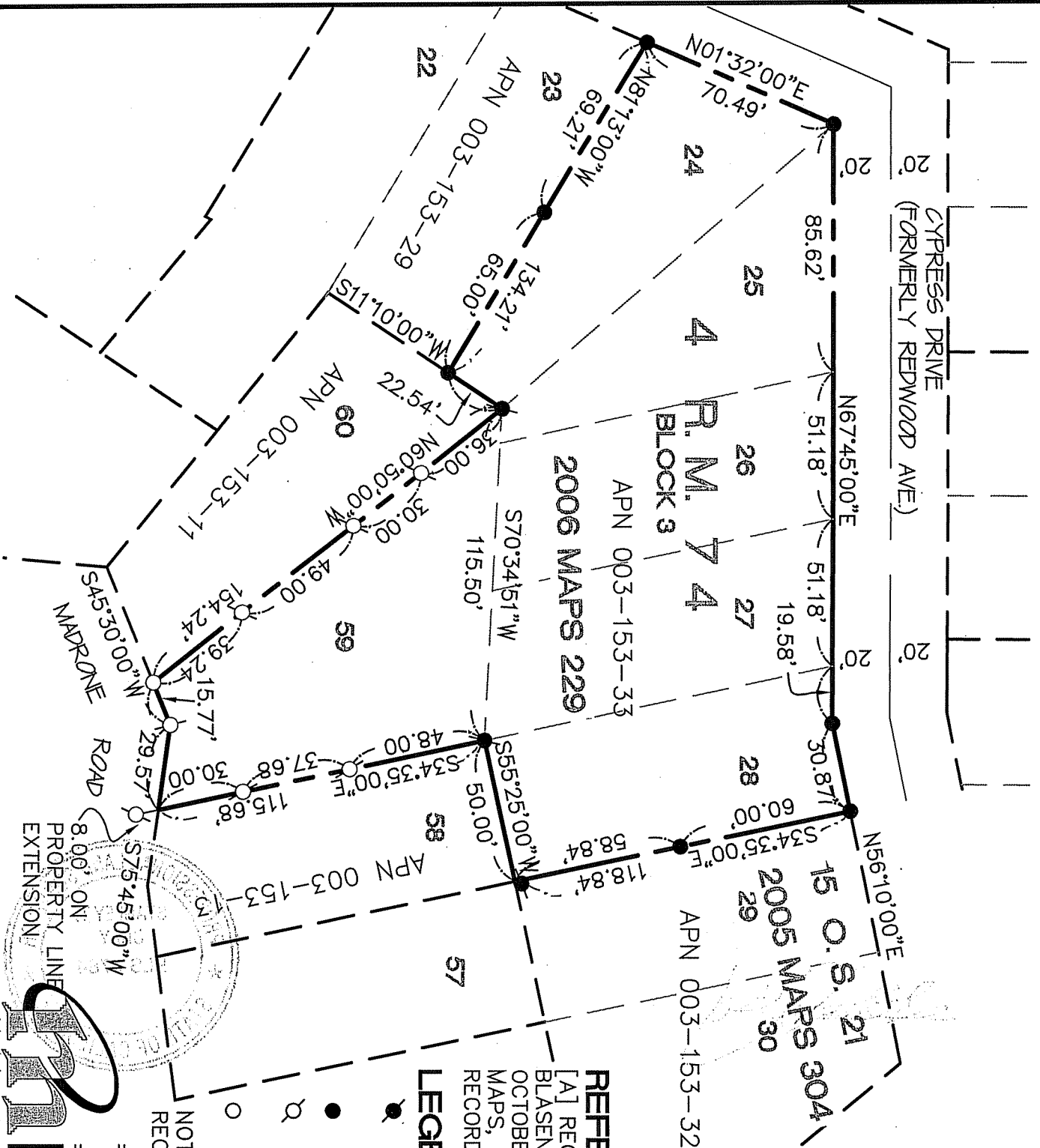
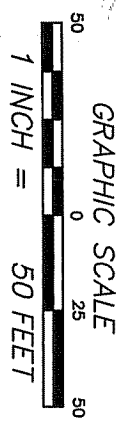
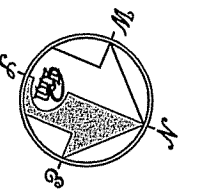
and examined and filed JANUARY 12, 2011

Signed [Signature] P.L.S. or R.C.E. No. 7128

Title COUNTY SURVEYOR

County Surveyor's Comment _____





REFERENCE

[A] RECORD OF SURVEY, LANDS OF BLASEN, FILED FOR RECORD 23 OCTOBER 2006 IN BOOK 2006 OF MAPS, AT PAGE 229, MARIN COUNTY RECORDS.

LEGEND

- FOUND REBAR AND CAP, PLS 6784 PER [A]
 - MONUMENTS SET PER [A]
 - SET 5/8" REBAR WITH CAP, PLS 6784
 - SET MAG NAIL AND WASHER, PLS 6784
- NOTE
RECORD=MEASURED

CORNER RECORD

MERIDIAN SURVEYING ENGINEERING, INC.

1812 UNION STREET
SAN FRANCISCO, CA 94123
(415) 440-4131
info@meridiansurvey.com

777 GRAND AVENUE, SUITE 202
SAN RAFAEL, CA 94901
(415) 456-5450