

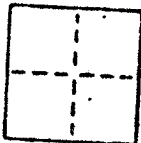
CORNER RECORD

COUNTY OF Marin T. _____ R. _____

CORNER TYPE: GOVT. CORNER MEANDER RANCHO CONTROL OTHER MERIDIAN _____ CALIFORNIA

CORNER IDENTIFICATION — DATE OF VISIT _____ 19____

A.P. # 3-111-11



CORNER — LEFT AS FOUND FOUND AND TAGGED REESTABLISHED OBLITERATED CORNER RESULT

PHYSICAL DESCRIPTION OF CORNER FOUND; EVIDENCE AND METHOD USED TO IDENTIFY OR REESTABLISH
Based on monuments as shown.

Lot 12, "Map of Meadow Way Tract; recorded 6 RM 65; Marin County Records.

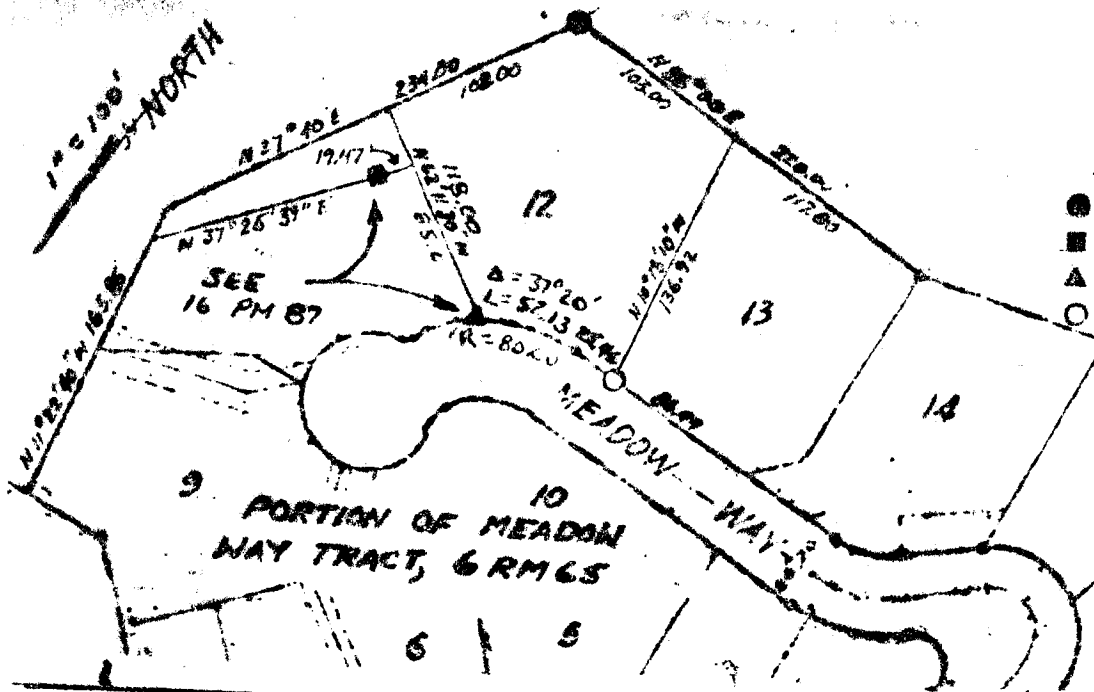
A.P. No. 3-111-11

Job No. 121

PHYSICAL DESCRIPTION OF MONUMENTS RESULT OR PERPETUATED
Set 3/4" iron pipe, tagged L.S. 5296.

CALIFORNIA COORDINATE SYSTEM ORDER: FIRST SECOND THIRD
STATIONS USED: NGS (USC & OS) STATE COUNTY OTHER STATION _____ STATION _____
ZONE _____ ELEVATION _____ NORTHINGS (Y) _____ EASTINGS (X) _____

SKETCH: (include reference tie or witness points, remarks and topo of area)

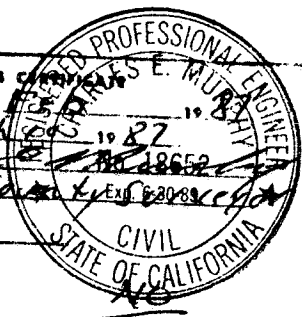


LEGEND

- FND. I.P. MONUMENT
- FND. HUB
- ▲ FND. SPIKE
- SET 3/4" I.P. L.S. 5296

SURVEYOR'S CERTIFICATE
THIS CORNER RECORD WAS PREPARED BY _____
DIRECTION IN CONFORMANCE WITH THE _____
ON DECEMBER 1987
SIGNED: [Signature]
L.S. or R.C.E. No. L.S. 5296
EXPIRES 12/31/87
LICENSED LAND SURVEYOR
STATE OF CALIFORNIA
5299

COUNTY SURVEYOR'S CERTIFICATE
THE CORNER RECORD WAS RECEIVED _____
AND EXAMINED AND FILED March 1987
BY [Signature]
TITLE: Deputy County Engineer
DOCUMENT No. _____
STATEMENT ON BACK OF SHEET



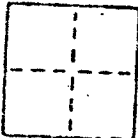
CORNER RECORD

COUNTY OF Marin

MERIDIAN CALIFORNIA

CORNER TYPE: GOVT. CORNER MEANDER RANCHO CONTROL OTHER

CORNER IDENTIFICATION -- DATE OF VISIT _____ 19__



CORNER -- LEFT AS FOUND FOUND AND TAGGED REESTABLISHED OBLITERATED CORNER RESULT

PHYSICAL DESCRIPTION OF CORNER FOUND; EVIDENCE AND METHOD USED TO IDENTIFY OR REESTABLISH
Based on monuments as shown.

Lot 12, "Map of Meadow Way Tract; recorded 6 RM 65; Marin County Records.

A.P. No. 3-111-11

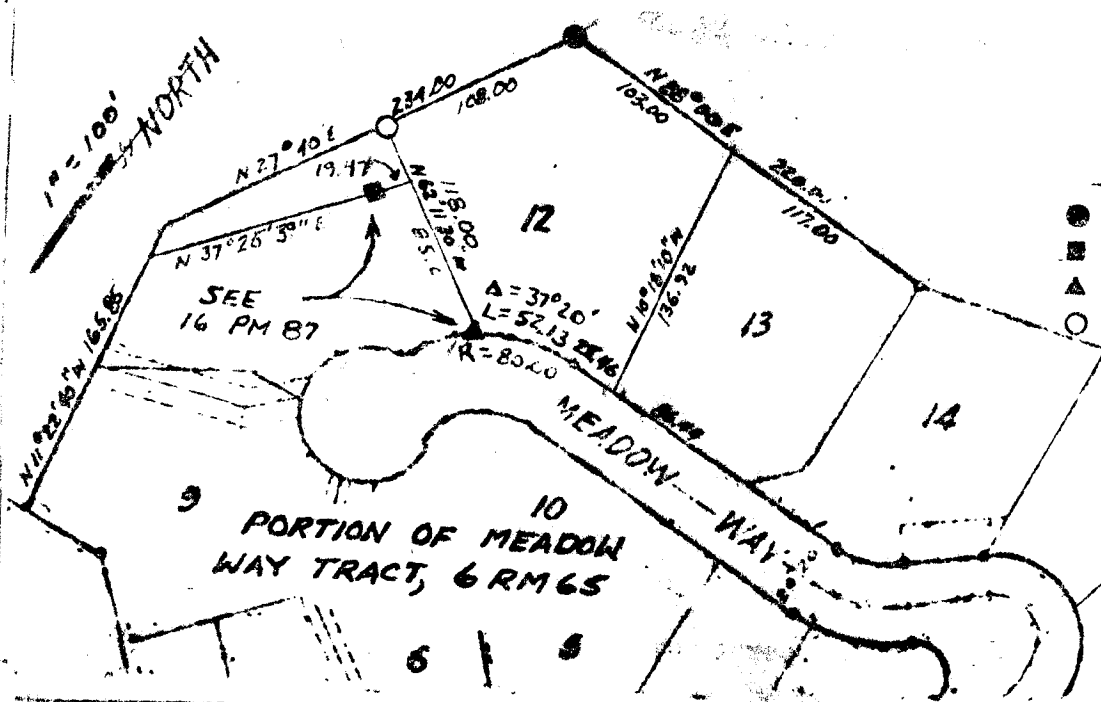
Job No. 121

PHYSICAL DESCRIPTION OF MONUMENTS RESULT OR PERPETUATED

Set 3/4" iron pipe, tagged L.S. 5296.

CALIFORNIA COORDINATE SYSTEM ORDER: FIRST SECOND THIRD
STATIONS USED: NGS (USC & OS) STATE COUNTY OTHER STATION _____
ZONE _____ ELEVATION _____ NORTHINGS (Y) _____ EASTINGS (X) _____

SKETCH: (Include reference file or witness points, remarks and type of area)



LEGEND

- FND. I.P. MONUMENT
- FND. HUB
- ▲ FND. SPIKE
- SET 3/4" I.P. L.S. 5296

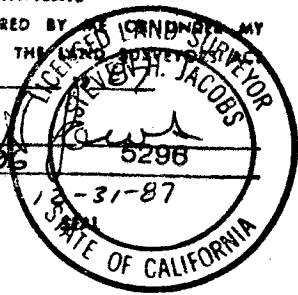
SURVEYOR'S CERTIFICATE

THIS CORNER RECORD WAS PREPARED BY STANLEY JACOBS MY DIRECTION IN CONFORMANCE WITH THE LEGISLATION ON DECEMBER

SIGNED: Stanley Jacobs 5296

L.S. or R.C.E. No. L.S. 5296

EXPIRES 12-31-87



COUNTY SURVEYOR'S CERTIFICATE

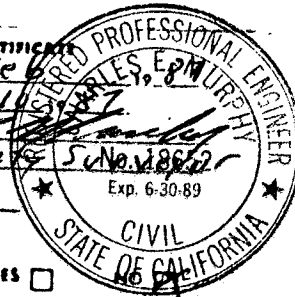
THE CORNER RECORD WAS RECEIVED Feb 19 1987 AND EXAMINED AND FILED March 11 1987

BY Charles E. Smith TITLE Deputy County Surveyor

DOCUMENT No. _____

STATEMENT ON BACK OF SHEET

YES

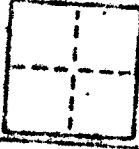


CORNER RECORD

COUNTY OF Marin MERCIDIAN CALIFORNIA

CORNER TYPE: GOVT. CORNER MEASURER BANCROFT CORNER OTHER

CORNER IDENTIFICATION - DATE OF VISIT _____



CORNER - LEFT AS FOUND FOUND AND TAPPED ESTABLISHED CALIFORNIA CORNER RESULT

PHYSICAL DESCRIPTION OF CORNER FOUND, EVIDENCE AND METHOD USED TO IDENTIFY OR REESTABLISH
 Based on monuments as shown.

Lot 12, "Map of Meadow Way Tract; recorded 6 RM 65; Marin County Records.

A.P. No. 3-111-11

Job No. 121

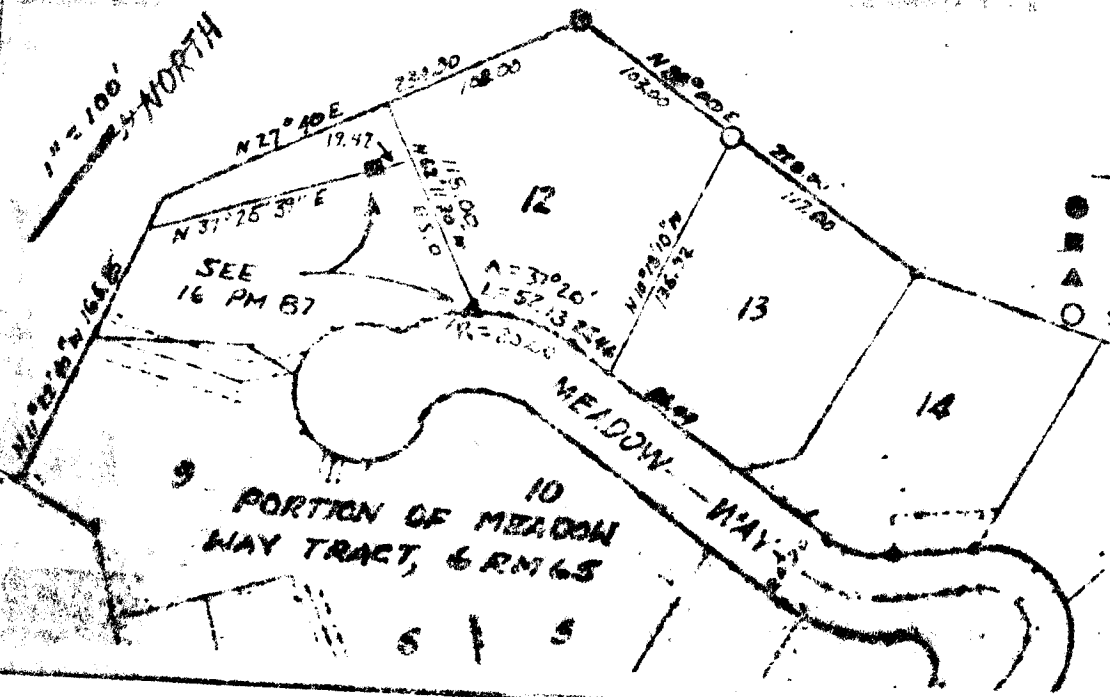
PHYSICAL DESCRIPTION OF MONUMENTS PERMANENT OR PERPETUATED
 Set 3/4" iron pipe, tagged L.S. 5296.

CALIFORNIA COORDINATE SYSTEM ORDER: FIRST SECOND THIRD

STATIONS USED: NGS (USC & OSI) STATE COUNTY OTHER STATION _____

ZONE _____ ELEVATION _____ NORTHINGS (F) _____ EASTINGS (G) _____

SECTION (Include reference to or witness points, remarks and tops of areas)



LEGEND

- FND. I.P. MONUMENT
- FND. HUB
- ▲ FND. SPIKE
- SET 3/4" I.P. L.S. 5296

SURVEYOR'S CERTIFICATE

THIS CORNER RECORD WAS PREPARED BY MEASURER W. H. JACOBS
 DIRECTION IN CONFORMANCE WITH THE LAW
 ON DECEMBER

SIGNED: [Signature]
 L.S. or R.C.E. No. L.S. 5296 5296
 EXPIRES 12-31-87

STATE OF CALIFORNIA

COUNTY SURVEYOR'S CERTIFICATE

THE CORNER RECORD WAS RECEIVED February 1987
 AND EXAMINED AND FILED March 1987
 BY [Signature]
 TITLE Deputy County Surveyor

DOCUMENT No. _____
 STATEMENT ON BACK OF SHEET _____

STATE OF CALIFORNIA

