

CORNER RECORD

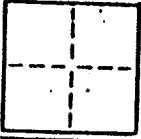
1013

COUNTY OF _____ T. _____ R. _____ MERIDIAN CALIF

CORNER TYPE: GOVT. CORNER MEANDER RANCHO CONTROL OTHER

CORNER IDENTIFICATION - DATE OF VISIT _____ 19__

A.P. # 3-062-01



CORNER - LEFT AS FOUND FOUND AND TAGGED REESTABLISHED OBLITERATED CORNER RESULT

PHYSICAL DESCRIPTION OF CORNER FOUND, EVIDENCE AND METHOD USED TO IDENTIFY OR REESTABLISH

Based on monuments shown in Book 16 of Surveys, page 6, Official Records, Marin County Ca.*

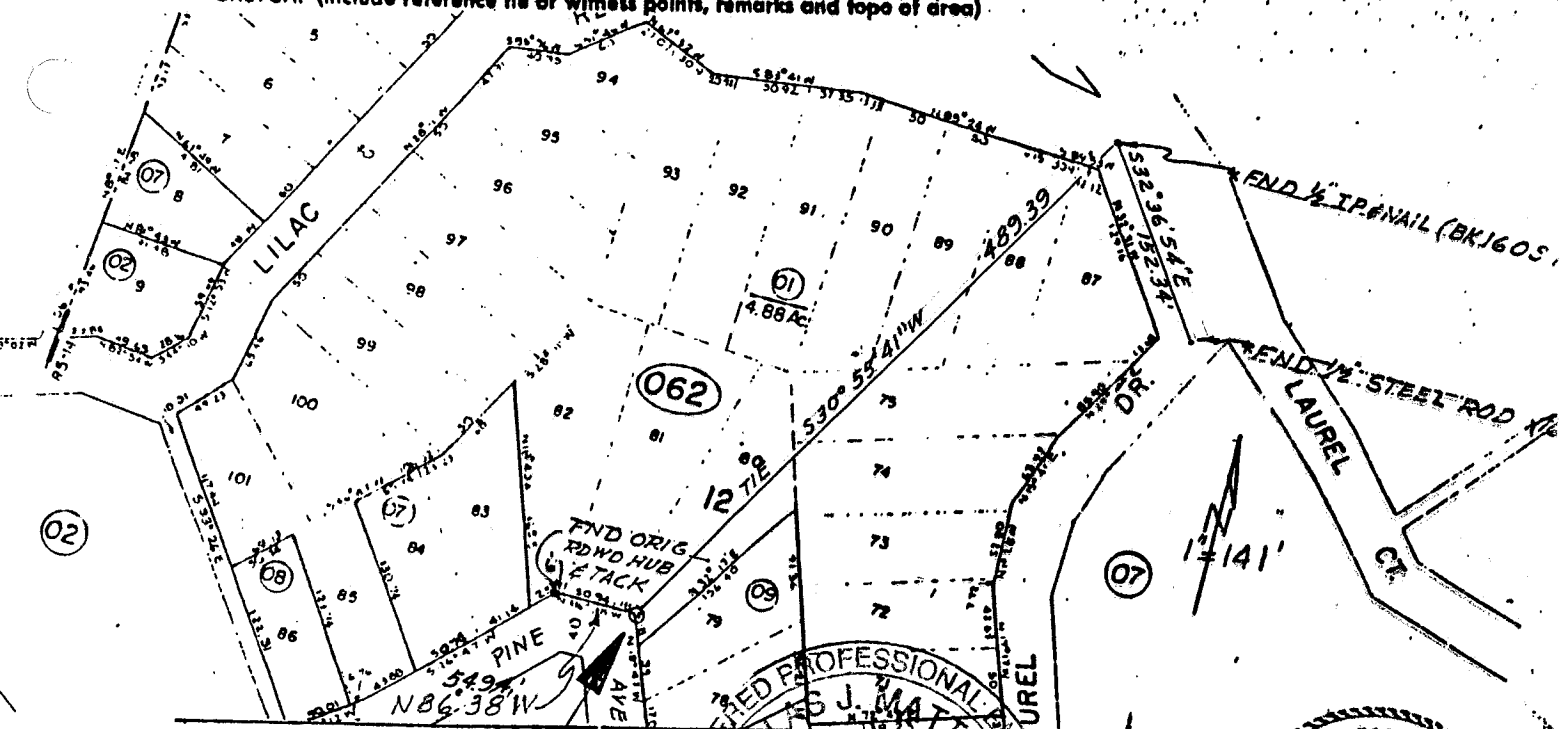
3-062-01

PHYSICAL DESCRIPTION OF MONUMENTS, RESULT OR PERPETUATED

o Set 5/8" Rebar and plastic cap R.C.E. 18200

CALIFORNIA COORDINATE SYSTEM ORDER: FIRST SECOND THIRD
STATIONS USED: NGS (USC & GS) STATE COUNTY OTHER STATION _____ STATION _____
ZONE _____ ELEVATION _____ NORTHINGS (Y) _____ EASTINGS (X) _____

SKETCH: (Include reference line or witness points, remarks and topo of area)



SURVEYOR'S CERTIFICATE

THIS CORNER RECORD WAS PREPARED BY ME OR UNDER MY DIRECTION IN CONFORMANCE WITH THE LAND SURVEYORS ACT. ON August 27 19__

SIGNED: 18200 *Douglas J. Matteson 16-23*

L.S. or R.C.E. No. 18200

COUNTY SURVEYOR'S CERTIFICATE

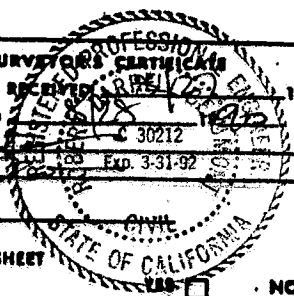
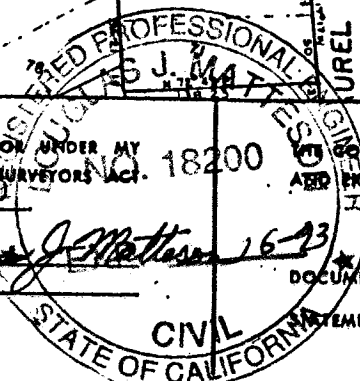
THIS CORNER RECORD WAS RECEIVED BY ME AND EXAMINED AND FILED

BY: *[Signature]* No. 30212 Exp. 3-31-92

TITLE: _____

DOCUMENT No. _____

SEAL



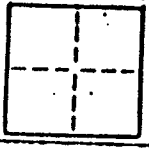
STATEMENT ON BACK OF SHEET

NO

CORNER RECORD

2 of 3

COUNTY OF _____ T. _____ R. _____ MERIDIAN _____ CALIF. _____
 CORNER TYPE: GOVT. CORNER MEANDER RANCHO CONTROL OTHER
 CORNER IDENTIFICATION — DATE OF VISIT _____ 19____



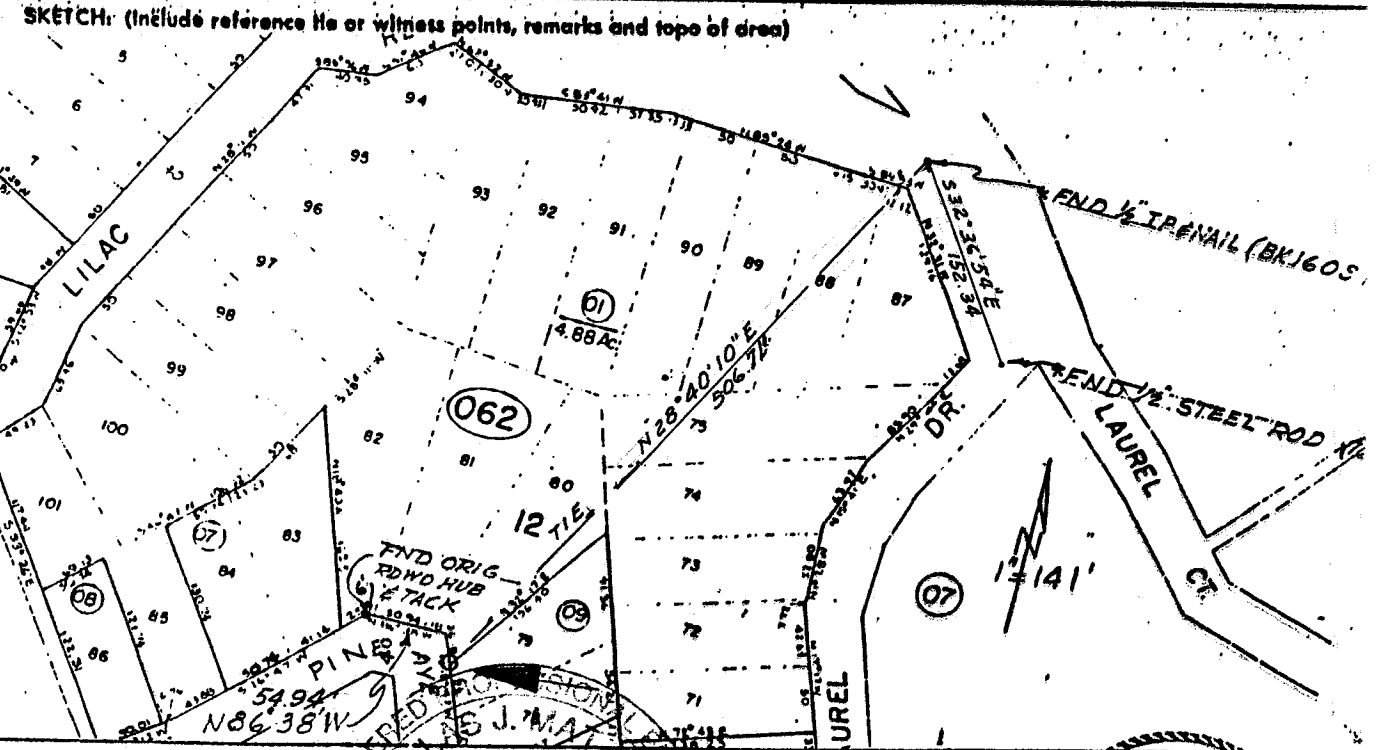
CORNER — LEFT AS FOUND FOUND AND TAGGED REESTABLISHED OBLITERATED CORNER REBUILT

PHYSICAL DESCRIPTION OF CORNER FOUND, EVIDENCE AND METHOD USED TO IDENTIFY OR REESTABLISH
 Based on monuments shown in Book 16 of Surveys, page 6, Official Records, Marin County Ca.*

APN 3-062-01

PHYSICAL DESCRIPTION OF MONUMENTS, REBUILT OR PERPETUATED
 o Set 5/8" Rebar and plastic cap R.C.E. 18200

CALIFORNIA COORDINATE SYSTEM ORDER: FIRST SECOND THIRD
 STATIONS USED: NGS (USC & GS) STATE COUNTY OTHER STATION _____ STATION _____
 ZONE _____ ELEVATION _____ NORTHINGS (N) _____ EASTINGS (E) _____



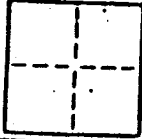
SURVEYOR'S CERTIFICATE
 THIS CORNER RECORD WAS PREPARED BY ME OR UNDER MY DIRECTION IN CONFORMANCE WITH THE LAND SURVEYORS ACT ON August 27 1990
 SIGNED: Douglas J. Mattison
 L.S. or R.C.E. No. 18200
 6-93
 STATE OF CALIFORNIA
 CIVIL ENGINEER

COUNTY SURVEYOR'S CERTIFICATE
 THE CORNER RECORD WAS RECEIVED AND EXAMINED AND FILED BY: _____ TITLE: _____ DOCUMENT No. _____ STATEMENT ON BACK OF SHEET _____
 STATE OF CALIFORNIA
 CIVIL ENGINEER

CORNER RECORD

3 of 3

COUNTY OF _____ T. _____ R. _____ MERIDIAN _____ CALIFORNI
CORNER TYPE: GOVT. CORNER MEANDER RANCHO CONTROL OTHER
CORNER IDENTIFICATION - DATE OF VISIT _____ 19____



CORNER - LEFT AS FOUND FOUND AND TAGGED REESTABLISHED OBLITERATED CORNER RESULT

PHYSICAL DESCRIPTION OF CORNER FOUND, EVIDENCE AND METHOD USED TO IDENTIFY OR REESTABLISH

Based on monuments shown in Book 16 of Surveys, page 6, Official Records, Marin County Ca.*

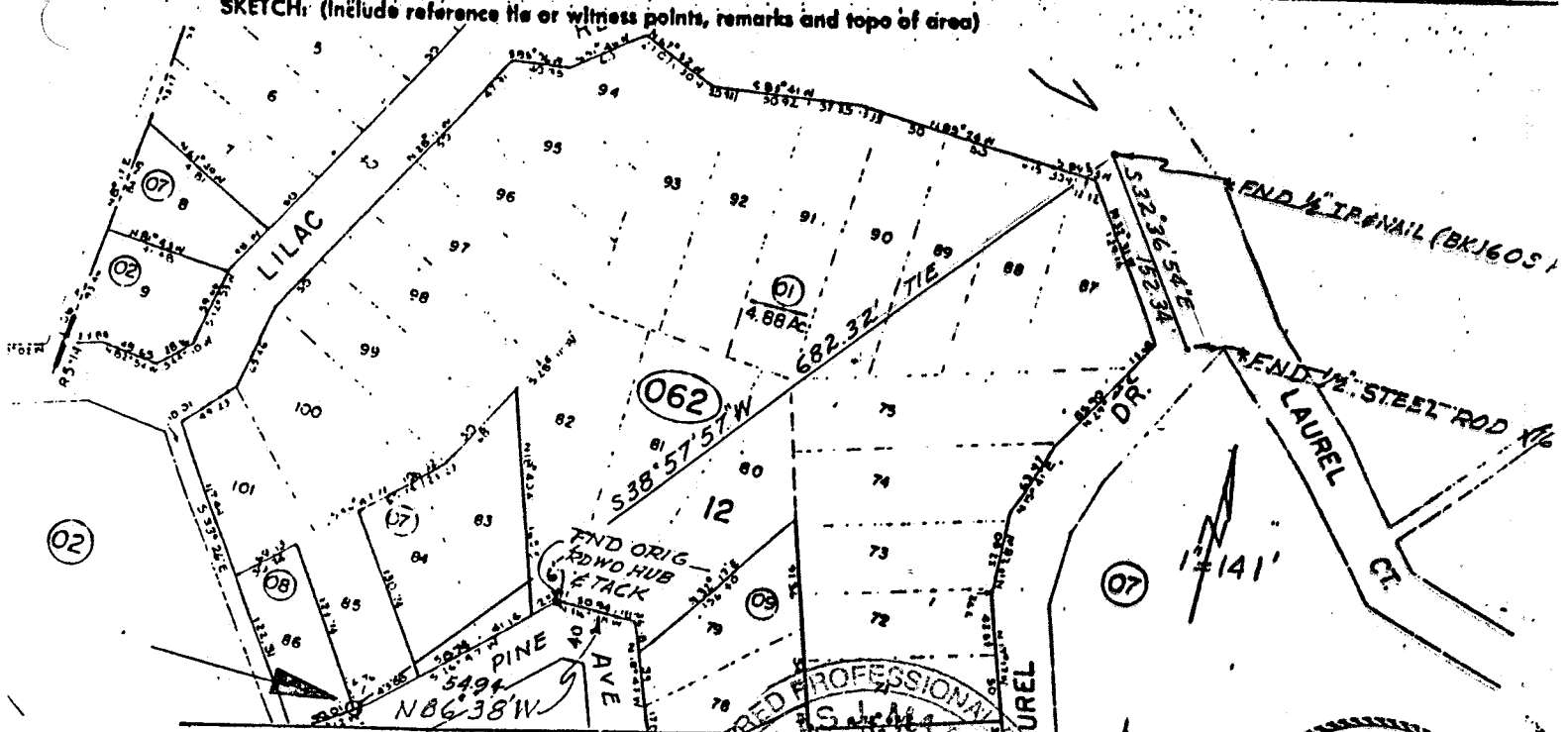
APN #3-062-01

PHYSICAL DESCRIPTION OF MONUMENTS. RESULT OR PERPETUATED

o Set 5/8" Rebar and plastic cap R.C.E. 18200

CALIFORNIA COORDINATE SYSTEM ORDER: FIRST SECOND THIRD
STATIONS USED: NGS (USC & GS) STATE COUNTY OTHER STATION _____ STATION _____
ZONE _____ ELEVATION _____ NORTHINGS (7) _____ EASTINGS (X) _____

SKETCH: (Include reference file or witness points, remarks and topo of area)

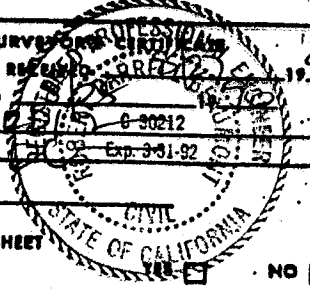
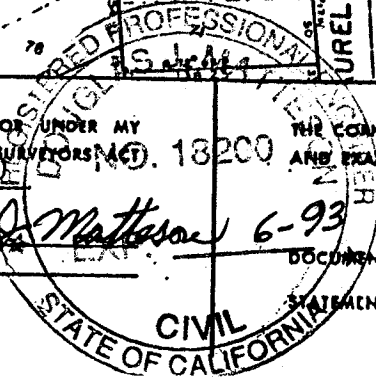


SURVEYOR'S CERTIFICATE

THIS CORNER RECORD WAS PREPARED BY ME OR UNDER MY DIRECTION IN CONFORMANCE WITH THE LAND SURVEYORS ACT ON August 27 1998

SIGNED: Douglas J. Matheson 6-93
L.S. or R.C.E. No.: 18200

COUNTY SURVEYOR'S OFFICE
THE CORNER RECORD WAS REVIEWED AND EXAMINED AND FILED BY: [Signature] 6-30-98
TITLE: [Signature] Exp. 3-31-99



SEAL

STATEMENT ON BACK OF SHEET

NO