

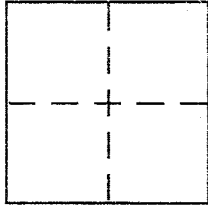
**CORNER RECORD**

Document Number 02-192-49/17

City of FAIRFAX

County of MARIN, California

Brief Legal Description LOT 219 & 220 MAP NO. 2 DEER PARK (2 RM 113)



**CORNER TYPE**

Government Corner  Control   
Meander  Property   
Rancho  Other   
Date of Survey 4/5/2001

**COORDINATES (Optional)**

N. \_\_\_\_\_  
E. \_\_\_\_\_  
Zone \_\_\_\_\_ NAD27  NAD83   
NAD83 Epoch \_\_\_\_\_  
Elev. \_\_\_\_\_  
Vert. Datum: NGVD29  NAVD88   
Meas. Units: Metric  Imperial

Corner - Left as found  Found and tagged  Established  Reestablished  Rebuilt

Identification and type of corner found: Evidence used to identify or procedure used to establish or reestablish the corner:

FOUND ORIGINAL OLD 2x3 HUBS AT THE CORNER OF LOT 219/220 MAP NO. 2 DEER PARK (2 RM 113) AT THE FOREST AVENUE RIGHT OF WAY. HUBS IN DETERIORATING CONDITION & SLIGHTLY LEANING.

A description of the physical condition of the monument as found and as set or reset:

REPLACED HUBS LOCATION WITH 1/2" REBAR WITH PLS CAP 5379 AFFIXED TO TOP OF REBAR & DRIVEN FLUSH WITH GROUND GRADE.

**SURVEYOR'S STATEMENT**

This Corner Record was prepared by me or under my direction in conformance with

the Land Surveyor's Act on AUGUST 31 2001

Signed Douglas J. Scramton P.L.S. or R.C.E. No. PLS 5379  
Renewal 6-30-01



**COUNTY SURVEYOR'S STATEMENT**

This Corner Record was received SEPTEMBER 4, 2001

and examined and filed SEPTEMBER 4, 2001

Signed \_\_\_\_\_ P.L.S. or R.C.E. No. 7128

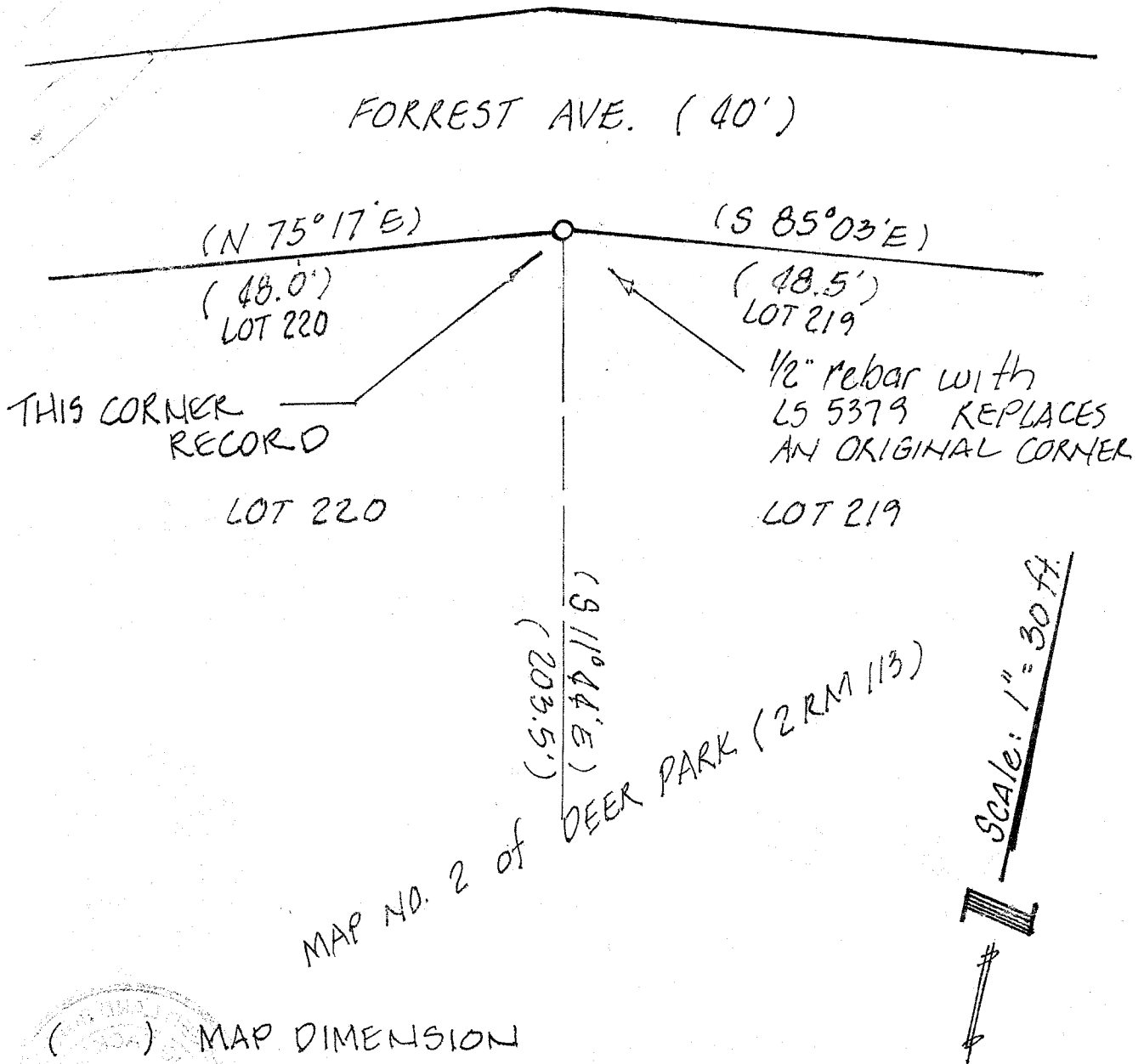
Title DEPUTY



County Surveyor's Comment \_\_\_\_\_

BY: NOVATO, CA  
PREPARED  
DJ SCRANTON SURVEYING

RECORD DIMENSIONS GIVEN IN FEET & DECIMALS THEREOF



( ) MAP DIMENSION

- 1/2" REBAR WITH PLS 5379 CAP AFFIXED TO TOP THIS REBAR REPLACES DETERIORATED ORIGINAL 2x3 HUB LOCATION. NOTE: THIS HUB IS SHOWN ON 25 05 8. REMAINS OF HUB AVAILABLE FOR INSPECTION! AT THIS OFFICE