

# CORNER RECORD

Agency Index

Document Number

DPN # 18-068  
APN 002-122-32 ADJ

Town of FAIRFAX

County of MARIN, California

Brief Legal Description

LOT 41 AS SHOWN UPON THE MAP ENTITLED "MAP NO. 2 PACHECO TRACT" FILED FOR RECORD JUNE 4, 1914 IN BOOK 4 OF MAPS AT PAGE 72, MARIN COUNTY RECORDS.

CANADA DE HERRERA RANCHO

### CORNER TYPE

Government Corner  Control  
Meander  Property  
Rancho  Other

Date of Survey 11/21/2018

### COORDINATES (Optional)

N. \_\_\_\_\_ E. \_\_\_\_\_  
Elevation \_\_\_\_\_  
Units Metric  U.S. Survey Foot   
 Horizontal Datum \_\_\_\_\_  
Zone \_\_\_\_\_ Epoch Date \_\_\_\_\_  
Vertical Datum \_\_\_\_\_  
 Complies with Public Resources Code §§8801-8819  
 Complies with Public Resources Code §§8890-8902

PLS Act Ref:  8765(d)  8771  8773  Other:

Corner/Monument:  Left as found  Established  Rebuilt  Pre-Construction  
 Found and tagged  Reestablished  Referenced  Post-Construction

Narrative of corner identified and monument as found, set, reset, replaced, or removed:

See sheet #2 for description (s):

FOUND MONUMENTS (NOT OF RECORD) THAT COULD BE DAMAGED OR DESTROYED BY A PROPOSED GAS LINE CONSTRUCTION PROJECT SPECIFIC TO THE PROPERTY AT 47 BOLINAS ROAD (APN 002-122-33). MONUMENTS WERE REFERENCED AS SHOWN ON PAGE 2 OF 2.

THE PURPOSE OF THIS CORNER RECORD IS TO PRESERVE THE LOCATION OF THE FOUND MONUMENTS (NOT OF RECORD) PRIOR TO CONSTRUCTION. NO ATTEMPT WAS OR WILL BE MADE TO DETERMINE THE RELATIONSHIP BETWEEN THE FOUND MONUMENTS AND ANY PROPERTY LINES, RIGHT-OF-WAY LINES, CENTERLINES OR OTHER MONUMENTS.

### SURVEYOR'S STATEMENT

This Corner Record was prepared by me or under my direction in conformance with the Professional Land Surveyors' Act on DECEMBER 10, 2018

Signed [Signature] P.L.S. or R.C.E. No. 8965



### COUNTY SURVEYOR'S STATEMENT

This Corner Record was received OCTOBER 29, 2018

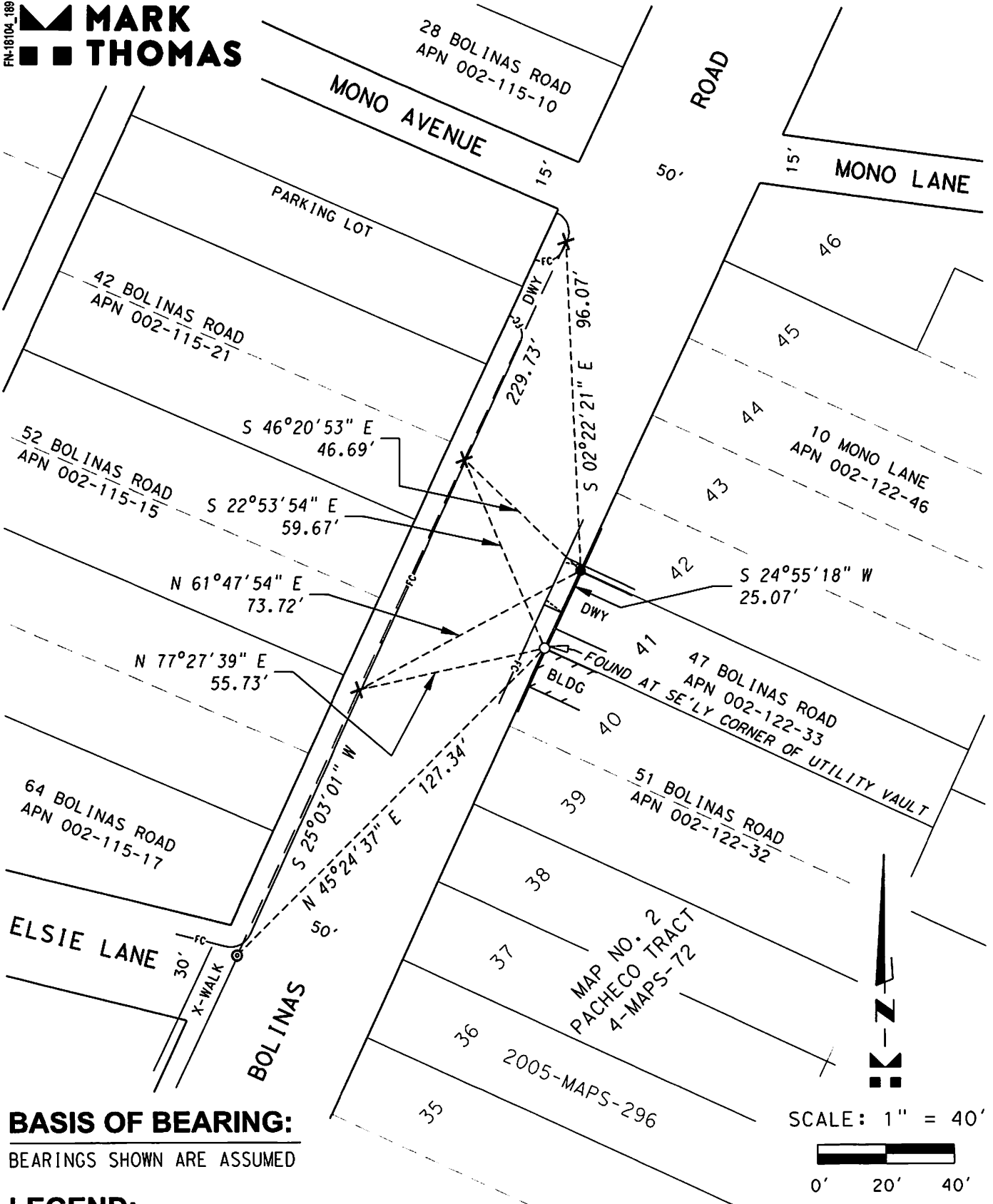
and examined and filed JAN. 30, 2019

Signed [Signature] P.L.S. or R.C.E. No. 9292

Title DEPUTY C.S.



County Surveyor's Comment \_\_\_\_\_



**BASIS OF BEARING:**  
 BEARINGS SHOWN ARE ASSUMED

**LEGEND:**

- FOUND STAKE TACK AND TAG LS 5814 NEAR NW'LY CORNER OF DRIVEWAY (NOT OF RECORD)
- FOUND STAKE TACK AND TAG PLS 7744 NEAR NW'LY CORNER OF BUILDING (NOT OF RECORD)
- × SET CUT CROSS FOR REFERENCE POINT ON TOP OF CONCRETE CURB
- ⊙ SET MAG NAIL AND SHINER FOR REFERENCE POINT NEAR END OF X-WALK STRIPE