



JERRICO ASSOCIATES

SUITE 27
77 MARK DRIVE
SAN RAFAEL, CA 94903

7442

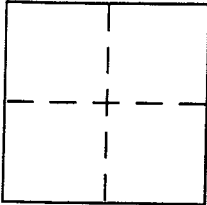
CORNER RECORD

Document Number 2-116-06

City of Fairfax

County of Marin, California

Brief Legal Description Pcl. 2-A 14 PM 28



CORNER TYPE

Government Corner Control
 Meander Property
 Rancho Other

Date of Survey October 20, 2001

COORDINATES (Optional)

N. _____
 E. _____
 Zone _____ NAD27 NAD83
 NAD83 Epoch _____
 Elev. _____
 Vert. Datum: NGVD29 NAVD88
 Meas. Units: Metric Imperial

Corner - Left as found Found and tagged Established Reestablished Rebuilt

Identification and type of corner found: Evidence used to identify or procedure used to establish or reestablish the corner:
Found survey points as shown on 14 PM 28.

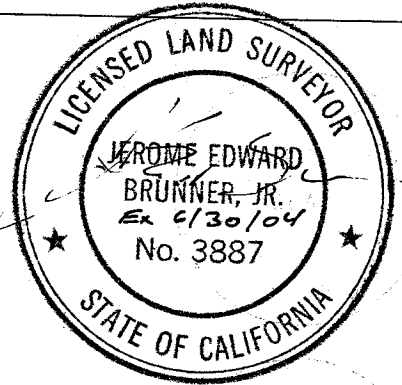
A description of the physical condition of the monument as found and as set or reset:

(A) (B) Set plug and tag LS 3887.

SURVEYOR'S STATEMENT

This Corner Record was prepared by me or under my direction in conformance with the Land Surveyor's Act on October 20, 2001

Signed J. E. Brunner P.L.S or R.C.E. No. LS 3887



COUNTY SURVEYOR'S STATEMENT

This Corner Record was received JANUARY 11, 2002

and examined and filed JANUARY 16, 2002

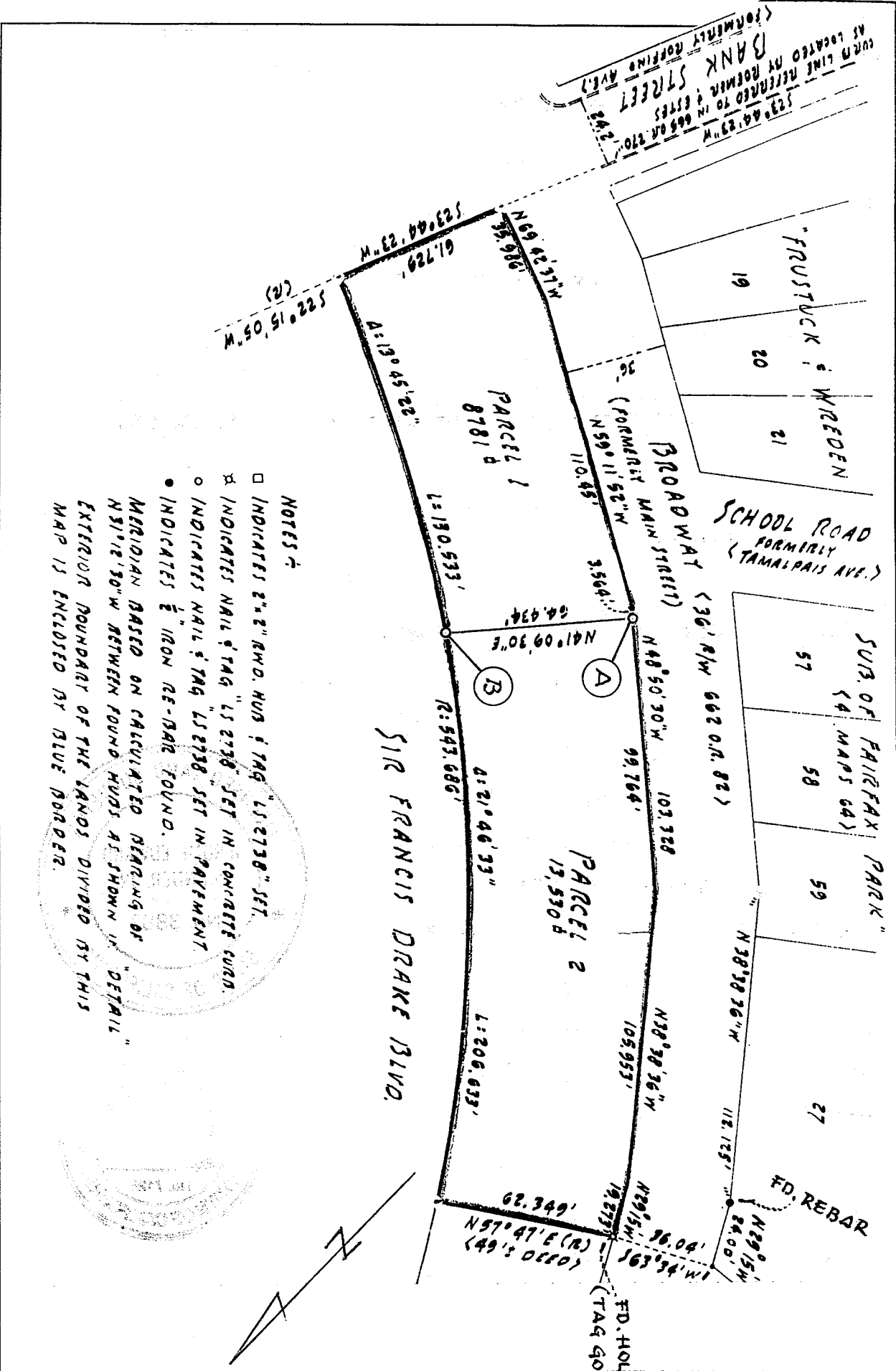
Signed Craig Tackabery P.L.S or R.C.E. No. 7128

Title DEPUTY

County Surveyor's Comment _____



14 PM 28



NOTES:

- INDICATES 2"x2" R.W.D. HUBS & TAG "LS 2738" SET.
 - ⊗ INDICATES NAIL & TAG "LS 2738" SET IN CONCRETE CURB.
 - INDICATES NAIL & TAG "LS 2738" SET IN PAVEMENT.
 - INDICATES ½" IRON RE-REBAR FOUND.
- MERIDIAN BASED ON CALCULATED BEARING OF N 81° 12' 30" W BETWEEN FOUND HUBS AS SHOWN IN "DETAIL" EXTERIOR BOUNDARY OF THE LANDS DIVIDED BY THIS MAP IS ENCLOSED BY BLUE BORDER.