

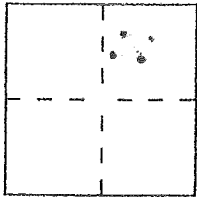
CORNER RECORD

Document Number 002-092-45

City of Fairfax

County of Marin, California

Brief Legal Description 002-092-45



CORNER TYPE

Government Corner Control
Meander Property
Rancho Other
Date of Survey _____

COORDINATES
(Optional)

N. _____
E. _____
Zone _____ Datum _____
Elev. _____

Corner — Left as found Found and tagged Established Reestablished Rebuilt

Identification and type of corner found: Evidence used to identify or procedure used to establish or reestablish the corner:

Found Points (see sketch map, over) per our
Record of Survey Map 2014 RS 94.

A description of the physical condition of the monument as found and as set or reset:

Set 1/2" rebar & plastic cap embossed
LS 5290 and nail & tag LS 5290
in rock (see sketch map)

SURVEYOR'S STATEMENT

This Corner Record was prepared by me or under my direction in conformance with
the Land Surveyors' Act on 11/14/16

Signed David Harp L.S. or R.C.E. Number LS 5290

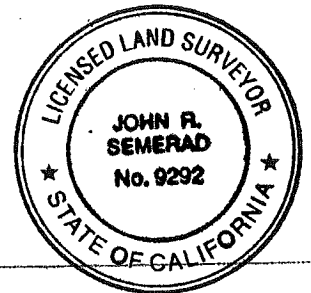


COUNTY SURVEYOR'S STATEMENT

This Corner Record was received NOVEMBER 21, 2016 and examined

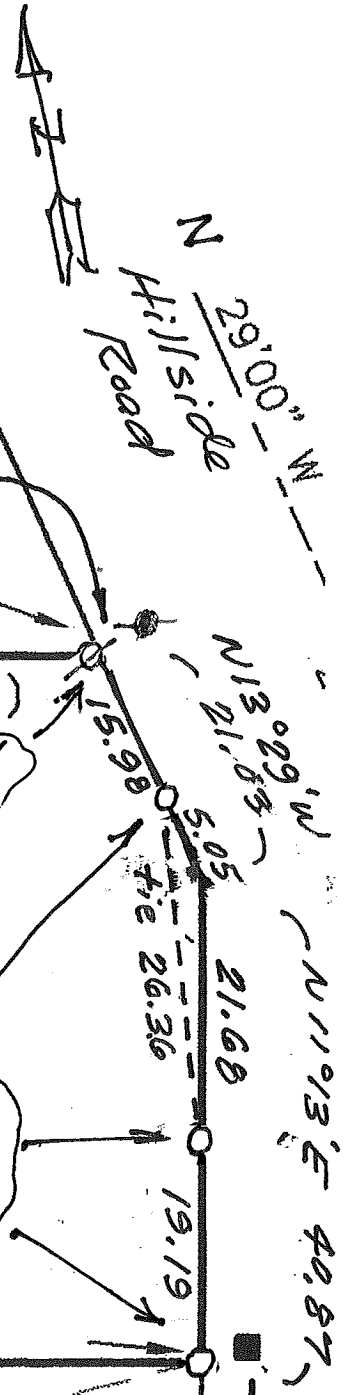
and filed MAY 24, 2017

Signed John R. Semerad PLS 9292 Title DEPUTY C.S.



County Surveyor's Comment _____

Scale:
1" = 15' ±



Point "B"
FD. 1/2" REBAR IN ROCK OUTCROPPING
N 61°24' E 0.38' FROM CORNER

S 78°55'00" E 91.35' CALC. (91.33' R1)

Indicates set nail & tag LS 5290 in rock

BAKER
D.N. 2003-78169

Indicates set 1/2" iron bar & cap LS 5290 (typ.)

N 11°05'00" E 60.0'

S 78°55'00" E

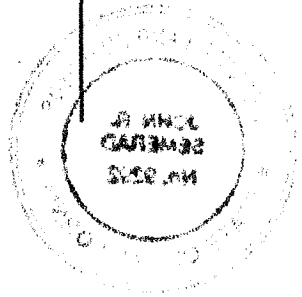
50.00

50.00

FD. 3/4" IRON PIPE & PLUG L.S. 4794

Point "A"
Hub Found Per
2014 RS 94

N 86°26' E 0.35



"Sketch Map"

Being a Portion of 2014 RS 94