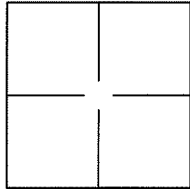


CORNER RECORD

Agency Index CR22-011
 Document Number _____

City of San Anselmo County of Marin, California

Brief Legal Description Lot 2, Block "B", "FLORIBEL MANOR", 5 Maps 21, as shown on 31 Surveys 99



CORNER TYPE

Government Corner Control
 Meander Property
 Rancho Other

Date of Survey October 5, 2021

COORDINATES (Optional)

N. _____ E. _____
 Elevation _____
 Units Metric U.S. Survey Foot
 Horizontal Datum _____
 Zone _____ Epoch Date _____
 Vertical Datum _____
 Complies with Public Resources Code §§8801-8819
 Complies with Public Resources Code §§88900-8902

PLS Act Ref.: **8765(d)** **8771** **8773** **Other:**
 Corner/Monument: Left as found Established Rebuilt Pre-Construction
 Found and tagged Reestablished Referenced Post-Construction

Narrative of corner identified and monument as found, set, reset, replaced, or removed:

See sheet #2 for description(s):

FOUND (2) 1/2" REBARS WITH CAPS "RCE 30465" PER 31 SURVEYS 99
 SET (1) 3/4" IRON PIPE WITH PLASTIC PLUG & TACK "LS 7735"
 SET (1) 3/4" BRASS TAG WITH NAIL "LS 7735"

SURVEYOR'S STATEMENT

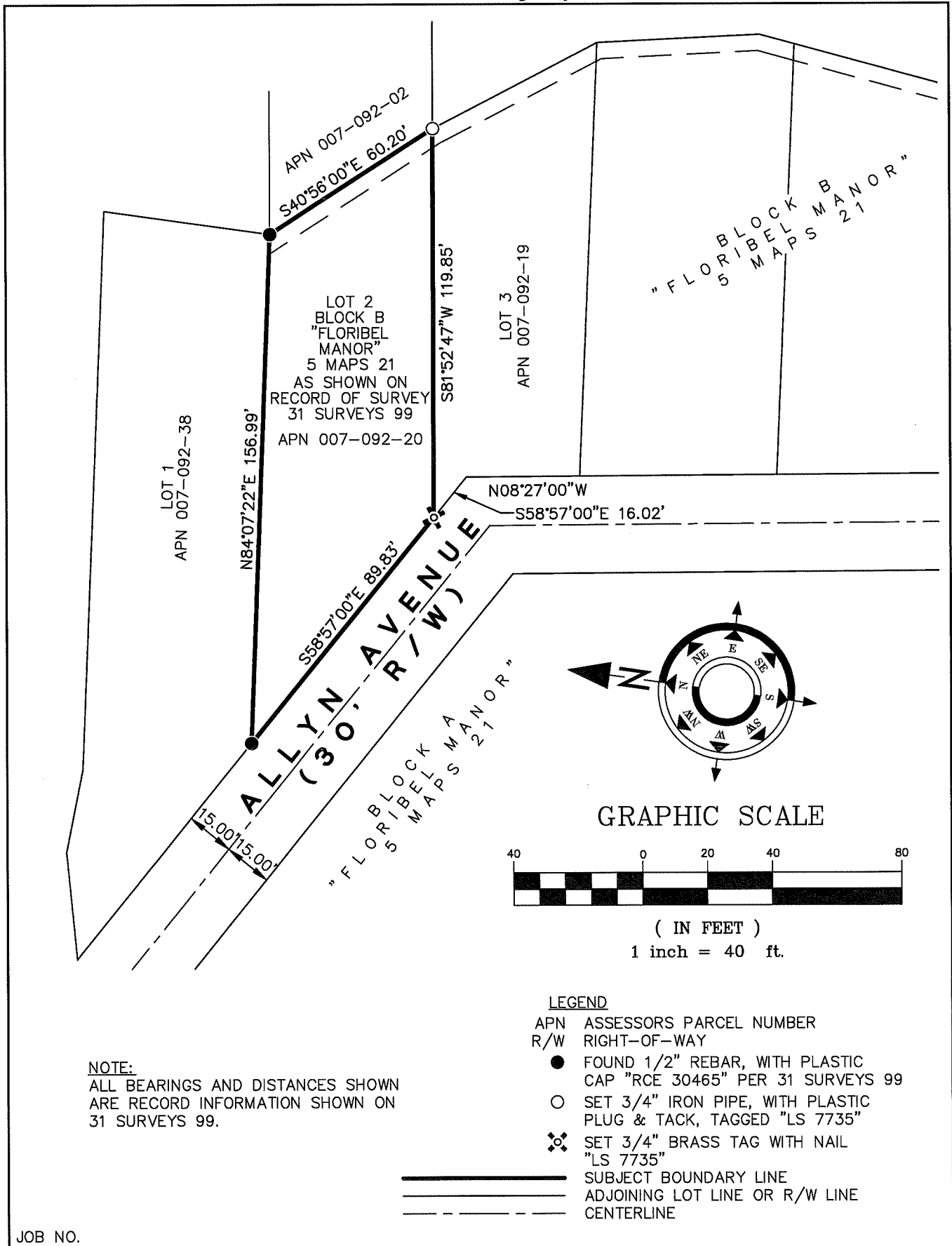
This Corner Record was prepared by me or under my direction in conformance with
 the Professional Land Surveyor's Act on January 15, 2022
 Signed _____ P.L.S. or R.C.E. No. PLS 7735



COUNTY SURVEYOR'S STATEMENT

This Corner Record was received 1.24.22
 and examined and filed 1.31.22
 Signed [Signature] P.L.S. or R.C.E. No. 9292
 Title DEPUTY
 County Surveyor's Comment:





NOTE:
ALL BEARINGS AND DISTANCES SHOWN ARE RECORD INFORMATION SHOWN ON 31 SURVEYS 99.

JOB NO.