

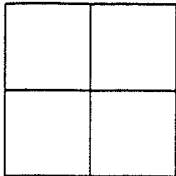
CORNER RECORD

Document Number _____ APN: 002-032-04

City of FAIRFAX

County of Marin State of California.

Brief Legal Description: LOT 5 - MAP NO. 1 OF THE CASCADES, BLOCKS 2 & 5; 4 R.M. 74



CORNER TYPE:

Government Corner Control
Meander Property
Rancho Other
Date of Survey _____

COORDINATES:

[Optional]

N> _____
E> _____
Zone _____ Datum _____
Elev> _____

CORNER: ----- Left as found Found & Tagged Established Reestablished Rebuilt

Identification & Type of Corner Found: Evidence used to identify or procedure used to establish or reestablish the corner:

FOUND STREET MONUMENTS PER MAP NO. 1 OF THE CASCADES, BLOCKS 2 & 5; 4 R.M. 74

A description of the physical condition of the monument as found and as set or reset:
Original corners not found: Set points as shown on reverse.



SURVEYOR'S STATEMENT:

The corner record was prepared by me or under my direction in conformance with the Land Surveyors' Act on JAN 2004 2004

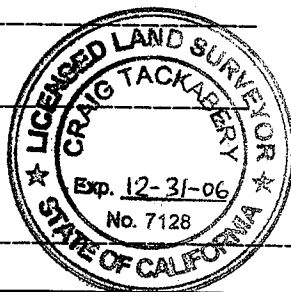
Signed: Douglas J Matteson RCE# 18200

COUNTY SURVEYORS STATEMENT:

This corner record was received: DECEMBER 6, 2005

and filed JANUARY 6, 2006

Signed: [Signature] Title: COUNTY SURVEYOR



COUNTY SURVEYOR'S COMMENT _____

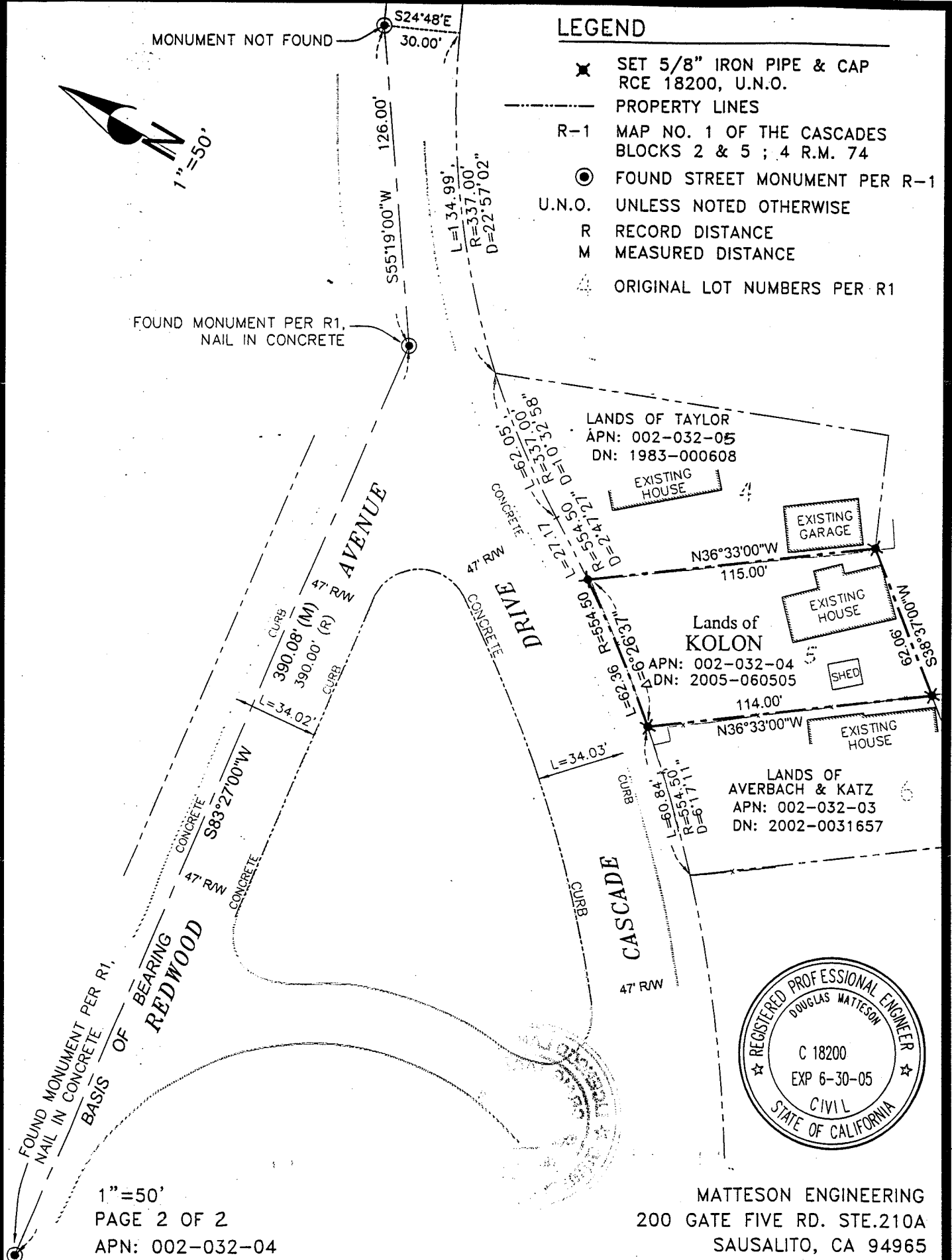


MONUMENT NOT FOUND
 S24°48'E
 30.00'

FOUND MONUMENT PER R1,
 NAIL IN CONCRETE

LEGEND

- ✱ SET 5/8" IRON PIPE & CAP
 RCE 18200, U.N.O.
- PROPERTY LINES
- R-1 MAP NO. 1 OF THE CASCADES
 BLOCKS 2 & 5 ; 4 R.M. 74
- FOUND STREET MONUMENT PER R-1
- U.N.O. UNLESS NOTED OTHERWISE
- R RECORD DISTANCE
- M MEASURED DISTANCE
- ⊠ ORIGINAL LOT NUMBERS PER R1



FOUND MONUMENT PER R1,
 NAIL IN CONCRETE
 BASIS OF BEARING
 REDWOOD

1"=50'
 PAGE 2 OF 2
 APN: 002-032-04

LANDS OF TAYLOR
 APN: 002-032-05
 DN: 1983-000608

LANDS OF KOLON
 APN: 002-032-04
 DN: 2005-060505

LANDS OF AVERBACH & KATZ
 APN: 002-032-03
 DN: 2002-0031657



MATTESON ENGINEERING
 200 GATE FIVE RD. STE.210A
 SAUSALITO, CA 94965