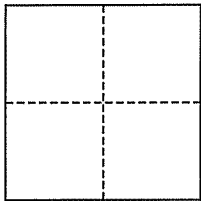


CORNER RECORD

Document Number 002-025-22
County of Marin, California

City of Fairfax

Brief Legal Description Lots 163&164, 2 RM 32



CORNER TYPE

Government Corner Control
Meander Property
Rancho Other
Date of Survey June 28, 2011

COORDINATES (Optional)

N. _____
E. _____
Zone _____ NAD27 NAD83
NAD83 Epoch _____
Elev. _____
Vert. Datum: NGVD29 NAVD88
Meas. Units: Metric Imperial

Corner- Left as found Found and tagged Established Reestablished Rebuilt

Identification and type of corner found: Evidence used to identify or procedure used to establish or reestablish the corner:
Found Iron Pipe & Plug, RCE 30465, along Forrest Ave., per 2011 RS 42.

A description of the physical condition of the monument as found and as set or reset: Set Iron Pipe & Plug and Rebar & Cap, RCE 30465, in accordance with 2011 RS 42, as shown on this Map.

SURVEYOR'S STATEMENT

This corner Record was prepared by me or under my direction in conformance with
the Land Surveyor's Act on November 2, 2011

Signed [Signature] P.L.S. or R.C.E. No. 30465



COUNTY SURVEYOR'S STATEMENT

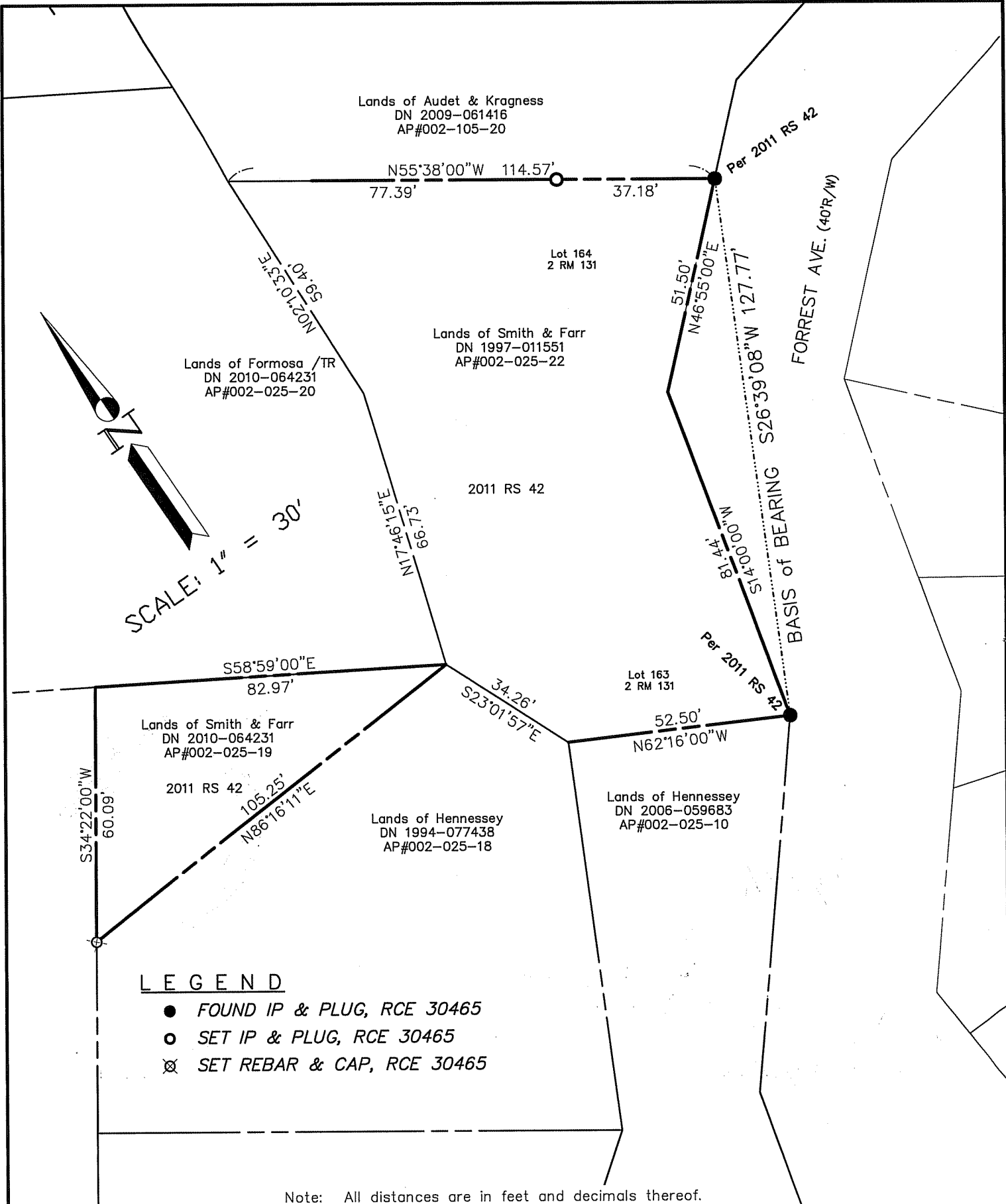
This Corner Record was received JULY 12, 2011
and examined and filed NOVEMBER 8, 2011

Signed [Signature] P.L.S. or R.C.E. No. 7128

Title COUNTY SURVEYOR



County Surveyor's Comment _____



Lands of Audet & Kragness
DN 2009-061416
AP#002-105-20

Lands of Formosa / TR
DN 2010-064231
AP#002-025-20

Lands of Smith & Farr
DN 1997-011551
AP#002-025-22

S58°59'00"E
82.97'

Lands of Smith & Farr
DN 2010-064231
AP#002-025-19

2011 RS 42

Lands of Hennessey
DN 1994-077438
AP#002-025-18

Lands of Hennessey
DN 2006-059683
AP#002-025-10

LEGEND

- FOUND IP & PLUG, RCE 30465
- SET IP & PLUG, RCE 30465
- ⊗ SET REBAR & CAP, RCE 30465

Note: All distances are in feet and decimals thereof.

SHEET	1	OF	1
SCALE:	1" = 30'	DESIGN:	PR
DATE:	Aug 2011	DRAWN:	PR
FILE:	2010-061	CHECKED:	J.L.H
2010-061\DWG\10-061-BASE,COR-REC			

J.L. ENGINEERING
CIVIL ENGINEERS-LAND SURVEYORS
1539 4th ST., SAN RAFAEL, CA. 94901 (415) 457-6647

Corner Record
Lands of Smith & Farr - 336 Forrest Ave.
APN 002-025-22, Fairfax, Marin County, CA