

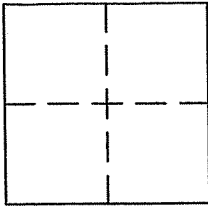
CORNER RECORD

Document Number APN 002-022-39

City of FAIRFAX

County of MARIN, California

Brief Legal Description FORMERLY LANDS OF PACE, 2992 OR 67



CORNER TYPE

Government Corner Control
Meander Property
Rancho Other
Date of Survey SEPT. 5, 2008

COORDINATES (Optional)

N. _____
E. _____
Zone _____ NAD27 NAD83
NAD83 Epoch _____
Elev. _____
Vert. Datum: NGVD29 NAVD88
Meas. Units: Metric Imperial

Corner - Left as found Found and tagged Established Reestablished Rebuilt

Identification and type of corner found: Evidence used to identify or procedure used to establish or reestablish the corner:

FOUND MONUMENTS PER 17 OS 83 AS SHOWN ON REVERSE.

A description of the physical condition of the monument as found and as set or reset:

SET 3/4" IP TAGGED PLS 5296 @ 7.00 OFFSET (S71°36'08"E) FROM PROPERTY ANGLE POINT,
AS SHOWN ON REVERSE.

SURVEYOR'S STATEMENT

This Corner record was prepared by me or under my direction in conformance with
the Land Surveyor's Act on APRIL 20, 2009

Signed [Signature] P.L.S. or R.C.E. No. PLS 5296

COUNTY SURVEYOR'S STATEMENT

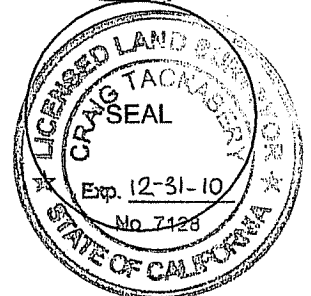
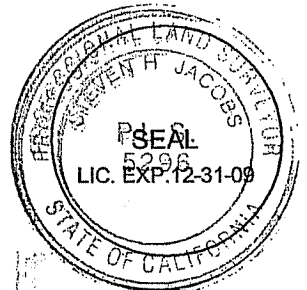
This Corner Record was received APRIL 23, 2009

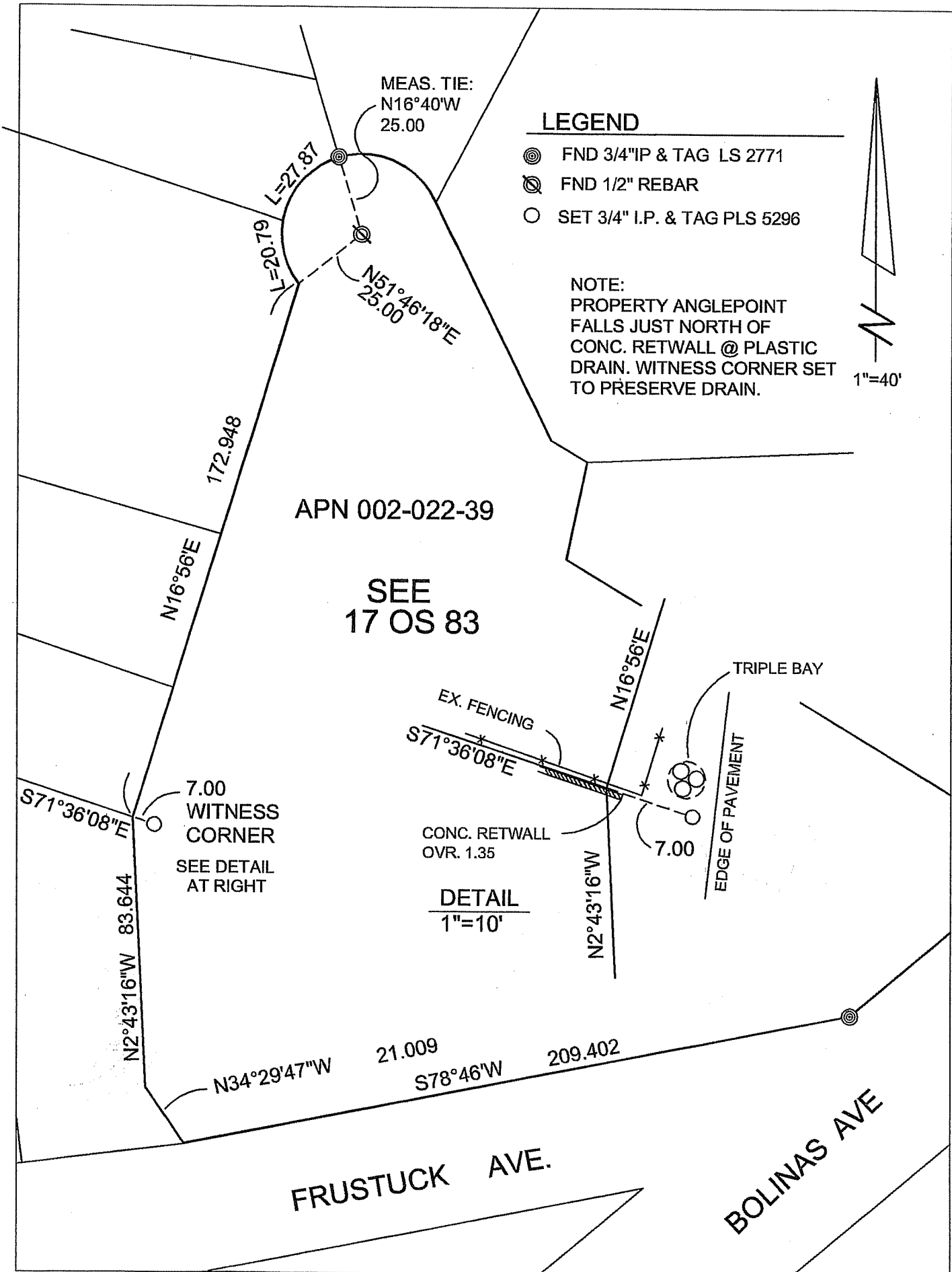
and examined and filed MAY 7, 2009

Signed [Signature] P.L.S. or R.C.E. No. 7128

Title COUNTY SURVEYOR

County Surveyor's Comment _____

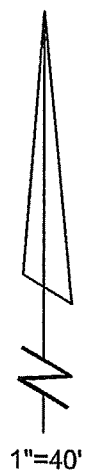




LEGEND

- ⊙ FND 3/4"IP & TAG LS 2771
- ⊗ FND 1/2" REBAR
- SET 3/4" I.P. & TAG PLS 5296

NOTE:
 PROPERTY ANGLEPOINT
 FALLS JUST NORTH OF
 CONC. RETWALL @ PLASTIC
 DRAIN. WITNESS CORNER SET
 TO PRESERVE DRAIN.



APN 002-022-39

SEE
 17 OS 83

TRIPLE BAY

EX. FENCING
 S71°36'08"E

7.00
 WITNESS
 CORNER
 SEE DETAIL
 AT RIGHT

CONC. RETWALL
 OVR. 1.35

DETAIL
 1"=10'

EDGE OF PAVEMENT

FRUSTUCK AVE.

BOLINAS AVE