

CORNER RECORD

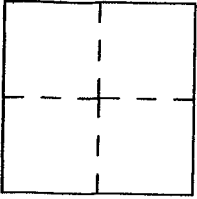
002-022-32 &

Document number A.P.N. 003-193-12

City of FAIRFAX

County of MARIN, California

Legal Description ^{#182} LOT 187 AS SHOWN UPON UNRECORDED MAP NO. 2, FAIRFAX PARK TRACT & 10 O.S. 39



CORNER TYPE

Government Corner Control
Meander Property
Rancho Other
Date of Survey _____

COORDINATES

N. _____
E. _____
Zone _____ Datum _____
Elev. _____

Corner-- Left as found found and tagged Established Reestablished Rebuilt

Identification and type of corner found: Evidence used to identify or procedure used to establish or reestablish the corner: UTILIZED FOUND 2"X2" HUB & BRASS TAG, R.C.E 11,181, PER 10 O.S. 39, AS A BASIS OF BEARINGS TO MONUMENT PROPERTY LINE POINTS AS SHOWN UPON ATTACHED DRAWING.

A description of the physical condition of the monument as found and as set or reset. SAID 2"X2" HUBS MEASURED PER 10 O.S. 39

SURVEYOR'S STATEMENT

This Corner Record was prepared by me or under my direction in conformance with the Land Surveyor's Act on June, 21 2003.

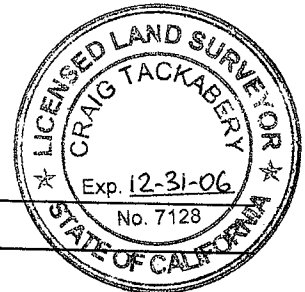
Signed Stephen Flatland L.S. Number 7744



COUNTY SURVEYOR'S STATEMENT

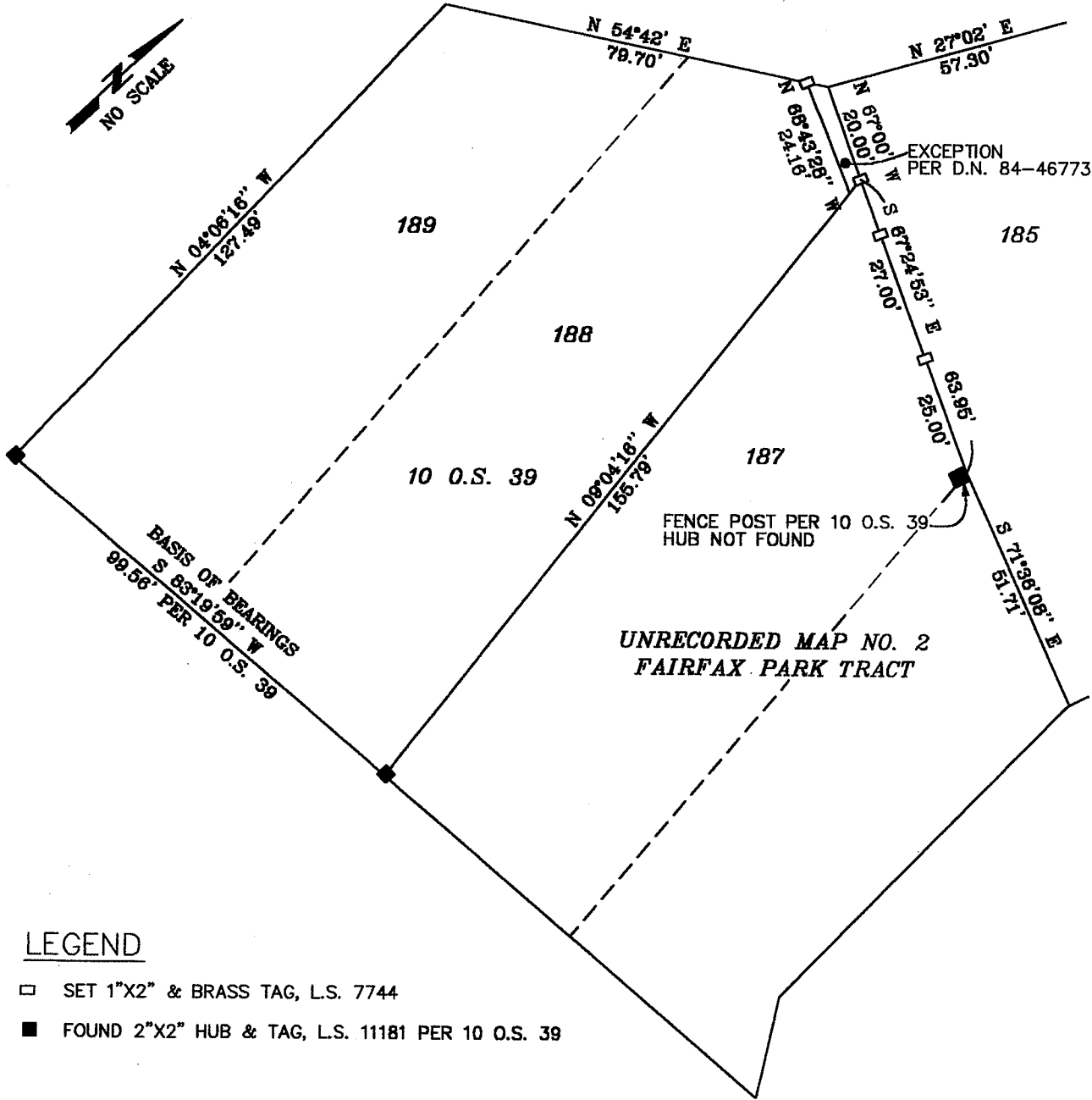
This Corner Record was received JUNE 24, 2004 and examined and filed October 13, 2004

Signed [Signature] Title COUNTY SURVEYOR



County Surveyor's Comment _____

FRUSTUCK AVENUE (40' R/W)



LEGEND

- SET 1"X2" & BRASS TAG, L.S. 7744
- FOUND 2"X2" HUB & TAG, L.S. 11181 PER 10 O.S. 39