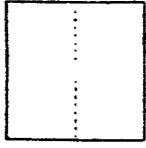


CORNER RECORD

A.P. # 1-261-75

COUNTY OF MARIN T. R. CALIFORNIA MERIDIAN
CORNER TYPE GOV'T. CORNER MEANDER RANCHO CONTROL OTHER
CORNER IDENTIFICATION - DATE OF VISIT JAN. 28, 1988



CORNER - LEFT AS FOUND FOUND AND TAGGED REESTABLISHED OBLITERATED CORNER RESULT

PHYSICAL DESCRIPTION OF CORNER FOUND, EVIDENCE AND METHOD USED TO IDENTIFY OR REESTABLISH

BASED ON MONUMENTS SHOWN ON "MARINDA OAKS SUB. SIX", 9 R.M. 65

SET PER LOT 87, 8 RM 52

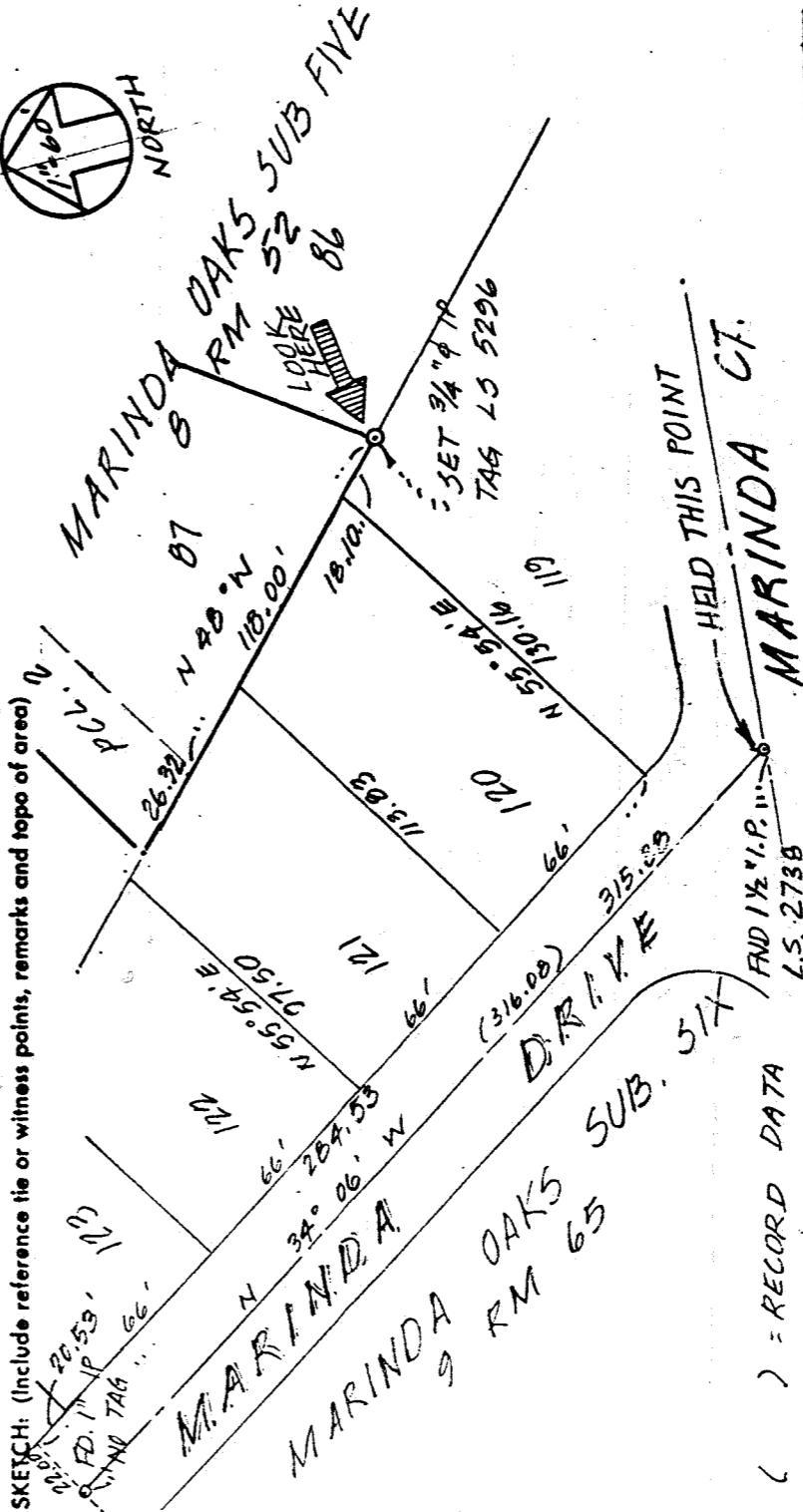
PHYSICAL DESCRIPTION OF MONUMENTS RESULT OR PERPETUATED

SET 3/4" I.P., TAG NO. L.S. 5296

A.P. NO. 1-261-75

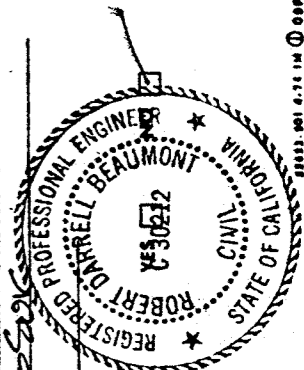
CALIFORNIA COORDINATE SYSTEM ORDER: FIRST SECOND THIRD
STATIONS USED: NGS (USC & GS) STATE COUNTY OTHER STATION
ZONE ELEVATION NORTHINGS (N) EASTINGS (E)

(Fold)



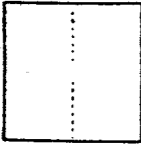
SURVEYOR'S CERTIFICATE
THIS CORNER RECORD WAS PREPARED BY ME OR UNDER MY DIRECTION IN CONFORMANCE WITH THE LAND SURVEYORS ACT ON FEB. 4, 1988
SIGNED: [Signature]
L.S. or R.C.E. No.: L.S. 5296

COUNTY SURVEYOR'S CERTIFICATE
THE CORNER RECORD WAS RECEIVED AND EXAMINED AND FILED 5/10 1988
BY: [Signature]
TITLE: Deed
DOCUMENT No.
STATEMENT ON BACK OF SHEET
EX. 3-31-88



CORNER RECORD

COUNTY OF MARIN T. R. MERIDIAN CALIFORNIA
 CORNER TYPE: GOVT. CORNER MEANDER RANCHO CONTROL OTHER
 CORNER IDENTIFICATION — DATE OF VISIT JAN. 28, 1988 1988



CORNER — LEFT AS FOUND FOUND AND TAGGED REESTABLISHED OBLITERATED CORNER RESULT

PHYSICAL DESCRIPTION OF CORNER FOUND; EVIDENCE AND METHOD USED TO IDENTIFY OR REESTABLISH

BASED ON MONUMWNTS SHOWN ON "MARINDA OAKS SUB. SIX", 9 R.M. 65.

SET PER PARCEL TWO, DOC. NO. 87-39621

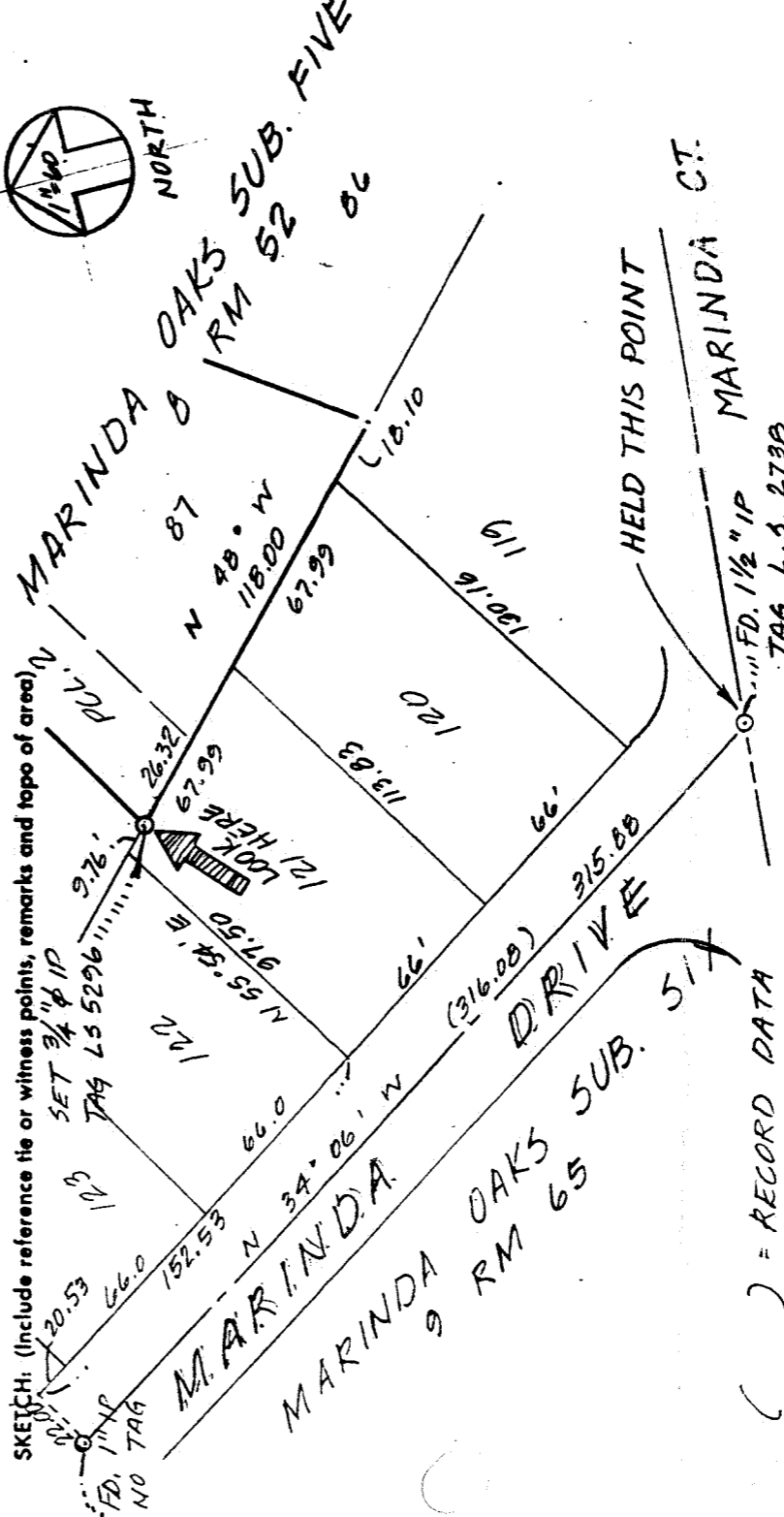
PHYSICAL DESCRIPTION OF MONUMENTS RESULT OR PERPETUATED

SET 3/4 " I.P. TAG NO. L.S. 5296.

A.P. No. 1-261-75

CALIFORNIA COORDINATE SYSTEM ORDER: FIRST SECOND THIRD STATION _____
 STATIONS USED: NGS (USC & GS) COUNTY OTHER EASTINGS (X) _____
 ZONE _____ ELEVATION _____ NORTHINGS (Y) _____

(Fold)



SURVEYOR'S CERTIFICATE
 THIS CORNER RECORD WAS PREPARED BY ME OR UNDER MY DIRECTION IN CONFORMANCE WITH THE LAND SURVEYORS ACT ON FEB. 4, 1988
 SIGNED: [Signature]
 L.S. or R.C.E. No.: A.S. 5296
 5296
 SEA STATE OF CALIFORNIA

COUNTY SURVEYOR'S CERTIFICATE
 THE CORNER RECORD WAS RECEIVED 2/12 1988 AND EXAMINED AND FILED 2/11 1988
 BY: RDP
 TITLE: Dep Co SA
 DOCUMENT No. _____
 STATEMENT ON BACK OF SURVEYOR'S CERTIFICATE
EX. 3-21-88

