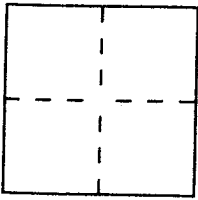


CORNER RECORD

Document Number A.P. # 1-261-14
County of MARIN, California

City of FAIRFAX
Brief Legal Description LOT 81 @ R.M. 52 - APN 01-261-14 #71 San Gabriel Dr.



CORNER TYPE

Government Corner Control
Meander Property
Rancho Other
Date of Survey _____

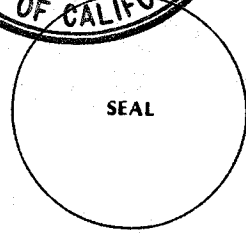
COORDINATES (Optional)

N. _____
E. _____
Zone _____ Datum _____
Elev. _____

Corner — Left as found Found and tagged Established Reestablished Rebuilt

Identification and type of corner found: Evidence used to identify or procedure used to establish or reestablish the corner:
See Sketch

A description of the physical condition of the monument as found and as set or reset:
See Sketch



SURVEYOR'S STATEMENT

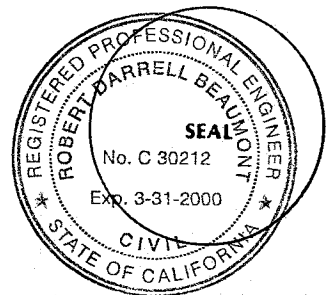
This Corner Record was prepared by me or under my direction in conformance with the Land Surveyors' Act on June 26 1996.

Signed Michael A. Brogan L.S. or R.C.E. Number 5767

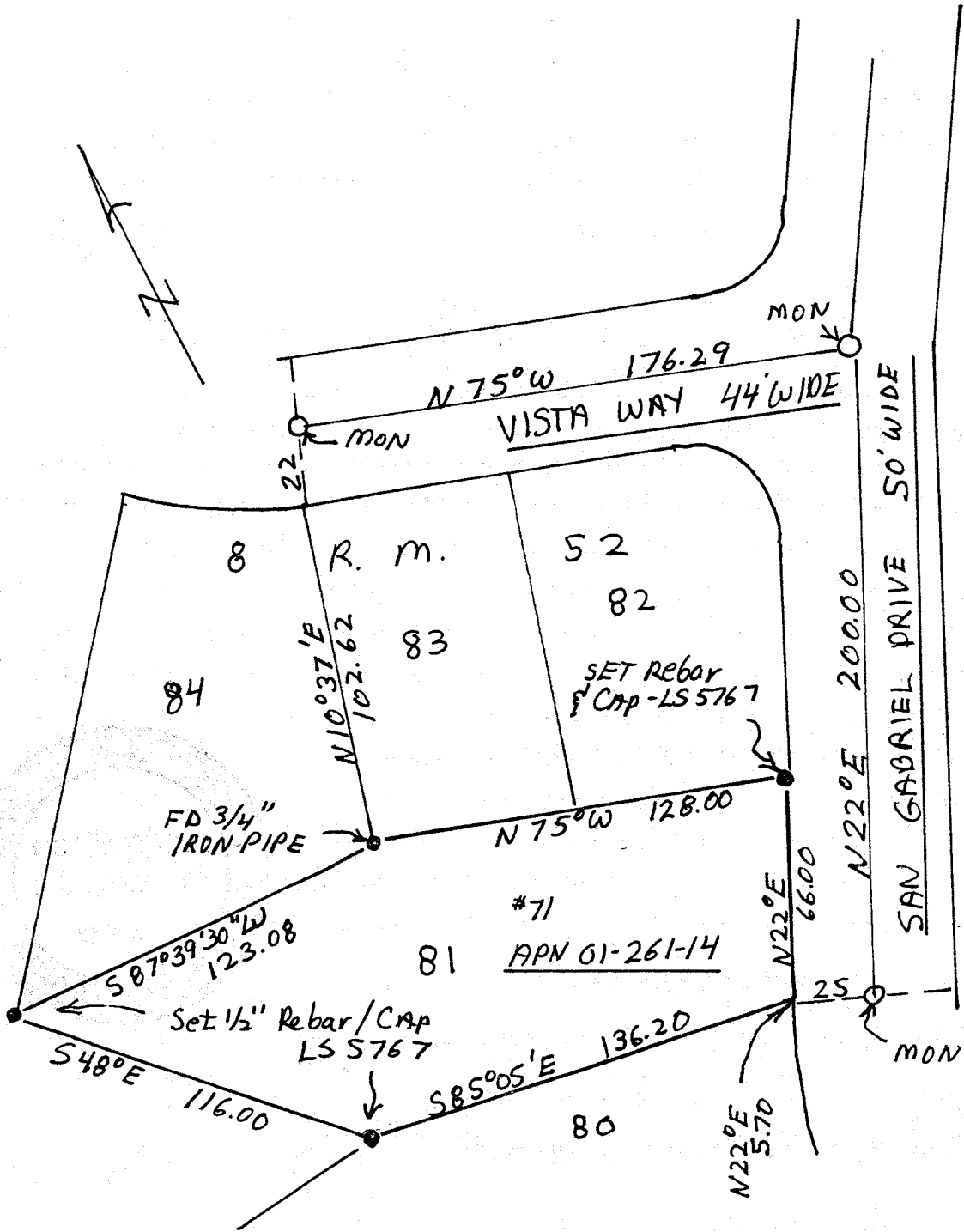
COUNTY SURVEYOR'S STATEMENT

This Corner Record was received JULY 1 1996 and examined and filed 7-2 1996.

Signed [Signature] Title DCS



County Surveyor's Comment _____



Corner Record
 Lot 81
 8 R.M. 52

M. BROGAN & ASSOCIATES, INC.
 319 Miller Ave
 Mill Valley, CA 94941
 388-7865
 Job # 5194
 June 1996