

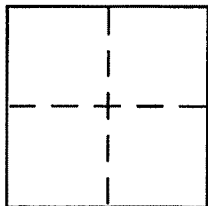
**CORNER RECORD**

Document Number APN 001-261-12

City of FAIRFAX

County of MARIN, California

Brief Legal Description LOT 80 OF 8 MAPS/52, ORMC



**CORNER TYPE**

Government Corner  Control   
Meander  Property   
Rancho  Other   
Date of Survey 16 JAN 03

**COORDINATES (Optional)**

N. \_\_\_\_\_  
E. \_\_\_\_\_  
Zone \_\_\_\_\_ NAD27  NAD83   
NAD83 Epoch \_\_\_\_\_  
Elev. \_\_\_\_\_  
Vert. Datum: NGVD29  NAVD88   
Meas. Units: Metric  Imperial

Corner - Left as found  Found and tagged  Established  Reestablished  Rebuilt

Identification and type of corner found: Evidence used to identify or procedure used to establish or reestablish the corner:

SEE PAGE 2

A description of the physical condition of the monument as found and as set or reset:

SEE PAGE 2

**SURVEYOR'S STATEMENT**

This Corner Record was prepared by me or under my direction in conformance with the Land Surveyor's Act on JANUARY 17 2003

Signed [Signature] P.L.S or R.C.E. No. 6784



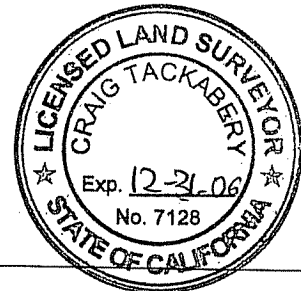
**COUNTY SURVEYOR'S STATEMENT**

This Corner Record was received JANUARY 23, 2003

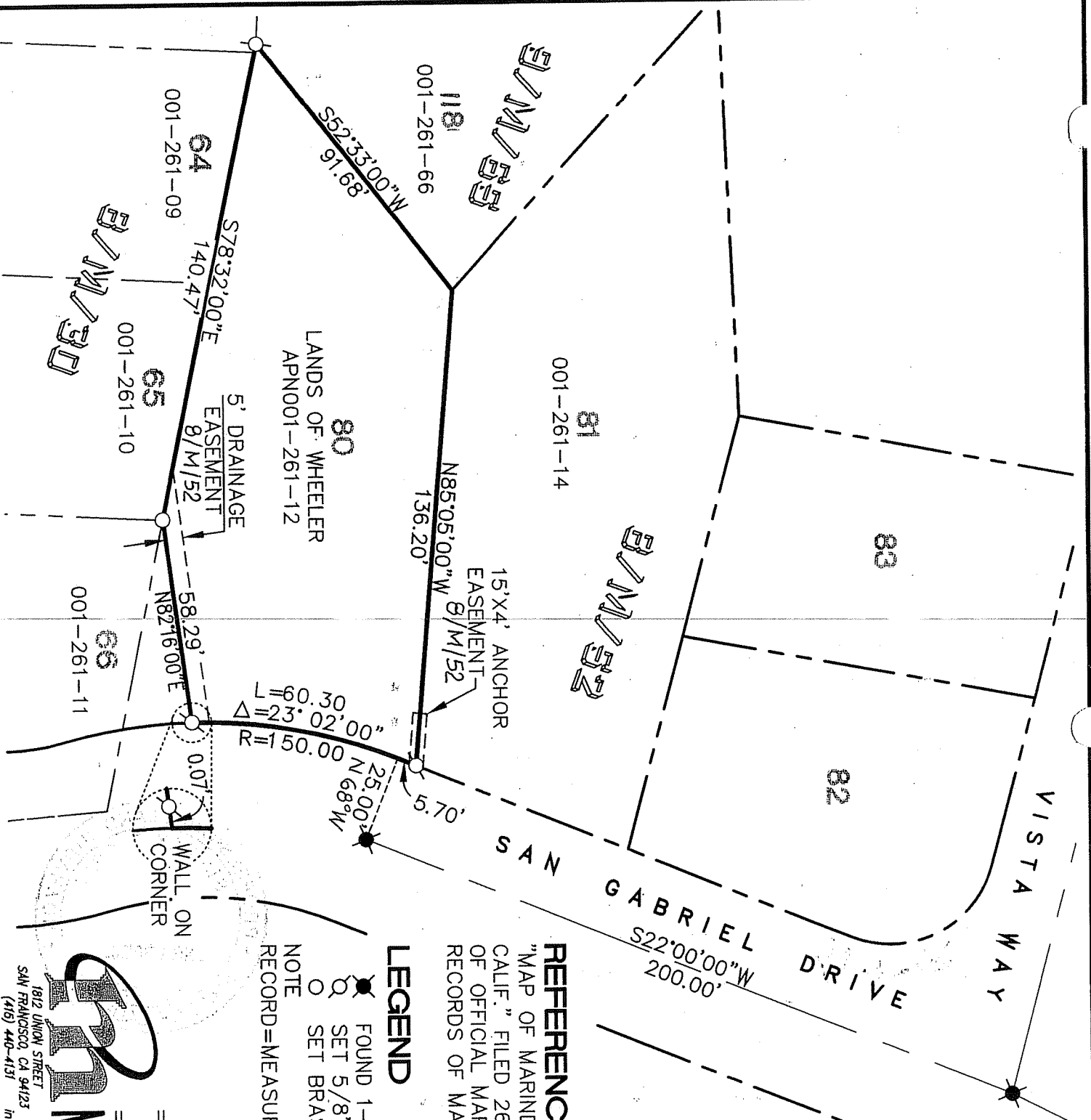
and examined and filed JANUARY 29, 2003

Signed [Signature] P.L.S or R.C.E. No. 7128

Title DEPUTY



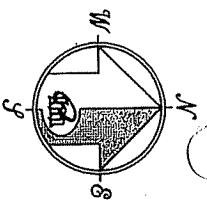
County Surveyor's Comment \_\_\_\_\_



**REFERENCE**  
 "MAP OF MARINDA OAKS SUB. FIVE, FAIRFAX, CALIF." FILED 26 APRIL 1955 IN VOLUME 8 OF OFFICIAL MAPS, AT PAGE 52, OFFICIAL RECORDS OF MARIN COUNTY.

**LEGEND**

- FOUND 1-1/4" IP, BRASS NAIL & TAG, LS
- SET 5/8" REBAR & CAP, PLS 6784
- SET BRASS NAIL & TAG, PLS 6784
- NOTE  
 RECORD=MEASURED



CORNER RECORD

**EM MERIDIAN SURVEYING ENGINEERING, INC.**  
 1812 UNION STREET  
 SAN FRANCISCO, CA 94123  
 (415) 440-4131  
 info@meridiansurvey.com  
 100 DRAKES LANDING RD, #164  
 GREENBRAE, CA 94123  
 (415) 461-1241