



JERRICO ASSOCIATES

SUITE 27
77 MARK DRIVE
SAN RAFAEL, CA 94903

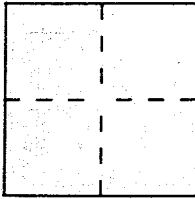
7049

CORNER RECORD

Document Number A.P. Ptn. 1-204-67

City of Fairfax County of Marin, California

Brief Legal Description Lot 273 PH Jordan Sub. of Ridgeway Park 2 RM 80



CORNER TYPE

Government Corner Control
Meander Property
Rancho Other
Date of Survey Oct. 26 1993

COORDINATES (Optional)

N. _____
E. _____
Zone _____ Datum _____
Elev. _____

Corner — Left as found Found and tagged Established Reestablished Rebuilt

Identification and type of corner found: Evidence used to identify or procedure used to establish or reestablish the corner:

Curb line meridian going up Maple Avenue as N 20° 15' W

(E) Found cor. 269/270 on Maple (1/2" IP found by Lockton in his survey S-2336 (Dec. 1958)).

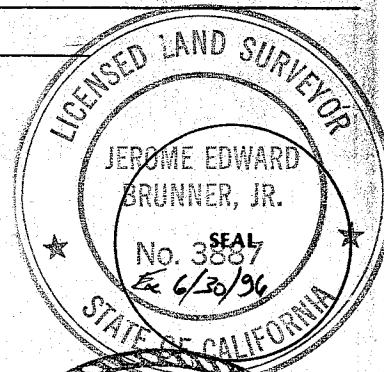
A description of the physical condition of the monument as found and as set or reset:

- (A) Set nail and tag LS 3887 in cone. wall cor.
- (B) Set #5 rebar and cap LS 3887
- (C) Set #5 rebar and cap LS 3887
- (D) Set #5 rebar and cap LS 3887

SURVEYOR'S STATEMENT

This Corner Record was prepared by me or under my direction in conformance with the Land Surveyors' Act on Oct. 26 19 93.

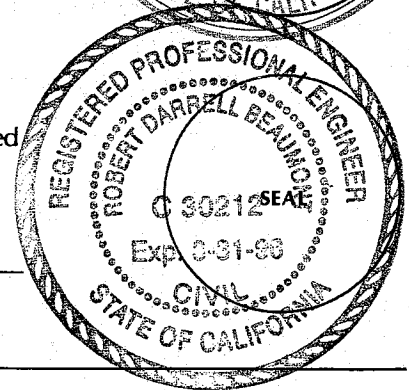
Signed [Signature] LS or R.C.E. Number LS 3887



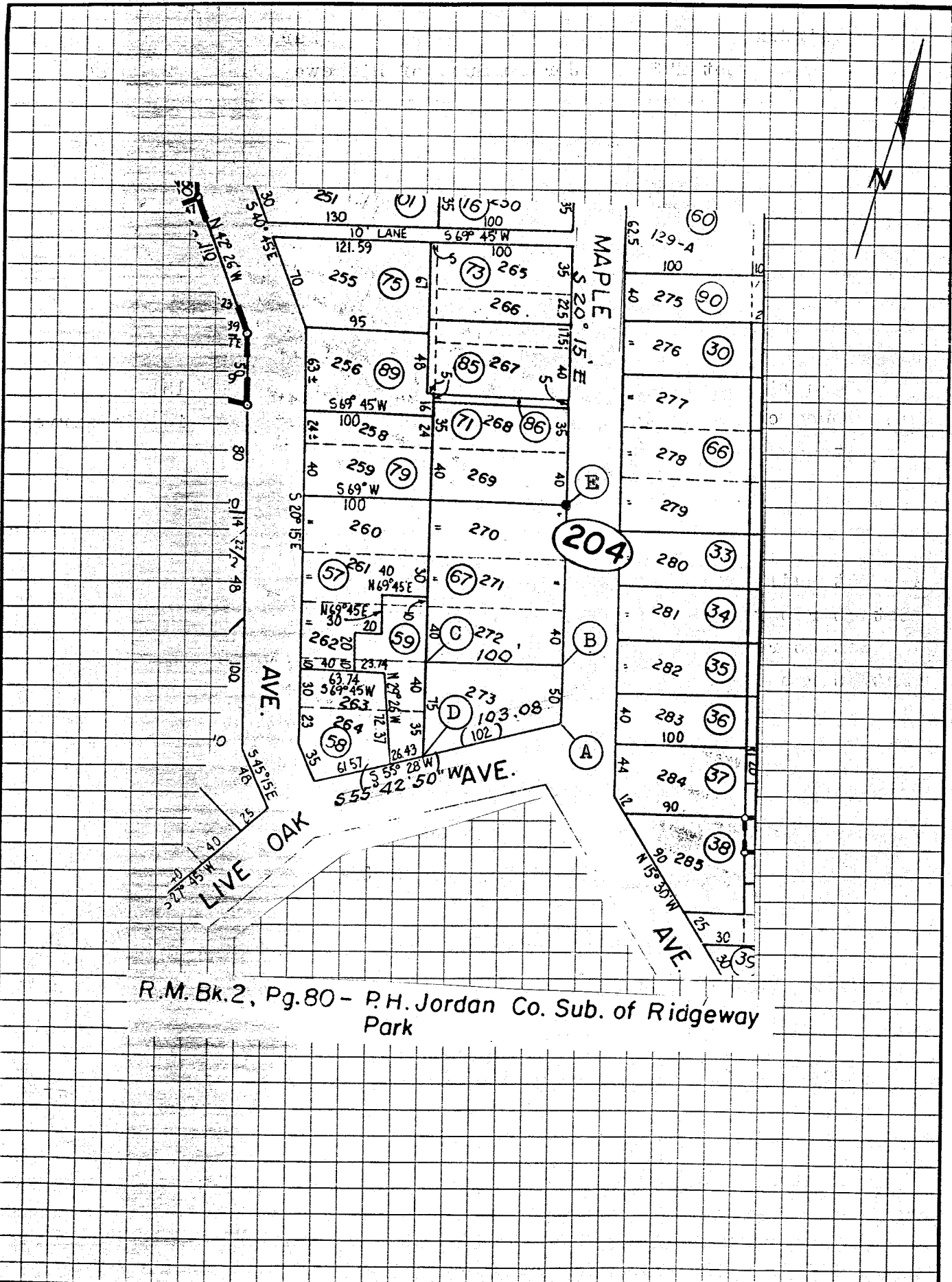
COUNTY SURVEYOR'S STATEMENT

This Corner Record was received 11-18 19 93 and examined and filed 11-18 19 93.

Signed [Signature] Title DCS



County Surveyor's Comment _____



R.M. Bk. 2, Pg. 80 - P.H. Jordan Co. Sub. of Ridgeway Park