

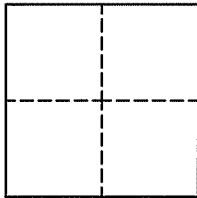
CORNER RECORD

Document Number APN 001-150-36

Town of Fairfax

County of Marin, California

Brief Legal Description Being the southwest corner of the Lands of Fairfax Community Church as shown on that Record of Survey filed in Book 2003 of Maps at Page 152, Marin County Records.



CORNER TYPE

Government Corner Control
Meander Property
Rancho Other
Date of Survey July 9, 2012

COORDINATES (Optional)

N. _____
E. _____
Zone _____ Datum _____
Elev. _____
Vert. Datum: NGVD29 NAVD88
Meas. Units: Metric Imperial

Corner — Left as found Found and tagged Established Reestablished Rebuilt

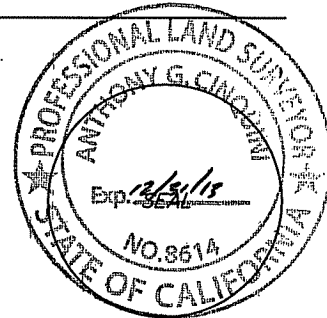
Identification and type of corner found: Evidence used to identify or procedure used to establish or reestablish the corner:
Prior to construction the location of five found magnetic nail with brass washer stamped "Cinquini & Passarino PLS 4760" along the north east corner of the intersection of Oak Manor Drive and Sir Francis Drake Boulevard were referenced by setting a magnetic nail as a common line point outside the area of construction, then setting a magnetic nails at an offset of 12 feet between the found monuments and the set line magnetic nail. The reference line points were then reoccupied to reestablish four of the nails with washers that were destroyed. One original nail and washer was undisturbed after construction

A description of the physical condition of the monument as found and as set or reset: _____
The found nails with washers were in stable condition.
New brass tags stamped PLS 8614 were reset with either a nail or rivet as shown on page 2.

SURVEYOR'S STATEMENT

This Corner Record was prepared by me or under my direction in conformance with the Land Surveyor's Act on 7/24/2012

Signed *Anthony G. Cinquini* P.L.S. or R.C.E. No. 8614



COUNTY SURVEYOR'S STATEMENT

This Corner Record was received JULY 26, 2012
and examined and filed AUGUST 20, 2012

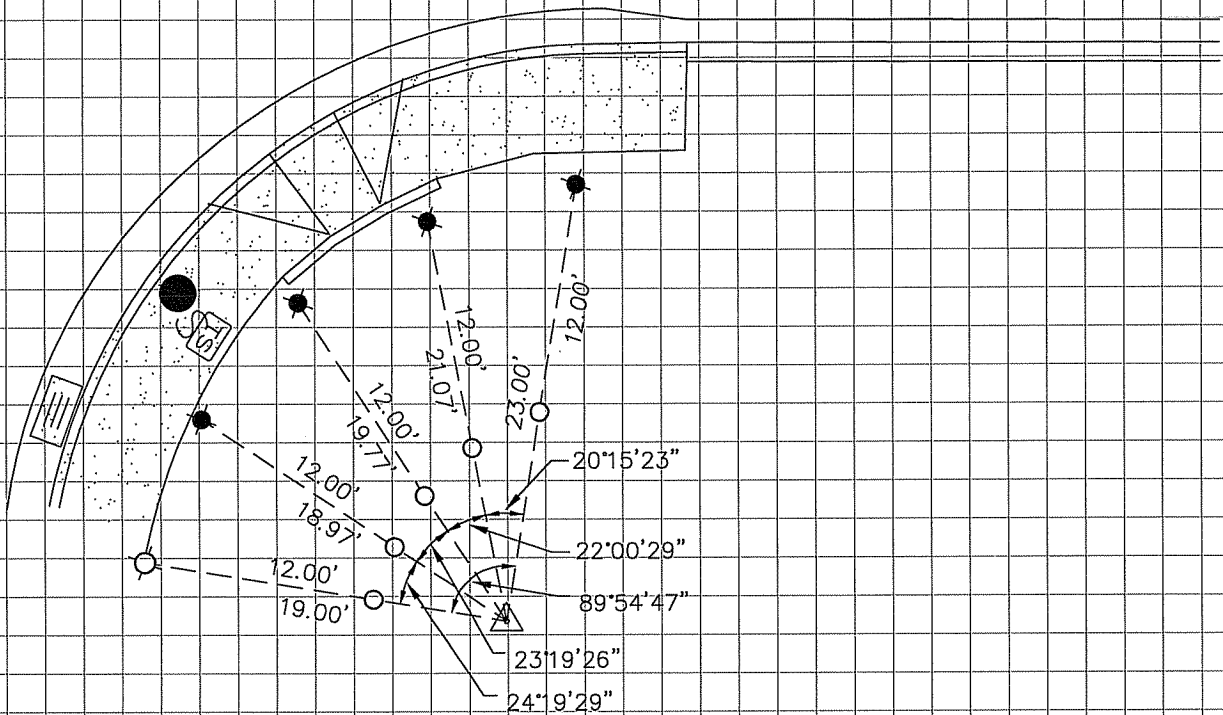
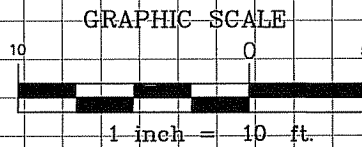
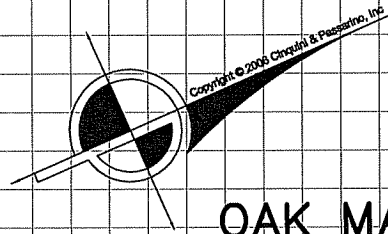
Signed *[Signature]* P.L.S. or R.C.E. No. 7128
Title COUNTY SURVEYOR



County Surveyor's Comments _____

SIR FRANCIS DRAKE BLVD

OAK MANOR DRIVE



LEGEND

- - SET NAIL WITH BRASS TAG, STAMPED "PLS 8614" (RESET TAG AFTER COMPLETION OF CONSTRUCTION)
- - FOUND BRASS TAG, STAMPED "LS 4760" (NOT DISTURBED)
- - SET TEMPORARY MAG NAIL REFERENCE ON 6/20/2012 PRIOR TO REMOVAL DUE TO CONSTRUCTION
- △ - SET MAG NAIL