

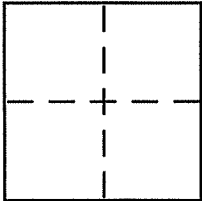
**CORNER RECORD**

Document Number 001-122-26

City of Fairfax

County of Marin, California

Brief Legal Description LANDS OF DERKATCH PER 16 SURVEYS 4



**CORNER TYPE**

Government Corner  Control   
Meander  Property   
Rancho  Other   
Date of Survey 05-22-08

**COORDINATES (Optional)**

N. \_\_\_\_\_  
E. \_\_\_\_\_  
Zone \_\_\_\_\_ NAD27  NAD83   
NAD83 Epoch \_\_\_\_\_  
Elev. \_\_\_\_\_  
Vert. Datum: NGVD29  NAVD88   
Meas. Units: Metric  Imperial

Corner - Left as found  Found and tagged  Established  Reestablished  Rebuilt

Identification and type of corner found: Evidence used to identify or procedure used to establish or reestablish the corner:

See page 2 of 2

A description of the physical condition of the monument as found and as set or reset:

See page 2 of 2

**SURVEYOR'S STATEMENT**

This Corner Record was prepared by me or under my direction in conformance with the Land Surveyor's Act on 7/15 2008

Signed [Signature] P.L.S or R.C.E. No. 6784



**COUNTY SURVEYOR'S STATEMENT**

This Corner Record was received 7-21-2008

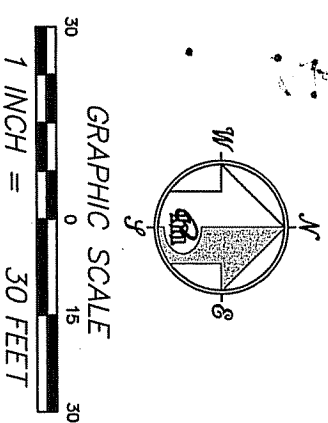
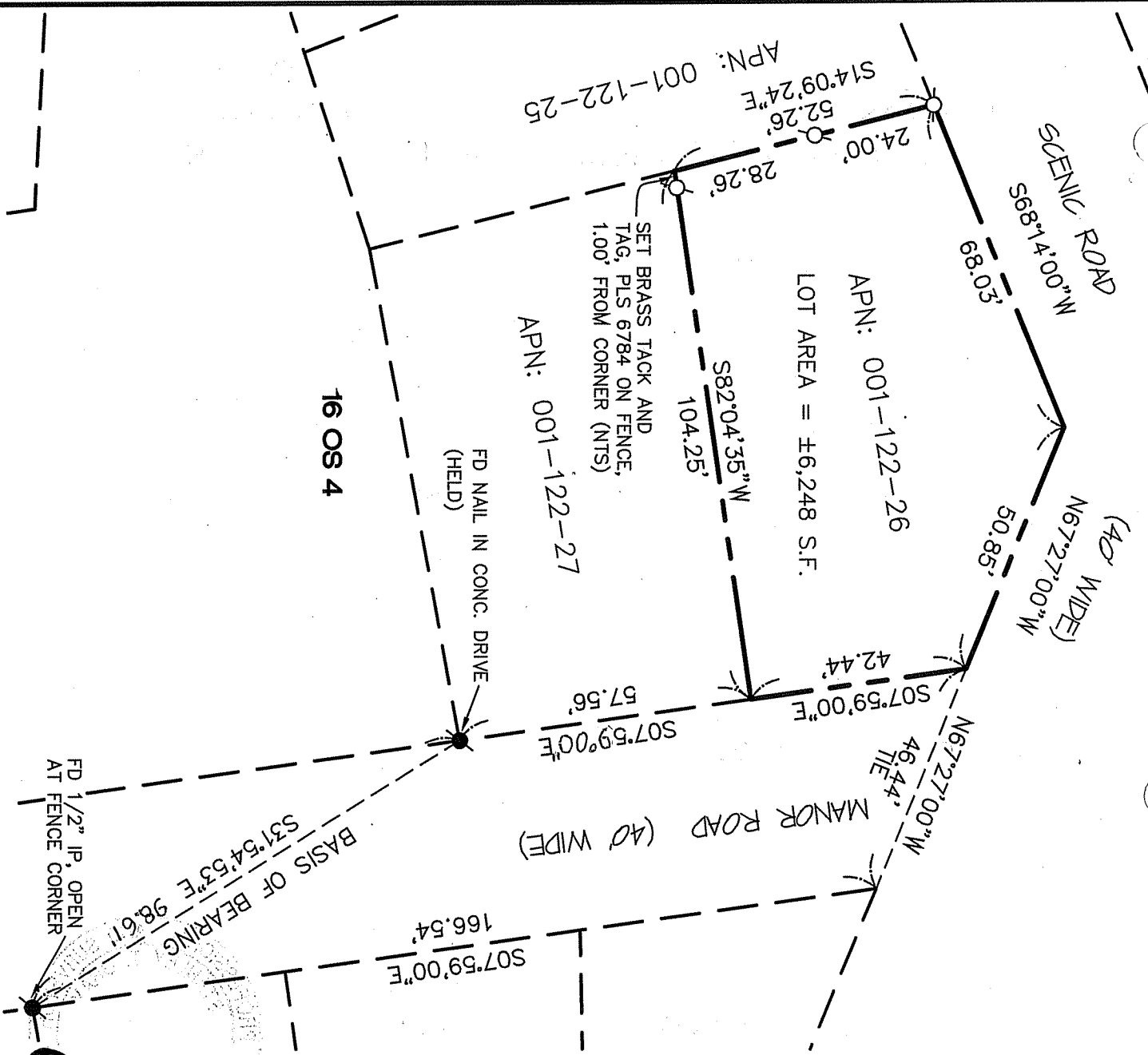
and examined and filed AUGUST 5, 2008

Signed [Signature] P.L.S or R.C.E. No. 30212

Title DEPUTY COUNTY SURVEYOR



County Surveyor's Comment \_\_\_\_\_



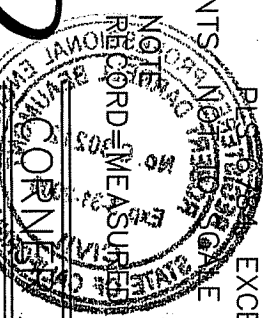
GRAPHIC SCALE

**REFERENCE**

RECORD OF SURVEY, LANDS OF WILLMANN, FAIRFAX, CALIFORNIA FILED FOR RECORD 18 OCTOBER 1979 IN BOOK 16 OF SURVEYS, AT PAGE 4, MARIN COUNTY RECORDS.

**LEGEND**

- FOUND MONUMENT PER [A]
- ⊙ SET 5/8" REBAR WITH CAP, PER [A] EXCEPT AS NOTED
- NTS NO TACK OR TAG



RECORD

**MERIDIAN SURVEYING, INC.**  
 1812 UNION STREET  
 SAN FRANCISCO, CA 94123  
 (415) 440-4131  
 info@meridiansurvey.com  
 08052  
 777 GRAND AVENUE, SUITE 202  
 SAN RAFAEL, CA 94901  
 (415) 466-5450