

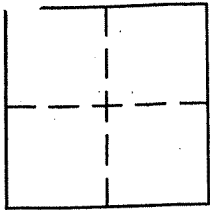
CORNER RECORD

Document Number APN 001-121-74

City of FAIRFAX

County of MARIN, California

Legal Description LOT 9 AND A PORTION OF LOT 10, BLOCK D, 4 RM 53



CORNER TYPE

- Government Corner Control
- Meander Property
- Rancho Other
- Date of Survey _____

COORDINATES (Optional)

N. _____
 E. _____
 Zone _____ NAD27 NAD83
 NAD83 Epoch _____
 Elev. _____
 Vert. Datum: NGVD29 NAVD88
 Meas. Units: Metric Imperial

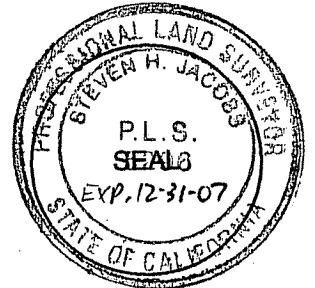
Corner - Left as found Found and tagged Established Reestablished Rebuilt

Identification and type of corner found: Evidence used to identify or procedure used to establish or reestablish the corner:
FOUND MONUMENTS AS SHOWN ON RECORD OF SURVEY FILED IN BOOK 2003 OF MAPS AT PAGE 294 AND ON REVERSE.

A description of the physical condition of the monument as found and as set or reset: SET 3/4" IRON PIPES AS SHOWN ON REVERSE

SURVEYOR'S STATEMENT

This Corner record was prepared by me or under my direction in conformance with the Land Surveyor's Act on JULY 24th, 2007
 Signed [Signature] P.L.S. or R.C.E. No. P.L.S. 5296

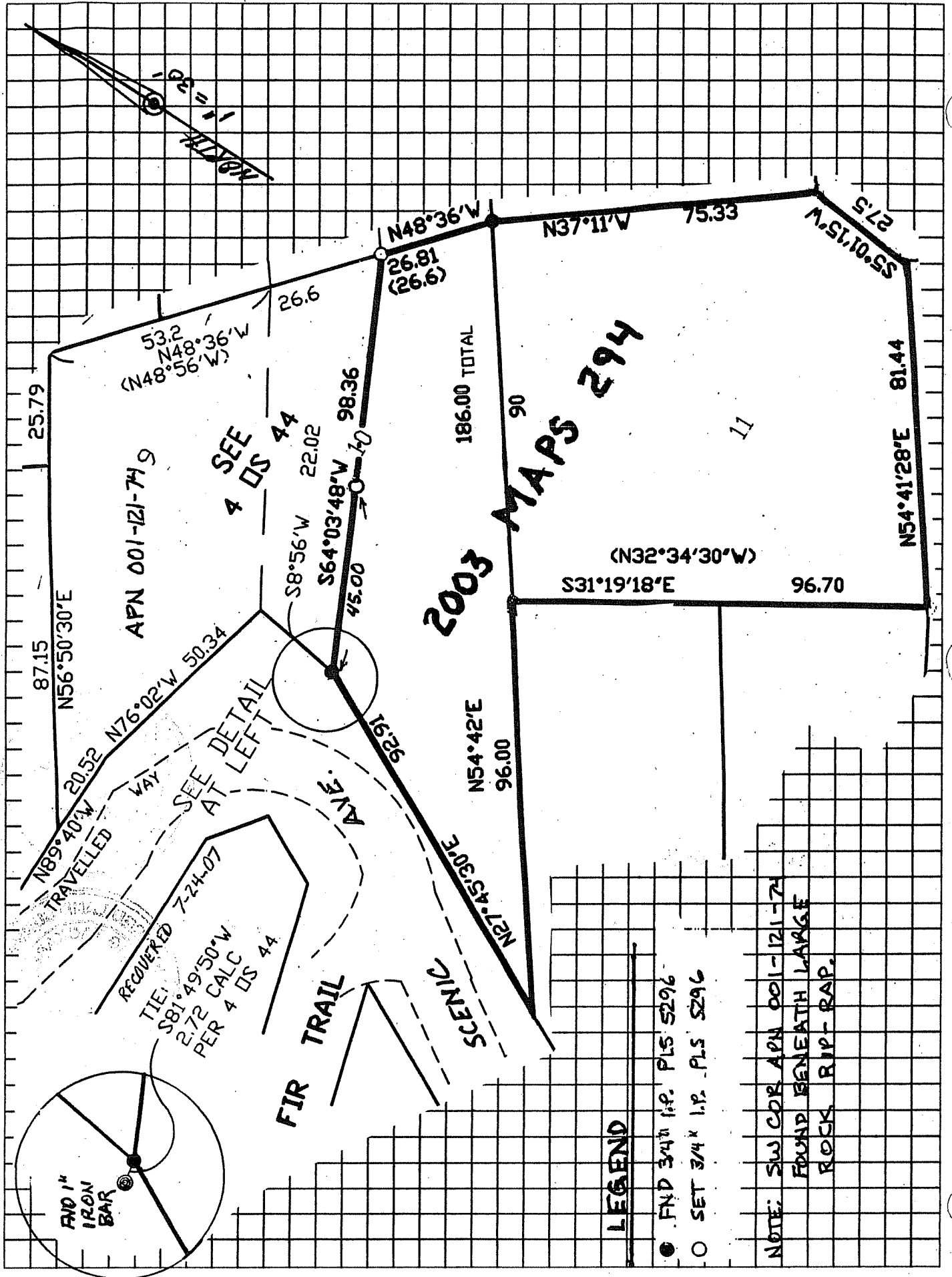


COUNTY SURVEYOR'S STATEMENT

This Corner Record was received AUGUST 15, 2007
 and examined and filed SEPTEMBER 18, 2007
 Signed [Signature] P.L.S. or R.C.E. No. 7128
 Title COUNTY SURVEYOR



County Surveyor's Comment _____



2003 MAPS 294

LEGEND

- FND 3/4" I.P. PLS 5296
- SET 3/4" I.P. PLS 5296

NOTE: SW COR APN 001-121-744
FOUND BENEATH LARGE
ROCK RIP-RAP.