



JERRICO ASSOCIATES
 SUITE 27
 77 MARK DRIVE
 SAN RAFAEL, CA 94903

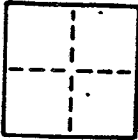
A.P. # 1-113-04

6724
 see 6704

CORNER RECORD

1/4

COUNTY OF Marin T. _____ R. _____ MERIDIAN _____ CALIFORNIA
 CORNER TYPE: GOVT. CORNER MEANDER RANCHO CONTROL OTHER
 CORNER IDENTIFICATION — DATE OF VISIT _____ 19__



CORNER — LEFT AS FOUND FOUND AND TAGGED REESTABLISHED OBLITERATED CORNER RESULT

PHYSICAL DESCRIPTION OF CORNER FOUND; EVIDENCE AND METHOD USED TO IDENTIFY OR REESTABLISH

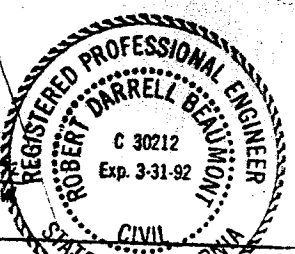
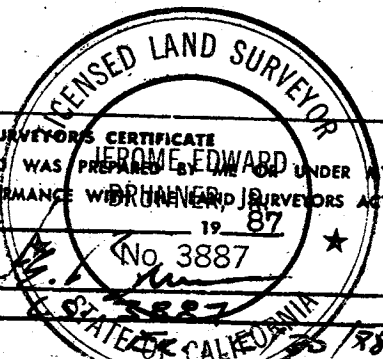
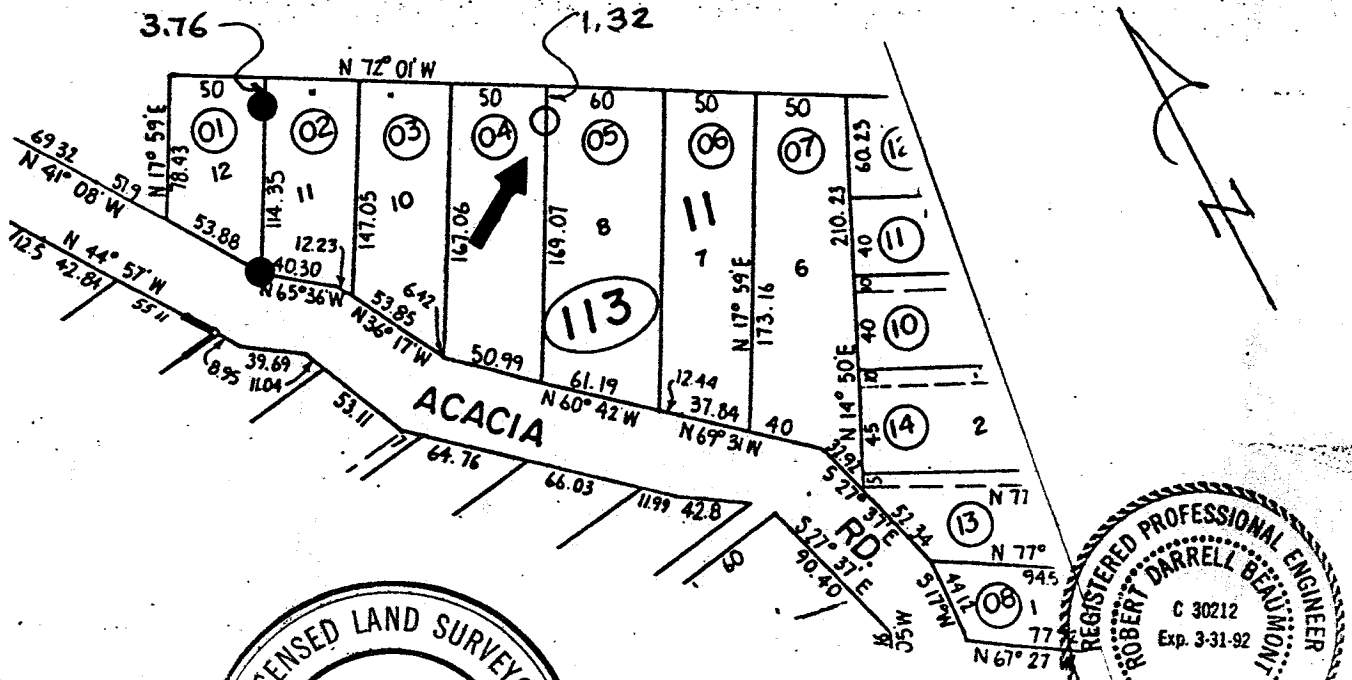
● Fd. rebar and cap L.S. 3887 per. Corner Record filed 10-06-87

PHYSICAL DESCRIPTION OF MONUMENTS, RESULT OR PERPETUATED

○ Set nail and tag L.S. 3887 in top of fence.

CALIFORNIA COORDINATE SYSTEM ORDER: FIRST SECOND THIRD
 STATIONS USED: NGS (USC & GS) STATE COUNTY OTHER STATION _____ STATION _____
 ZONE _____ ELEVATION _____ NORTHINGS (N) _____ EASTINGS (E) _____

SKETCH: (Include reference tie or witness points, remarks and top of area)



SURVEYOR'S CERTIFICATE
 THIS CORNER RECORD WAS PREPARED BY JEROME EDWARD BRUNNER UNDER MY DIRECTION IN CONFORMANCE WITH THE SURVEYORS ACT ON Nov. 19 87
 SIGNED: [Signature]
 L.S. or R.C.E. No. 3887

COUNTY SURVEYOR'S CERTIFICATE
 THE CORNER RECORD WAS RECEIVED AND EXAMINED AND FILED 5/25 19 88
 BY: [Signature]
 TITLE: [Signature]

DOCUMENT No. _____
 STATEMENT ON BACK OF SHEET



JERRICO ASSOCIATES
 SUITE 27
 77 MARK DRIVE
 SAN RAFAEL, CA 94903

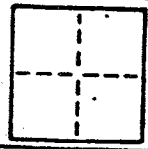
1-113-04

6724
 see 6704

CORNER RECORD

2/4

COUNTY OF Marin T. _____ R. _____ MERIDIAN _____ CALIFORNIA
 CORNER TYPE: GOVT. CORNER MEANDER RANCHO CONTROL OTHER
 CORNER IDENTIFICATION — DATE OF VISIT _____ 19____



CORNER — LEFT AS FOUND FOUND AND TAGGED REESTABLISHED OBLITERATED CORNER REBUILT

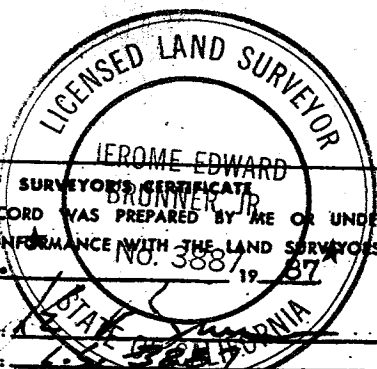
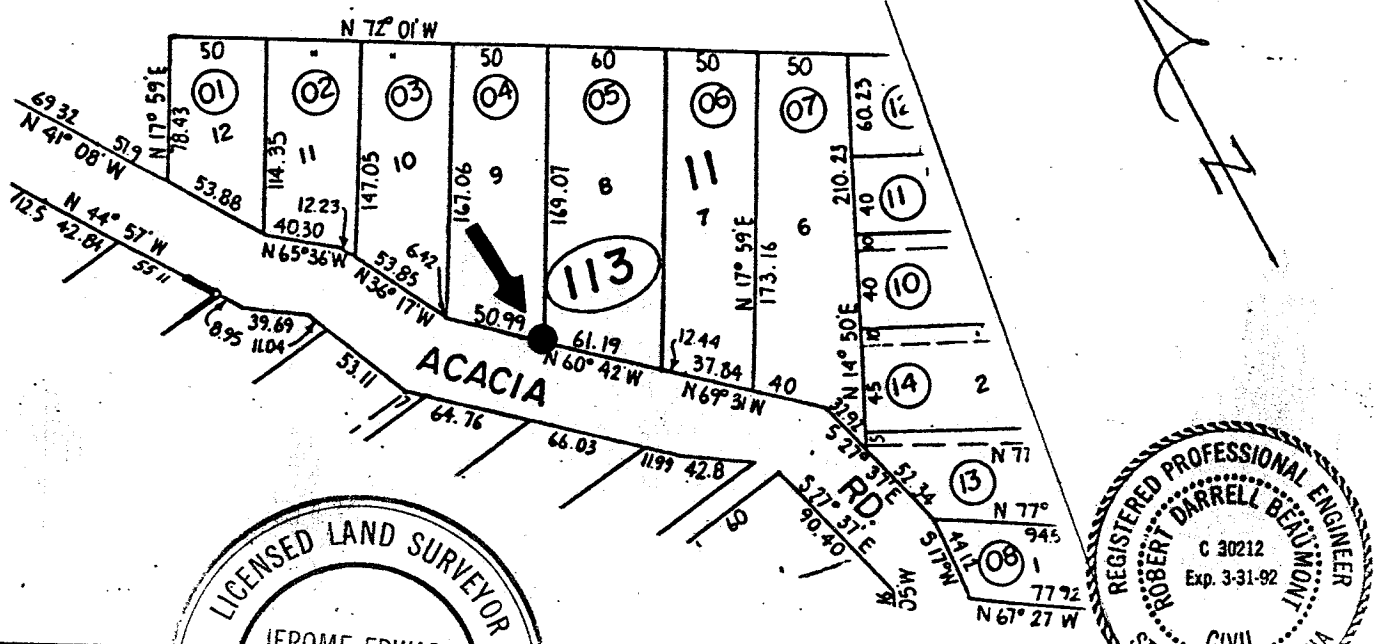
PHYSICAL DESCRIPTION OF CORNER FOUND; EVIDENCE AND METHOD USED TO IDENTIFY OR REESTABLISH
Fd. rebar and cap L.S. 3887 per. Corner Record filed 10-06-87

PHYSICAL DESCRIPTION OF MONUMENTS REBUILT OR PERPETUATED

● **Set nail and tag L.S. 3887 in face of power pole 0.13 westerly of corner.**

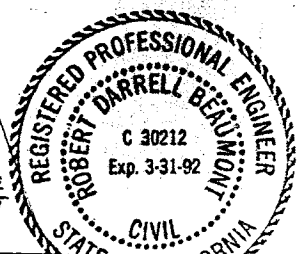
CALIFORNIA COORDINATE SYSTEM ORDER: FIRST SECOND THIRD
 STATIONS USED: NGS (USC & GS) STATE COUNTY OTHER STATION _____ STATION _____
 ZONE _____ ELEVATION _____ NORTHINGS (Y) _____ EASTINGS (X) _____

SKETCH: (Include reference tie or witness points, remarks and topo of area)



THIS CORNER RECORD WAS PREPARED BY ME OR UNDER MY DIRECTION IN CONFORMANCE WITH THE LAND SURVEYORS ACT ON Nov 19 87 NO. 3887

SIGNED: _____
 L.S. or R.C.E. No.: _____
11/30/88



COUNTY SURVEYOR'S CERTIFICATE
 THE CORNER RECORD WAS RECEIVED 5/25 1988
 AND EXAMINED AND FILED 5/25 1988
 BY: [Signature]
 TITLE: [Signature]

DOCUMENT No. _____
 STATEMENT ON BACK OF SHEET



JERRICO ASSOCIATES
 SUITE 27
 77 MARK DRIVE
 SAN RAFAEL, CA 94903

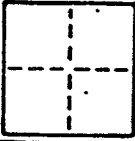
1-113-04

6724
 see 6704

CORNER RECORD

3/4

COUNTY OF Marin T. _____ R. _____ MERIDIAN _____ CALIFORNIA
 CORNER TYPE: GOVT. CORNER MEANDER RANCHO CONTROL OTHER
 CORNER IDENTIFICATION — DATE OF VISIT _____ 19____



CORNER — LEFT AS FOUND FOUND AND TAGGED REESTABLISHED OBLITERATED CORNER RESULT

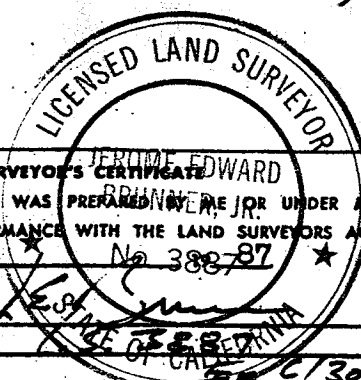
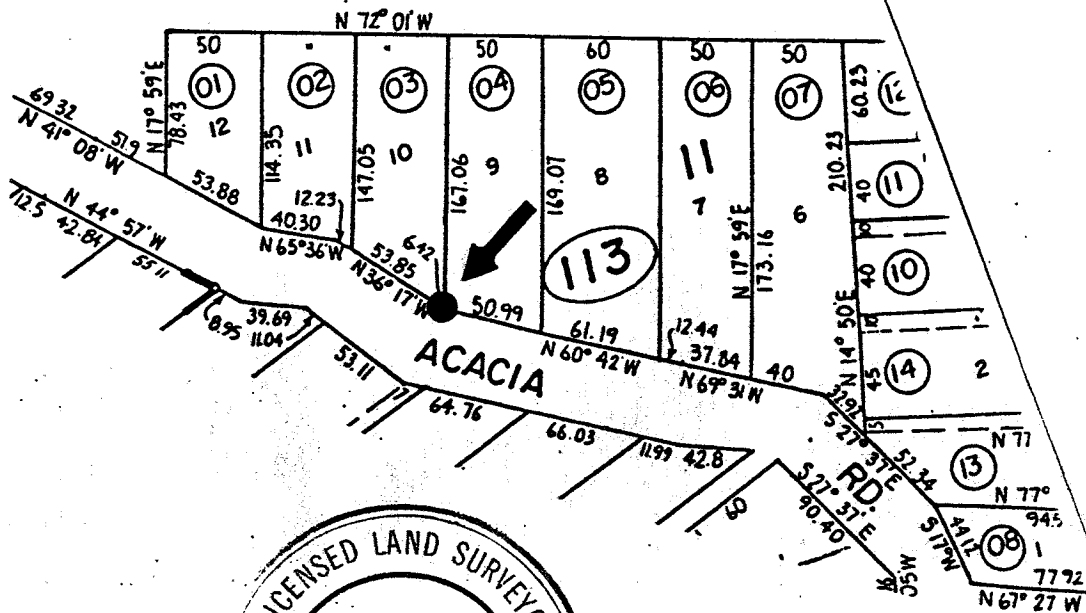
PHYSICAL DESCRIPTION OF CORNER FOUND; EVIDENCE AND METHOD USED TO IDENTIFY OR REESTABLISH
Fd. rebar and cap L.S. 3887 per. Corner Record filed 10-06-87

PHYSICAL DESCRIPTION OF MONUMENTS RESULT OR PERPETUATED

Set rebar and cap L.S. 3887

CALIFORNIA COORDINATE SYSTEM ORDER: FIRST SECOND THIRD
 STATIONS USED: NGS (USC & GS) STATE COUNTY OTHER STATION _____ STATION _____
 ZONE _____ ELEVATION _____ NORTHINGS (Y) _____ EASTINGS (X) _____

SKETCH: (Include reference tie or witness points, remarks and topo of area)



SURVEYOR'S CERTIFICATE
 THIS CORNER RECORD WAS PREPARED BY ME OR UNDER MY DIRECTION IN CONFORMANCE WITH THE LAND SURVEYORS ACT ON NOV. 30, 1987
 SIGNED: Jerome Edward Brunner
 L.S. or R.C.E. No. 3887

COUNTY SURVEYOR'S CERTIFICATE
 THE CORNER RECORD WAS RECEIVED 5/24 1988
 AND EXAMINED AND FILED 5/25 1988
 BY: [Signature]
 TITLE: Deputy

DOCUMENT No. _____
 STATEMENT ON BACK OF SHEET YES NO



JERRICO ASSOCIATES
 SUITE 27
 77 MARK DRIVE
 SAN RAFAEL, CA 94903

1-113-04

6724
 see 6704

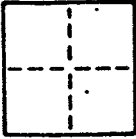
CORNER RECORD

4/4

COUNTY OF Marin T. _____ R. _____ MERIDIAN CALIFORNIA

CORNER TYPE: GOVT. CORNER MEANDER RANCHO CONTROL OTHER

CORNER IDENTIFICATION — DATE OF VISIT _____ 19____



CORNER — LEFT AS FOUND FOUND AND TAGGED REESTABLISHED OBLITERATED CORNER REBUILT

PHYSICAL DESCRIPTION OF CORNER FOUND; EVIDENCE AND METHOD USED TO IDENTIFY OR REESTABLISH

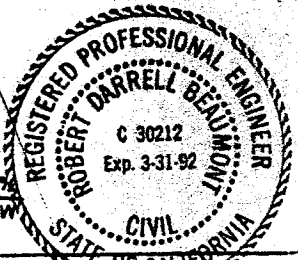
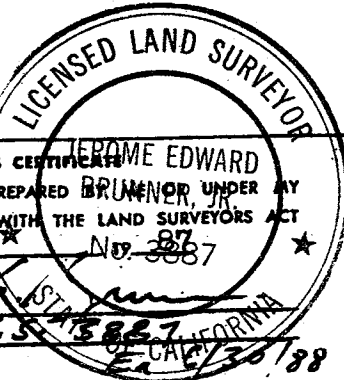
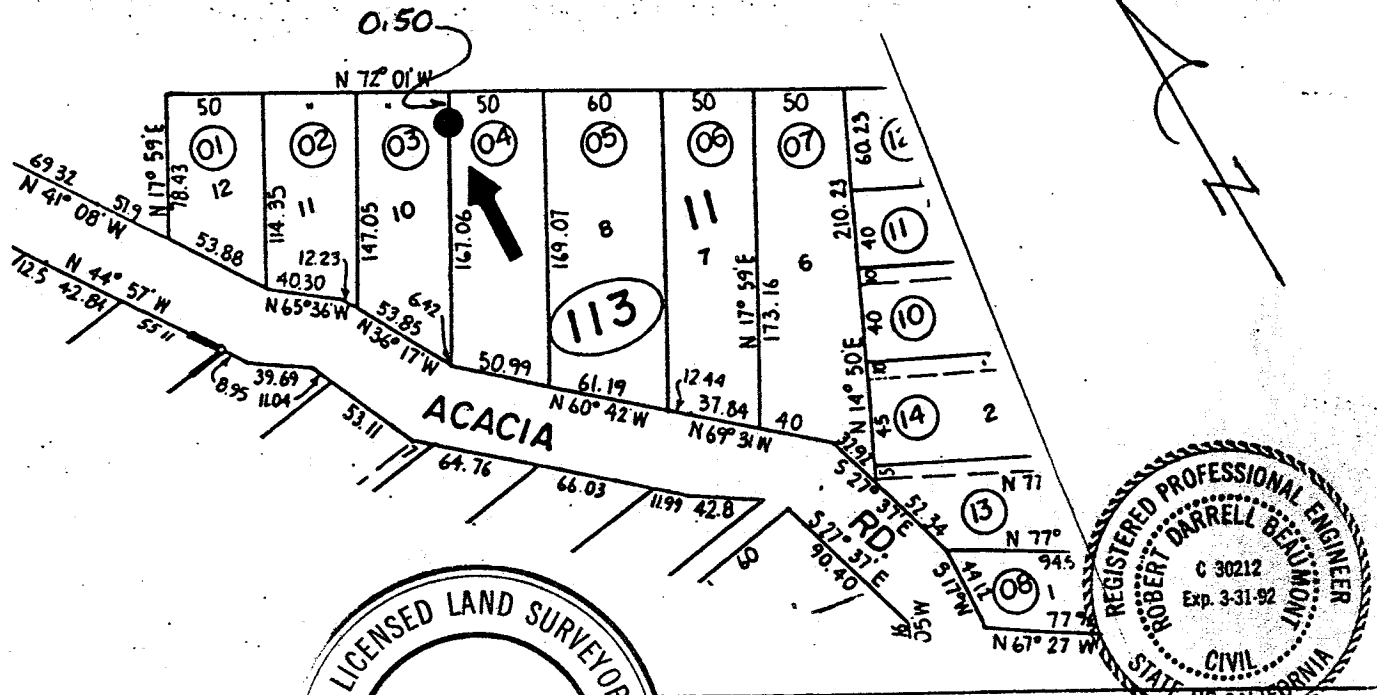
Fd. rebar and cap L.S. 3887 per. Corner Record filed 10-06-87

PHYSICAL DESCRIPTION OF MONUMENTS REBUILT OR PERPETUATED

Set nail and tag L.S. 3887 in top of fence.

CALIFORNIA COORDINATE SYSTEM ORDER: FIRST SECOND THIRD
 STATIONS USED: NGS (USC & GS) STATE COUNTY OTHER STATION _____ STATION _____
 ZONE _____ ELEVATION _____ NORTHINGS (Y) _____ EASTINGS (X) _____

SKETCH: (Include reference tie or witness points, remarks and topo of area)



SURVEYOR'S CERTIFICATE
 THIS CORNER RECORD WAS PREPARED BY BRUNNER, JR. UNDER MY
 DIRECTION IN CONFORMANCE WITH THE LAND SURVEYORS ACT
 ON NOV. 1987

SIGNED: _____
 L.S. or R.C.E. No.: L.S. 3887

COUNTY SURVEYOR'S CERTIFICATE
 THE CORNER RECORD WAS RECEIVED 5/24/88
 AND EXAMINED AND FILED 5/25/88
 BY: RDB
 TITLE: RECORD

DOCUMENT No. _____
 STATEMENT ON BACK OF SHEET YES NO