



JERRICO ASSOCIATES
 SUITE 27
 77 MARK DRIVE
 SAN RAFAEL, CA 94903

A.P. # 1-113-03

6704

CORNER RECORD

1/3

COUNTY OF Marin T. _____ R. _____ MERIDIAN _____ CALIFORNIA

CORNER TYPE: GOVT. CORNER MEANDER RANCHO CONTROL OTHER

CORNER IDENTIFICATION — DATE OF VISIT _____ 19____



CORNER — LEFT AS FOUND FOUND AND TAGGED REESTABLISHED OBLITERATED CORNER REBUILT

PHYSICAL DESCRIPTION OF CORNER FOUND; EVIDENCE AND METHOD USED TO IDENTIFY OR REESTABLISH:

- Found pipe and L.S. 3887. ○ Previously set Pipe and L.S. 3887
 - Previously set L.S. 3887 in top of fence.
- Retracement of control points on Acacia Road for Lot 12
 Block 11, Amended map of Fairfax Manor, 5 R.M. 4
 Lot 10/11 and, 12 as reference.

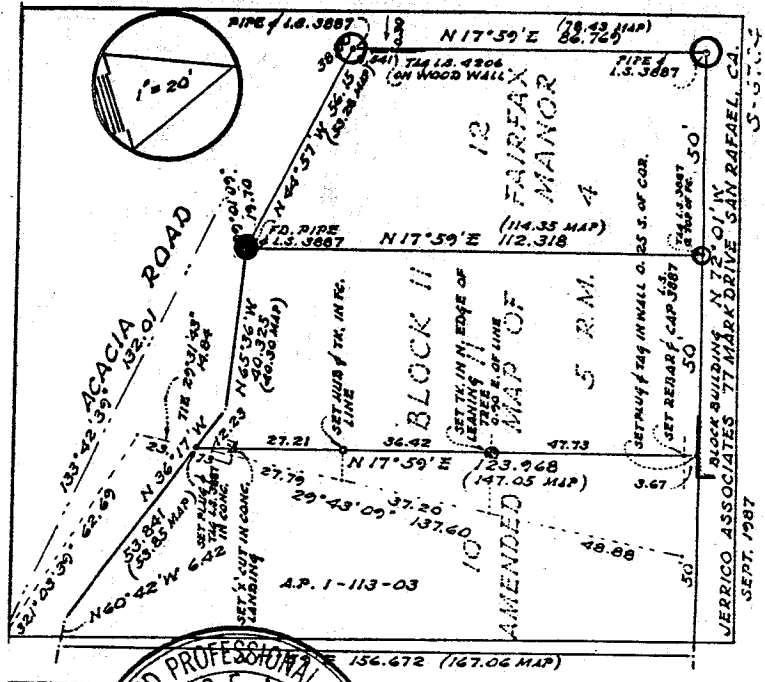
PHYSICAL DESCRIPTION OF MONUMENTS, REBUILT OR PERPETUATED:

CALIFORNIA COORDINATE SYSTEM ORDER: FIRST SECOND THIRD

STATIONS USED: NGS (USC & GS) STATE COUNTY OTHER STATION _____ STATION _____

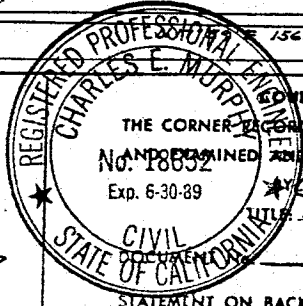
ZONE _____ ELEVATION _____ NORTHINGS (Y) _____ EASTINGS (X) _____

SKETCH: (Include reference tie or witness points, remarks and topo of area)



SURVEYOR'S CERTIFICATE
 THIS CORNER RECORD WAS PREPARED BY ME OR UNDER MY DIRECTION IN CONFORMANCE WITH THE LAND SURVEYORS ACT ON September 28, 1987

SIGNED: _____
 L.S. or R.C.E. No. _____



COUNTY SURVEYOR'S CERTIFICATE
 THE CORNER RECORD WAS RECEIVED 10-1-87 1987
 AND EXAMINED AND FILED 1096 1987
 Exp. 6-30-89

 Acting County Surveyor

STATEMENT ON BACK OF SHEET

YES NO



JERRICO ASSOCIATES
 SUITE 27
 77 MARK DRIVE
 SAN RAFAEL, CA 94903

1-113-03

6704

CORNER RECORD

2/3

COUNTY OF Marin T. _____ R. _____ MERIDIAN _____ CALIFORNIA

CORNER TYPE: GOVT. CORNER MEANDER RANCHO CONTROL OTHER

CORNER IDENTIFICATION — DATE OF VISIT _____ 19__



CORNER — LEFT AS FOUND FOUND AND TAGGED REESTABLISHED OBLITERATED CORNER REBUILT

PHYSICAL DESCRIPTION OF CORNER FOUND; EVIDENCE AND METHOD USED TO IDENTIFY OR REESTABLISH

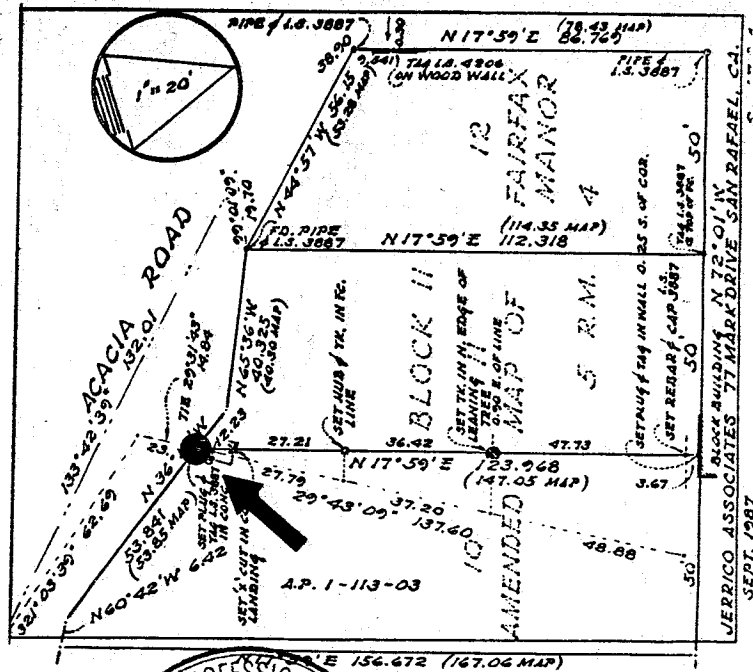
Found pipe and L.S. 3887. Previously set Pipe and L.S. 3887
 Previously set L.S. 3887 in top of fence.
 Retracement of control points on Acacia Road for Lot 12
 Block 11, Amended map of Fairfax Manor, 5 R.M. 4
 Lot 10/11 and, 12 as reference.

PHYSICAL DESCRIPTION OF MONUMENTS, REBUILT OR PERPETUATED

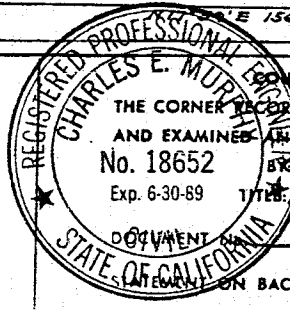
● Set plug and tag L.S. 3887 in concrete landing.

CALIFORNIA COORDINATE SYSTEM ORDER: FIRST SECOND THIRD
 STATIONS USED: NGS (USC & GS) STATE COUNTY OTHER STATION _____ STATION _____
 ZONE _____ ELEVATION _____ NORTHINGS (Y) _____ EASTINGS (X) _____

SKETCH: (Include reference tie or witness points, remarks and topo of area)



SURVEYOR'S CERTIFICATE
 THIS CORNER RECORD WAS PREPARED BY ME OR UNDER MY DIRECTION IN CONFORMANCE WITH THE SURVEYORS ACT ON September 28 19 87
 No. 3887
 SIGNED: _____
 L.S. or R.C.E. No. _____



COUNTY SURVEYOR'S CERTIFICATE
 THE CORNER RECORD WAS RECEIVED 10-1 19 87
 AND EXAMINED AND FILED 10-6 19 87
 No. 18652 BY Charles E. Murphy
 Exp. 6-30-89 TITLE Acting County Surveyor

DOCUMENT NO. _____
 CHECK _____ ON BACK OF SHEET YES NO



JERRICO ASSOCIATES

SUITE 27
77 MARK DRIVE
SAN RAFAEL, CA 94903

1-113-03

6704

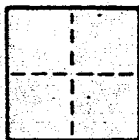
CORNER RECORD

3/3

COUNTY OF Marin T. _____ R. _____ MERIDIAN _____ CALIFORNIA

CORNER TYPE: GOVT. CORNER MEANDER RANCHO CONTROL OTHER

CORNER IDENTIFICATION — DATE OF VISIT _____ 19____



CORNER — LEFT AS FOUND FOUND AND TAGGED REESTABLISHED OBLITERATED CORNER RESULT

PHYSICAL DESCRIPTION OF CORNER FOUND, EVIDENCE AND METHOD USED TO IDENTIFY OR REESTABLISH

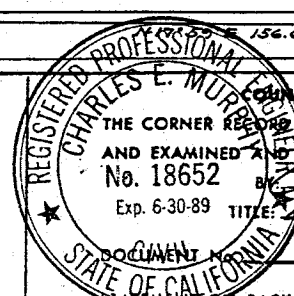
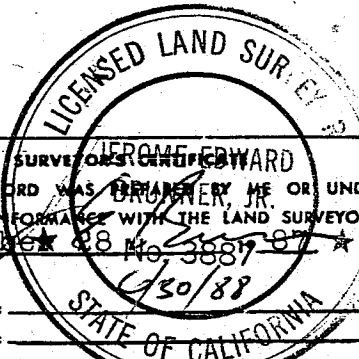
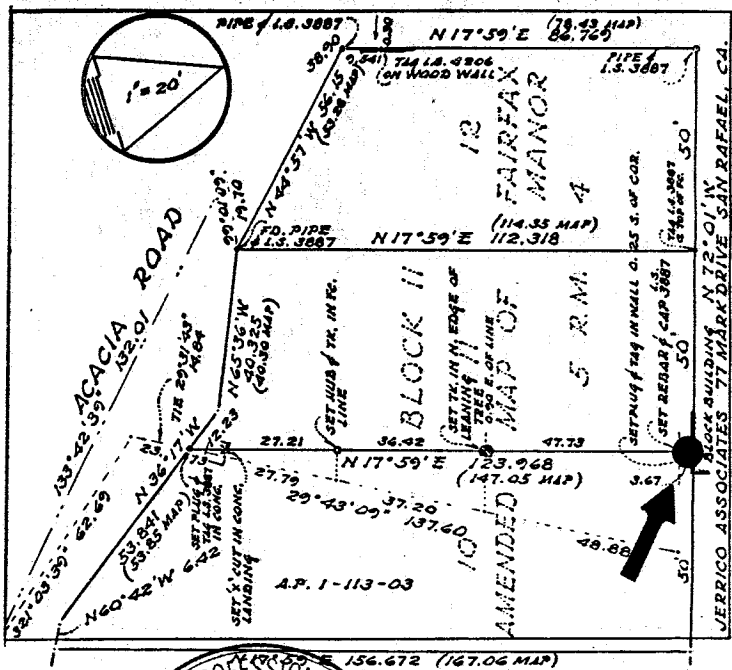
Found pipe and L.S. 3887. Previously set Pipe and L.S. 3887
Previously set L.S. 3887 in top of fence.
Retracement of control points on Acacia Road for Lot 12
Block 11, Amended map of Fairfax Manor, 5 R.M. 4
Lot 10/11 and, 12 as reference.

PHYSICAL DESCRIPTION OF MONUMENTS RESULT OR PERPETUATED

● Set plug and tag L.S. 3887 in block wall 0.25 southerly of corner

CALIFORNIA COORDINATE SYSTEM ORDER: FIRST SECOND THIRD
STATIONS USED: NGS (USC & GS) STATE COUNTY OTHER STATION _____ STATION _____
ZONE _____ ELEVATION _____ NORTHINGS (Y) _____ EASTINGS (X) _____

SKETCH: (Include reference tie or witness points, remarks and topo of area)



THIS CORNER RECORD WAS PREPARED BY ME OR UNDER MY DIRECTION IN CONFORMANCE WITH THE LAND SURVEYORS ACT ON September 28 No. 3887-87

SIGNED: _____
L.S. or R.C.E. No.: _____

COUNTY SURVEYOR'S CERTIFICATE
THE CORNER RECORD WAS RECEIVED 10-1 1987
AND EXAMINED AND FILED 10-6 1987
No. 18652
Exp. 6-30-89
TITLE: Acting County Surveyor